



# Persian dance no. 6

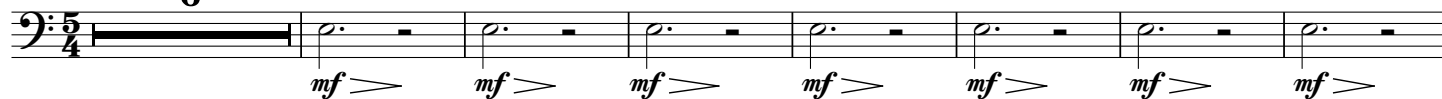
Tuba in B $\flat$  BC

Amir MOLOOKPOUR

Allegro ma non tanto  $\text{♩} = 168$

**A**

6



**B**



poco rit. **C** A tempo



**D**



**E**

$\text{♩} = \text{♩}$

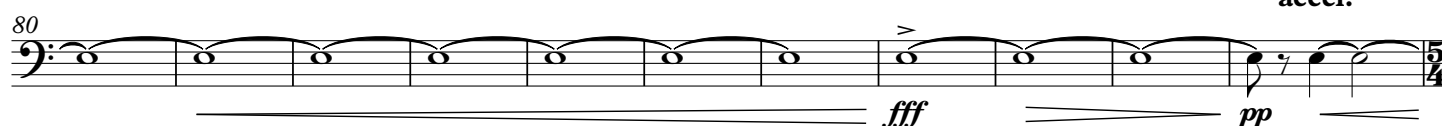
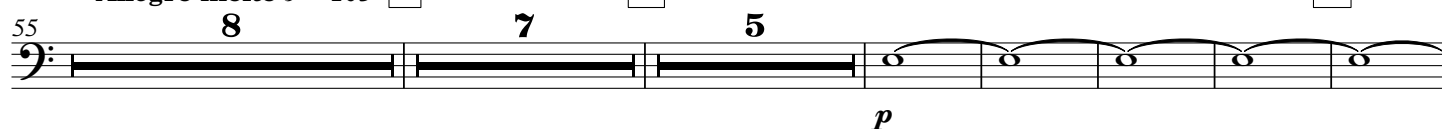


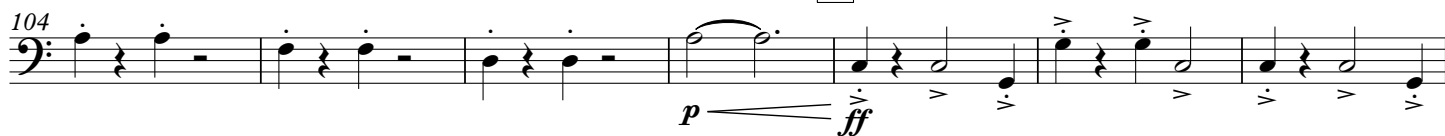
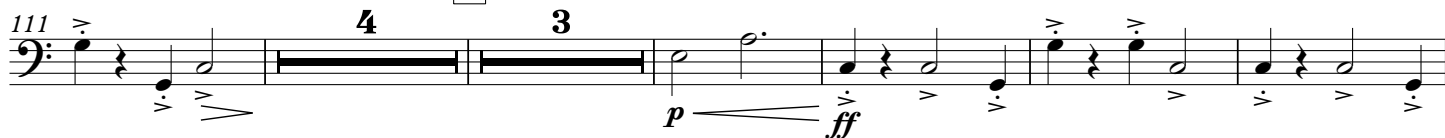
Allegro molto  $\text{♩} = 105$

**F**

**G**

**H**



Tuba in B $\flat$  BC**I** Presto ♩ = 220**J****K****L****M**

accel.

**N** Più mosso ♩ = 230**O****P****Q**