

Persian dance no. 6

Tuba in E \flat BC

Amir MOLOOKPOUR

Allegro ma non tanto $\text{♩} = 168$

A



B



poco rit. C A tempo



D



E $\text{♩} = \text{♩}$

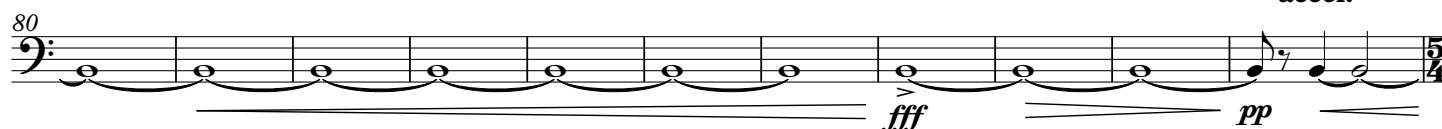
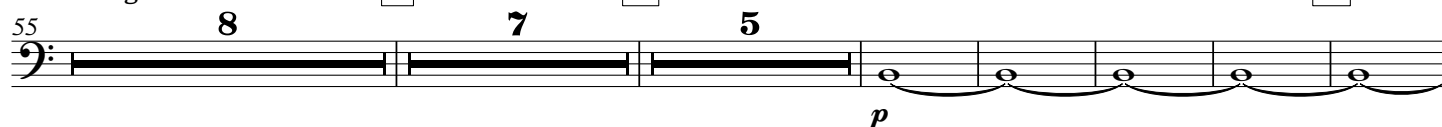


Allegro molto $\text{♩} = 105$

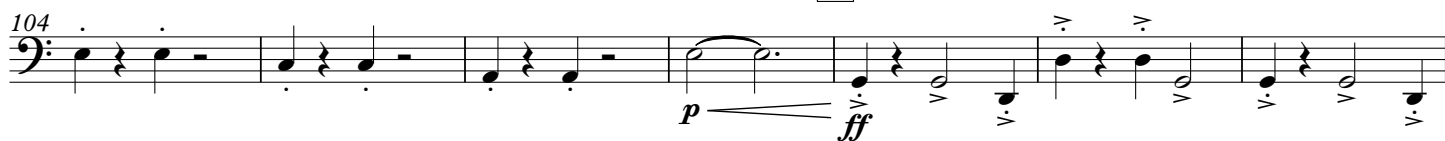
F

G

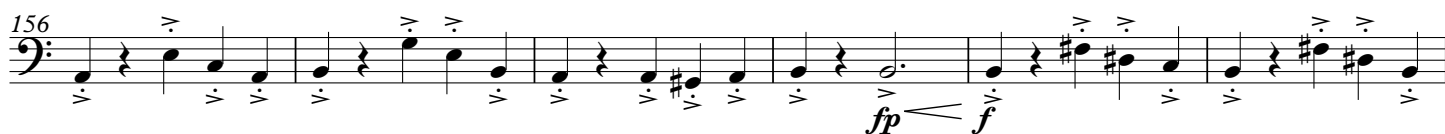
H



Tuba in E♭ BC

I Presto ♩ = 220**J****K****L****M**

accel.

**N** Più mosso ♩ = 230**O****P****Q**

rit.

