



# Persian dance no. 6

Tuba in E $\flat$

Amir MOLOOKPOUR

Allegro ma non tanto  $\text{♩} = 168$

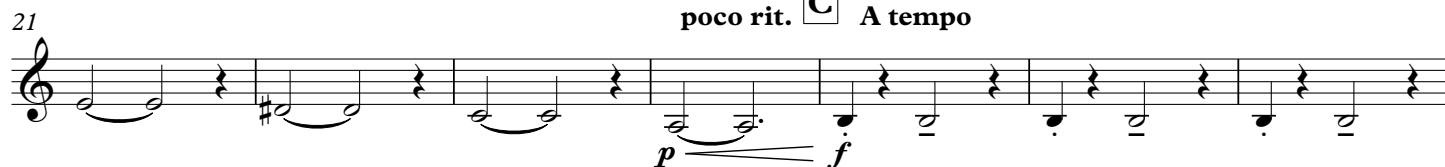
A



B



poco rit. C A tempo



D



E  $\text{♩} = \text{♩}$

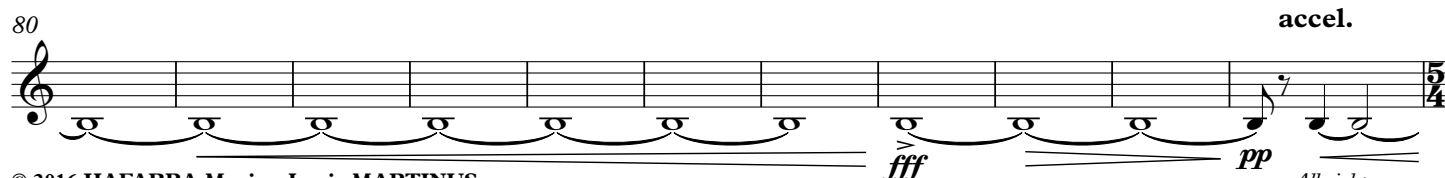
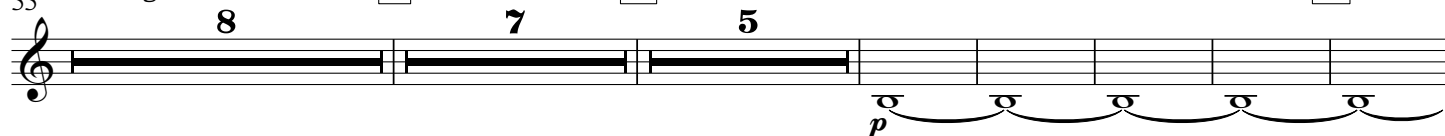


Allegro molto  $\text{♩} = 105$

F

G

H



Tuba in E $\flat$ 

91 **I** Presto ♩ = 220 **J**

104 **K**

111 **L**

123 **M** accel.

136 **N** Più mosso ♩ = 230

143 **O**

150 **P**

156 **Q**

162

168

172 rit.

6/4 5/4

Detailed description of the musical score: The score is for a Tuba in E-flat part. It begins at measure 91 with a forte (f) dynamic and a half note. A 7-measure rest follows. The tempo is marked Presto with a quarter note equal to 220. The key signature has one flat (E-flat). Measures 104-111 show a crescendo from piano (p) to fortissimo (ff). Measure 111 has a 4-measure rest followed by a 3-measure rest. Measure 123 has a 7-measure rest and an acceleration (accel.) marking. Measure 136 changes the tempo to Più mosso with a quarter note equal to 230. Measures 143-150 show a crescendo from piano (p) to forte (f). Measures 156-162 show a crescendo from fortissimo (ff) to fortissimo (f). Measure 168 has a fortissimo (fff) dynamic. The piece ends at measure 172 with a ritardando (rit.) marking and a key signature change to one sharp (F#), indicated by the 6/4 and 5/4 time signatures.