

Dedicated to Louis MARTINUS & Hardy MERTENS

# MUTATIONS

**B $\flat$  Baritone**

(THE SURVIVAL OF THE FITTEST)

Bart PICQUEUR

**Lento**  $\text{♩} = 66$

4 7 13 8 21 7 29 3

32 *mf* *f* *mf* *ff*

39

46 49 11

60 10 70 **Allegro**  $\text{♩} = 144$  84 9

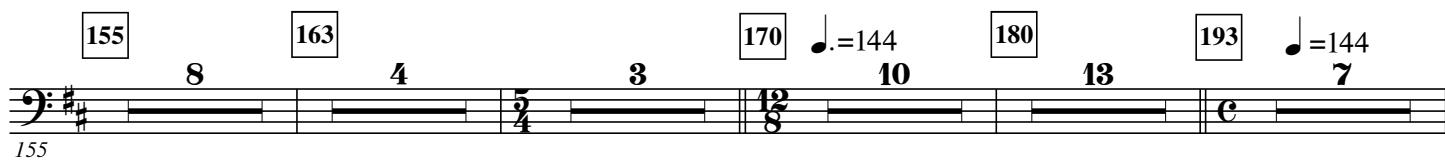
66 *ff*

94 3 2 2 99 *mp*

102

107 109 7 117 14 2

133



213



217

223

229

3 3 3 3 3 3 3 3

4

237

243

237

*ff*

The image shows a musical score for the bass line of 'The Rose Tree'. The key signature is one sharp (F#), and the time signature is 3/4. The score is divided into two measures, 237 and 243. Measure 237 starts with a bass clef and a forte (ff) dynamic marking. The melody consists of a series of eighth and quarter notes, with a half note at the end. Measure 243 continues the melody with similar note values and a half note at the end.

244

253

251

259

The image shows a single staff of music in bass clef, with a key signature of one sharp (F#). The melody begins on a G2 note, moves to A2, then B2, and continues with a series of eighth and quarter notes. A slur covers a sequence of notes: G2, F#2, E2, D2, C2, B1, A1, and G1. The piece concludes with a final G2 note and a double bar line.