

Réminiscence diabolique

B \flat Trombone 2

Alexandre KOSMICKI

♩ = 60 11 13 ♩ = 72 Tristamente poco rit. 21 a tempo e animando poco a tempo ♩ = 72 3

32 36 3 ♩ = 110 Inquieto 2 2 2 *ff*

45 Straight mute *f* *f* *mf*

52 55 Open 7 *f* *ff*

64 65 *f* *mf* *ff* *f*

70 *mf*

76 76 Straight mute 2 *f* *f* *mf*

84 84 Open 3 Flatt. 90 *mf* *f* *mf* *f* *mf*

92 96 13 *f* *mf* *f* *ff*

109 *mp* *f* *esasperato*

119 *ff* *f*

123

126 *ff* *f* *ff* 11

127 133 137

148 154

157 *f* *mf* *mf* *p*

160

172

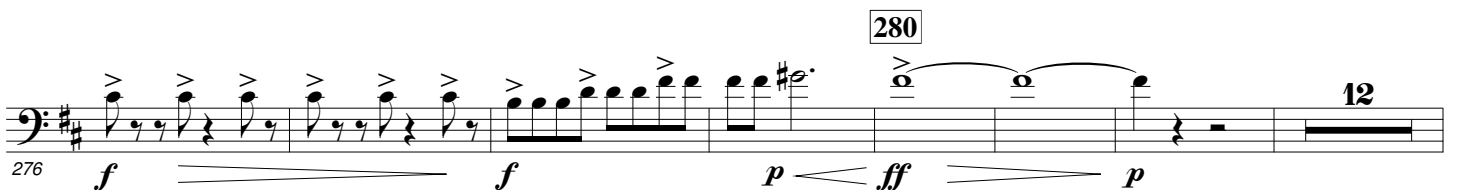
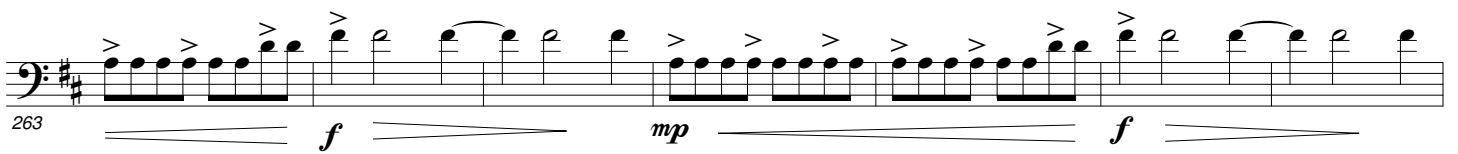
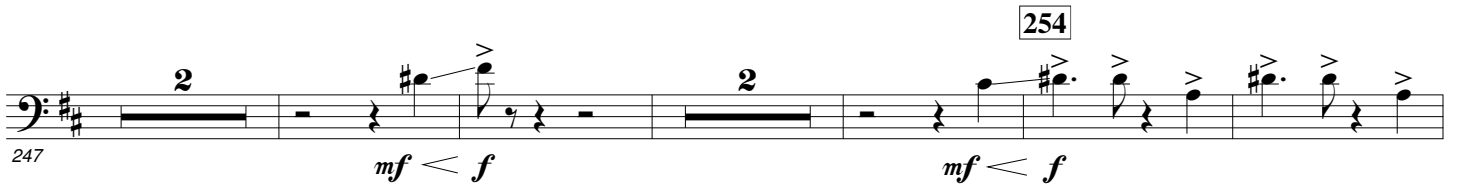
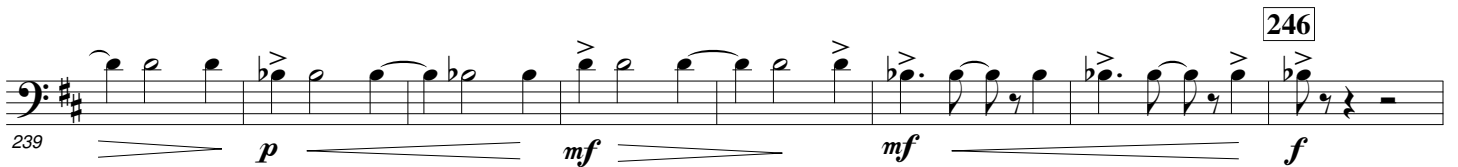
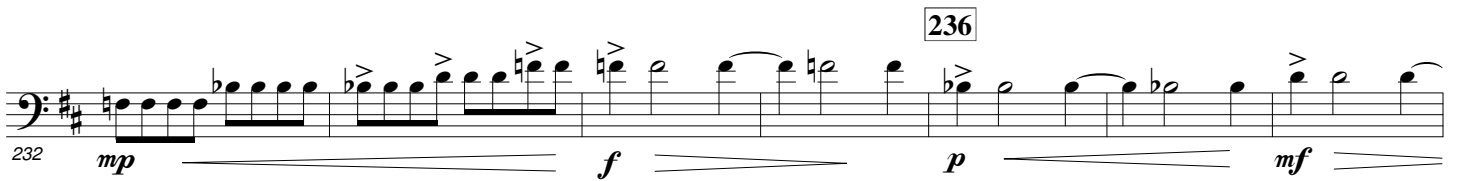
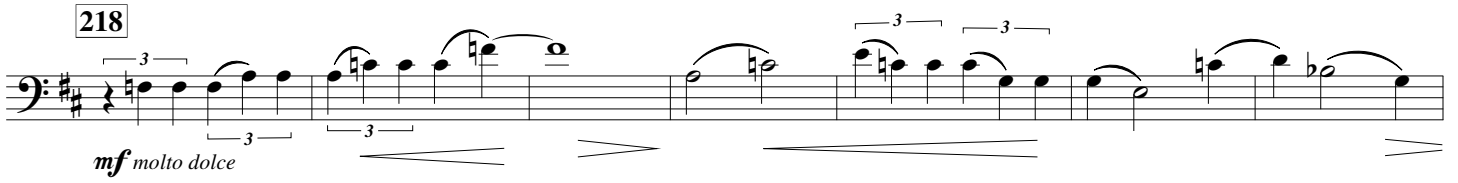
176 *mf* *f*

180

181

184

188 192 208 *ff* *p* *mf* *molto dolce*



295 *p* *ff* *p* *mf* Straight mute

300 2

306 *mf* *f* Open

313

314 9 8 *f* *mf* 3 3 3

323 342 *mf* *f* 3 3 3

336

345 *f* *f* *ff* *pp* *<*

350

353 *ff* *p* *f* *ff* *mf* 3

355 8 364

367 *ff* *mf* *mf* 3 3 3 6

380 *mf* *ff* 2

387 *ff* *p* *f* *f* *poco rit.* *f* *p* 2

394

404 Pesante (♩ = 90) 2 4 4 *f* *f*

397

412 **4** **3** **f** **f** **420** **7** **427** **f pesante** **mf**

429

436 **f** **3** **440** $\text{♩} = 110$ **7** **f** **mf** **449** **4** **453** **4**

457 **ff** **458** **8** **466** **8** **f** **f** **f** **fp** **477** **f**

478 **f** **3** **3** **3** **3** **mf**

488 **f** **ff** **3** **ff** **2** **mf**

497 **f** **mf** **f** **p** **mf**

503 **f** **p** **505** **f** **p** **f**

509 **mf** **f** **p** **f**

517 **mf** **2** **mf** **p** **522** **2**

525 *mf*

533 *f* 538

539 541 544

545 551 *fp* \triangleleft *f*

552 555

558 559 563 *f* *ff* *f* *ff* *f* *ff* *f* *ff*

565 566 576 581 *f* *ff* *mf* *f*

574 581 *ff* *mf* *f* *mf* *mf* *p*

583 586 590 599 *p* *pp* *p*

601 606 *pp* *ppp* *rit.*