

Réminiscence diabolique

Alexandre KOSMICKI

E \flat Horn 2

Réminiscence diabolique

E \flat Horn 2

Alexandre KOSMICKI

$\text{♩} = 60$ 11 $\text{♩} = 72$ Tristamente 4 poco rit.

21 a tempo e animando poco a tempo $\text{♩} = 72$

27 pp mp p mf

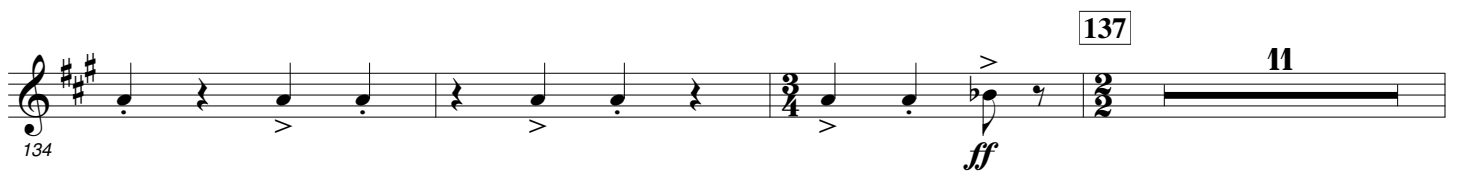
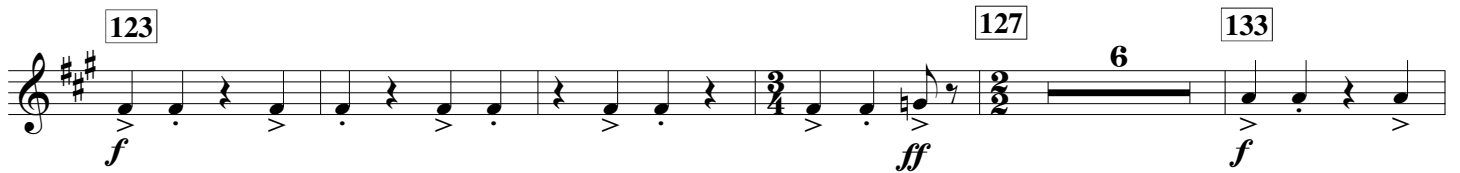
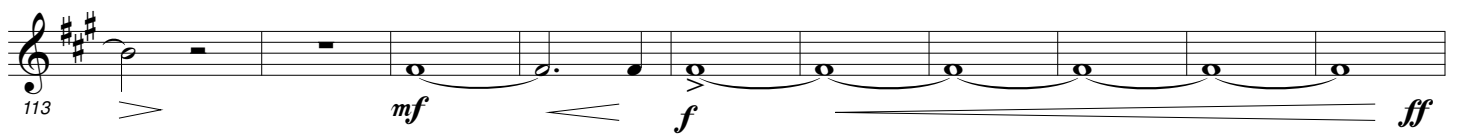
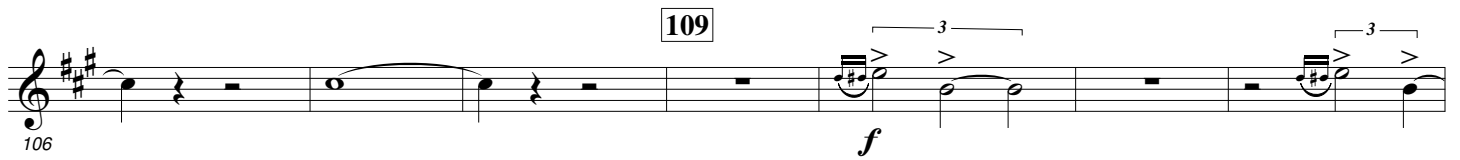
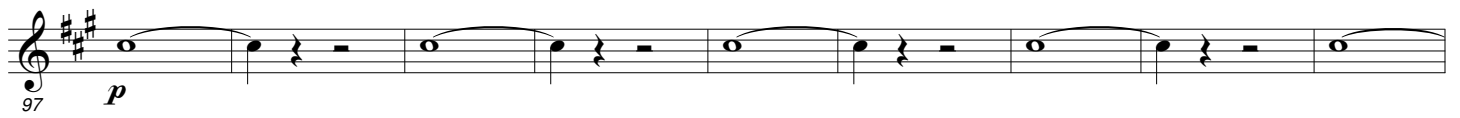
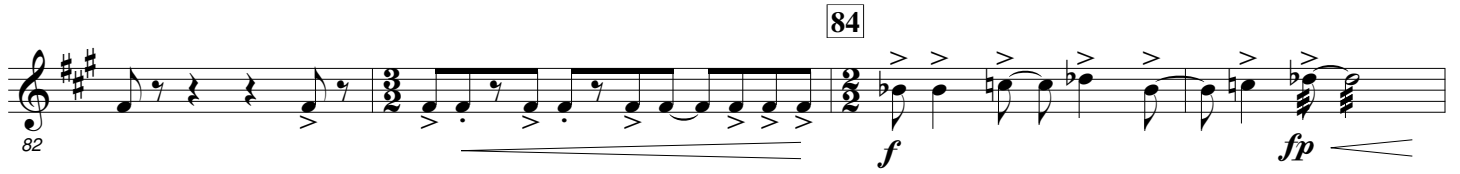
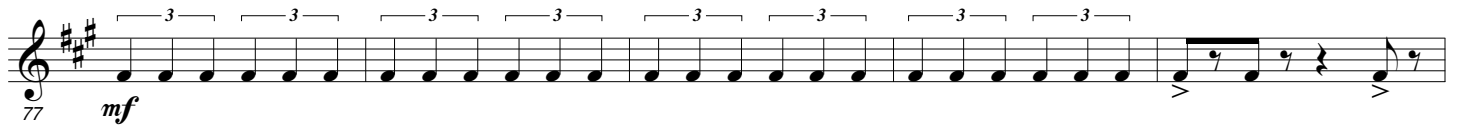
36 $\text{♩} = 110$ Inquieto 35 ff $mf < ff$ $mf < ff$

5 43 Flatt. $mf < f$ $p < f$ $mf < f$ p

55 f

65 ff f $mf < ff$

76 3 p f



148

154

f *f* *mf* *f*

155

160

f *mf* *p*

163

mf *p* *mf* *p* *mf* *p*

170

172

mf *p* *mf e cresc....*

176

180

f

181

184

188

192

208

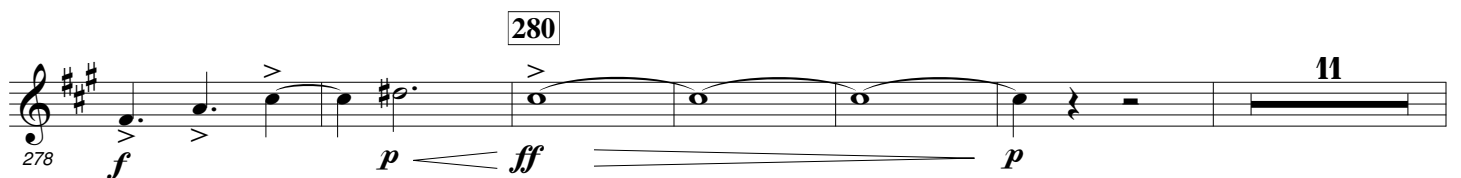
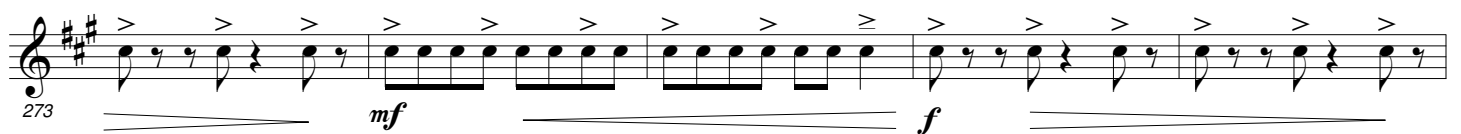
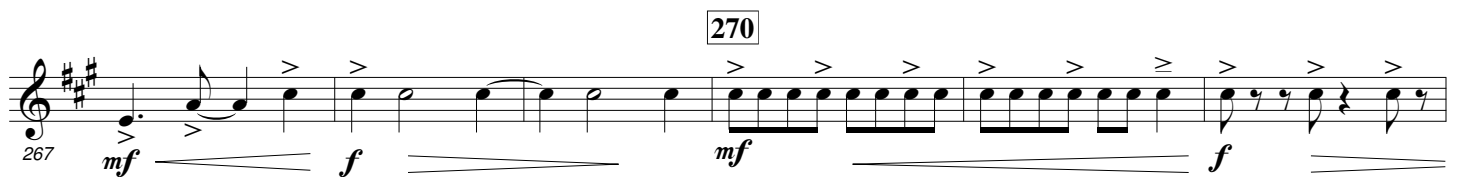
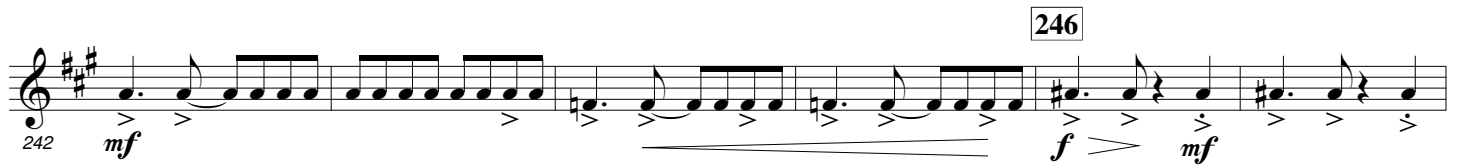
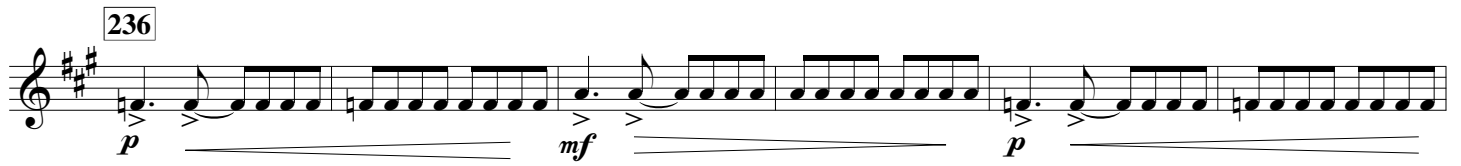
218

ff *p* *mp*

221

228

mf *p*



295

mp

300

Flatt.

ff *p* *f* *mf*

306

p

313

f *mp*

323

5

mp

327

f *f*

334

3

mf *f* *mf* *ff*

342

346

f *ff* *f* *ff* *f* *ff* *f* *ff*

350

349

Flatt.

f *ff* *f* *ff* *pp* *ff* *p* *f*

355 $\frac{4}{4}$ *mp* *f* *p*

364 $\frac{2}{2}$ *ff* *f*

373

380 *mf*

387 Flatt. *ff* *p* *f* 394 *poco rit.*

Pesante ($\text{♩} = 90$) 404 8 412 8 420 7 427 8 436 *f pesante* *fp* *f*

440 $\text{♩} = 110$ 2 6 *mf* *f* 449 *ff*

453 4 458 8 466 5 *f* *ff* *f* *ff*

471 7 *f* *f* *f* *f* *f* *f* *fp* *f*

488

485

mf *f* *mf*

500

495

mf *f* *mf* *f* *p*

503

505

502

mf *f* *p* *mf* *f*

511

508

f *mf* *f* *f*

517

522

515

mf *p* *mf* *p* *mf*

523

p *mf*

533

531

mf *f*

538

541

537

544

543

549 551

fp \triangleleft *f*

555 559

f *ff* *f* *ff*

563

f *ff* *f* *ff*

566

576

572

581 *molto rit. al tempo.....*

mf

.... (♩ = 180) 586 (♩ = 120) ♩ = 60 c..

p *p*

590 599 ♩ = 40 606 ♩ = 50 c.. *rit.*