

Jules Verne on the moon

Bass Trombone in B \flat

Søren HYLDGAARD

Largo, misterioso $\text{♩} = 56$

A

B **C**

D **E** **A tempo**

F **G** **Meno mosso** $\text{♩} = 48$

H **Allegro subito** $\text{♩} = 126$ **I** **Eroico** **J** **K** **L** **M**

con sord. **dolce** **gliss.** **(con sord.)** **(con sord.)**

pp **ff** **pp** **fp** **ff** **p** **mf** **p** **fp** **ff** **f** **mp** **mf** **sfz** **f**

2 **8** **6** **10** **2** **8** **6** **2** **6** **8** **3** **3** **3**

13 **33** **59** **75** **82** **88** **100** **118** **127**

133



138

N



144



150

poco rit.

lunga

O

A tempo

♩ = 126

6



161

P

2

senza sord.

2



172

Q

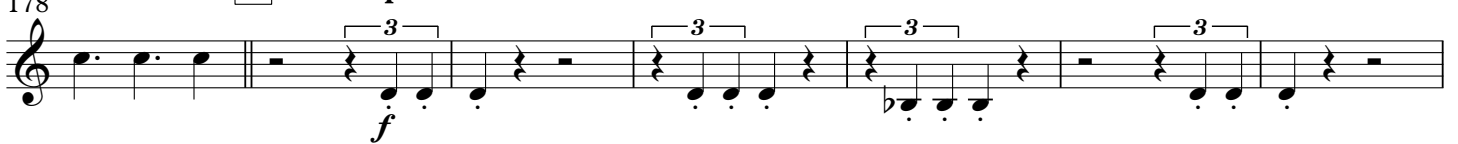
♩ = 130



178

R

subito poco meno



185

S

poco accel.

3



195

T

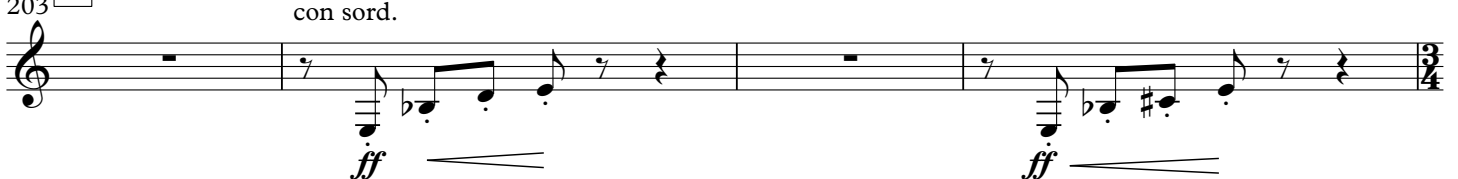
♩ = 126



203

U

con sord.



207

