

# Jules Verne on the moon

Tuba in E $\flat$ 

Søren HYLDGAARD

**Largo, misterioso** ♩ = 56

**div. slow pulse** , *poco a poco cresc.*

**A** *poco a poco cresc.*

div. slow pulse , poco a poco cresc.

*pp* *8vb* *div. slow pulse* *ff* *pp* *pp* *8vb*

*pp* *8vb* *ff* *pp* *pp* *8vb*

12 *gliss.* *gliss.* *gliss.* *gliss.* *ff* *pp* **B** unis

*ff* *pp* *fp* *ff* *mp* **C**

20 *à 2* *3* *3* *3* *3* *3* *mf*

27 *3* one player (no rit.) //

*mf* *mf*

**D** 38 *10* *2* poco rit. **E** A tempo *à 2* *3* *8vb* *mp*

55 *3* *3* *3* *3* *mf* *3*

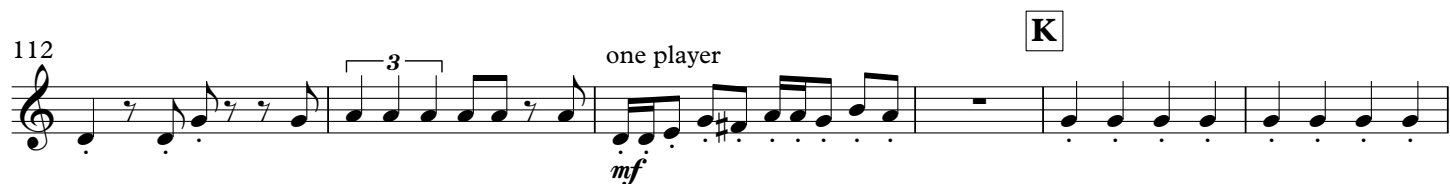
64 one player *mf* **G** *fp*

71 *Meno mosso*  $\text{♩} = 48$  *p* *sfz* *f* *9*

## Tuba in Eb

**H****Allegro subito** ♩ = 126

one player

**J**

Tuba in Eb  
one player

