

Jules Verne on the moon

Horn in E♭ 1

Søren HYLDGAARD

Largo, misterioso ♩ = 56

A

2

pp *ff* *pp* *pp*

B

12

ff *pp* *fp* *ff* *mp*

19

mf

C

26

mf *p*

(no rit.) **D**

35

10

poco rit. 2

E A tempo

mf *mp*

52

mf

F

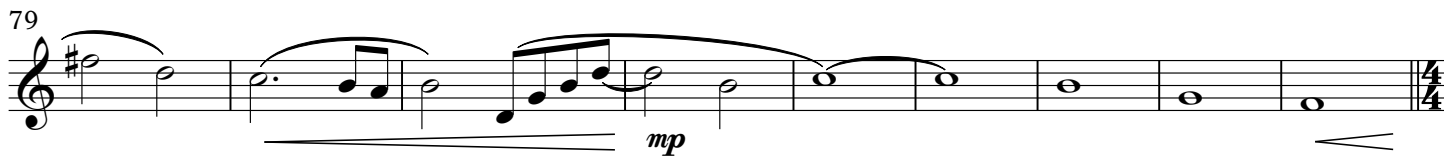
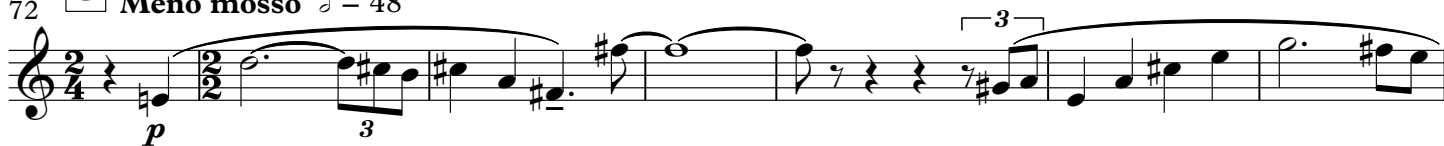
59

mf

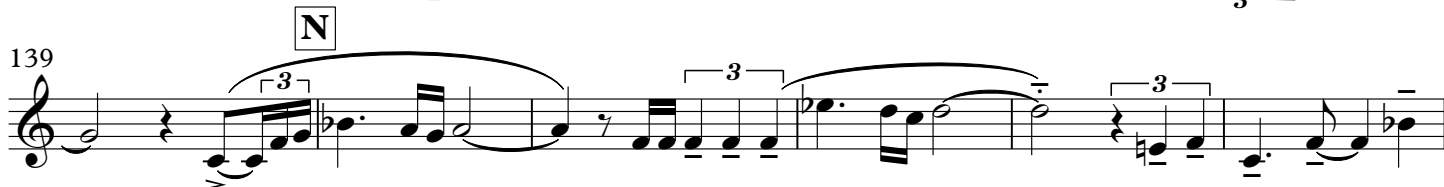
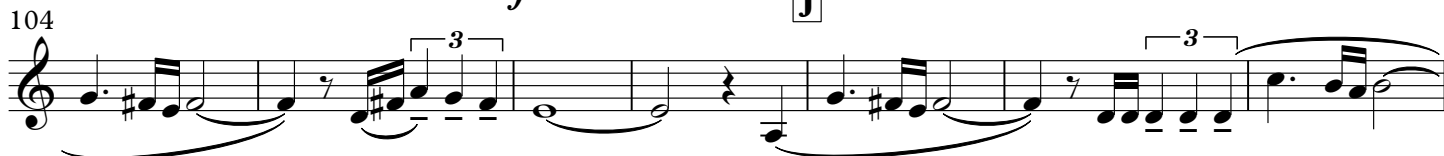
65

p *fp* *ff* turn quickly

G **Meno mosso** $\text{♩} = 48$



H **Allegro subito** $\text{♩} = 126$



Horn in E \flat 1

145 *mf*

151 *poco rit.* *lunga* // **O** *A tempo* $\text{♩} = 126$ *sol* *pp*

157 **P** *mp*

164

172 **Q** $\text{♩} = 130$ *ff*

177 **R** *Maestoso* $\text{♩} = 116$ *subito poco meno* *f* *mf* *< > sim.*

183 **S**

190 *poco accel.* **T** $\text{♩} = 126$ *f*

197 *ff* *fp* *ff* *fp* *flz*

203 **U** *ff* *fp* *ff* *fp* *ff*

207 *mf* *sfz sfz*