

Jules Verne on the moon

Horn in E♭ 2

Søren HYLDGAARD

Largo, misterioso ♩ = 56

A

B

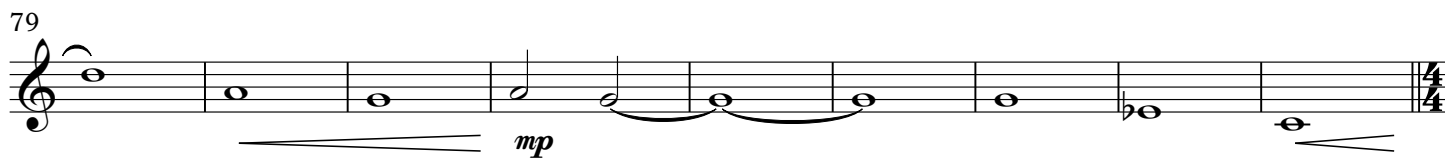
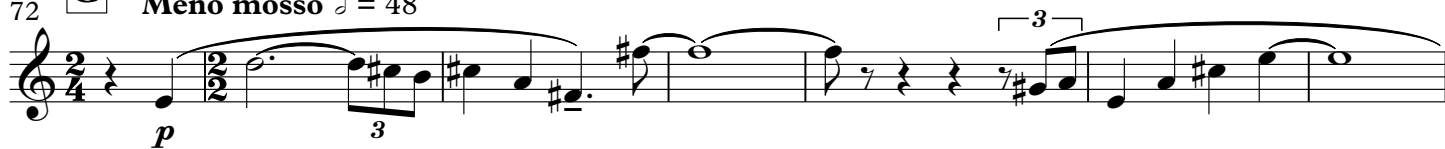
C

D (no rit.) // **E** A tempo

F

turn quickly

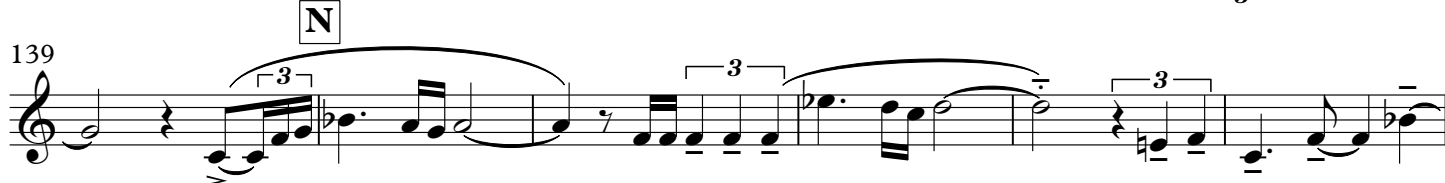
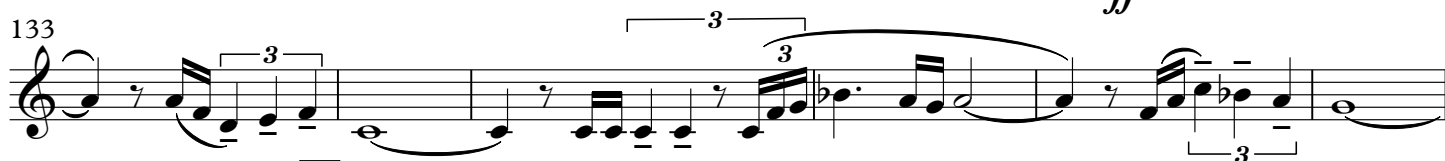
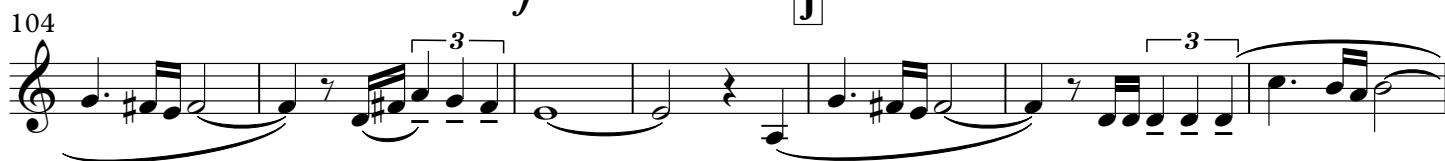
72 **G** **Meno mosso** $\text{♩} = 48$



88 **H** **Allegro subito** $\text{♩} = 126$



98 **I** **Eroico**



Horn in E \flat 2

145 

151 **poco rit.** **lunga** // 

155 **O** **A tempo** ♩ = 126 **P** 

167 

173 **Q** ♩ = 130 

178 **R** **Maestoso** ♩ = 116 **subito poco meno** 

184 **S** 

191 **poco accel.** **T** ♩ = 126 

198 **U** 

205 

208 