

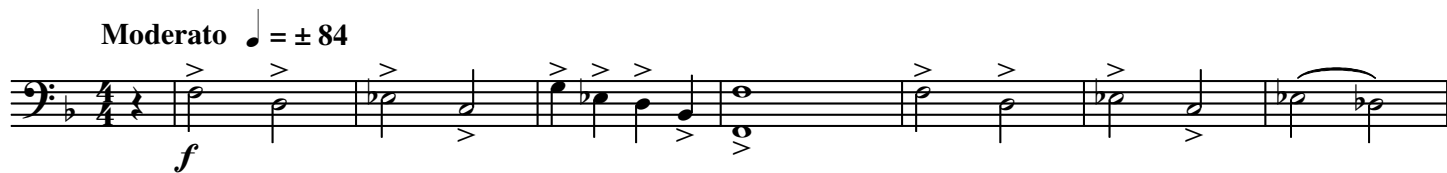
B \flat Bass

Wyatt Earp (End Credits)

James NEWTON HOWARD

Arranged by Silvio CORIGLIONE

Moderato $\text{♩} = \pm 84$

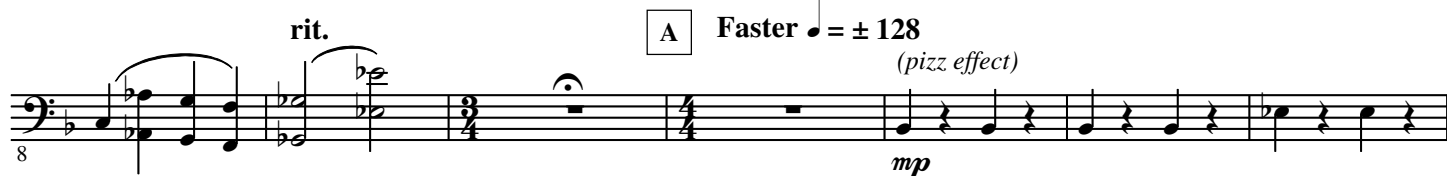


rit.

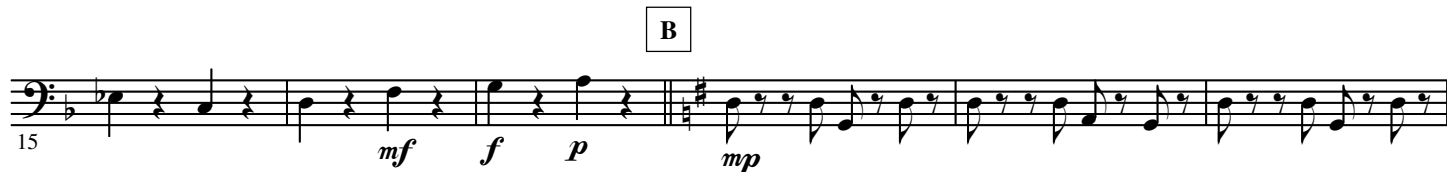
A

Faster $\text{♩} = \pm 128$

(pizz effect)



B



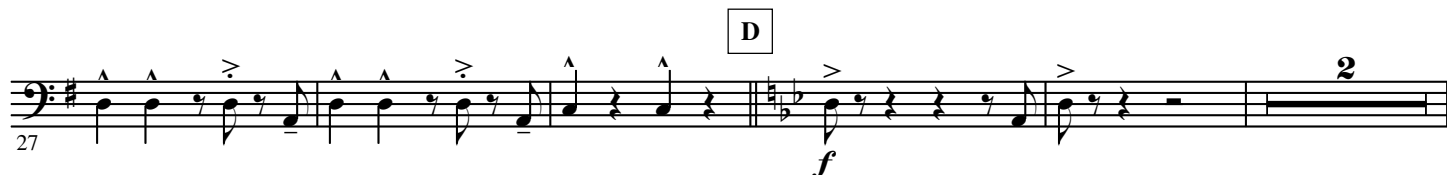
C

Joyously

(ordinario)



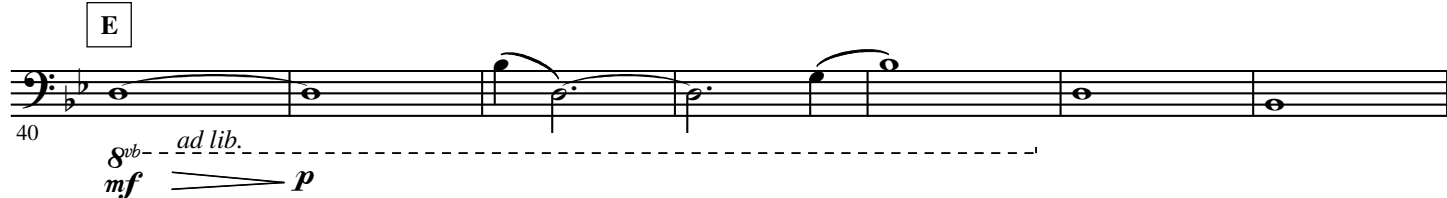
D



Half - Time

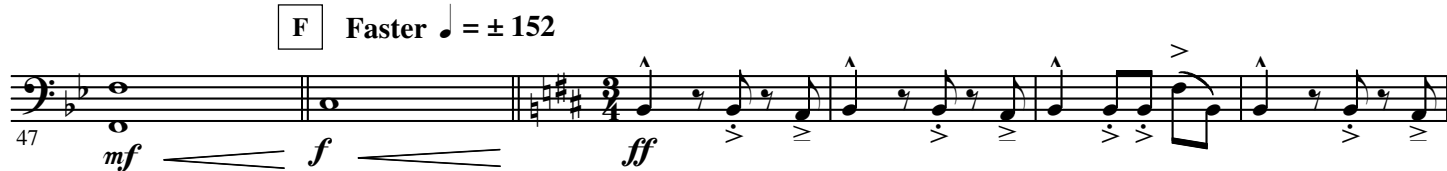


E



F

Faster $\text{♩} = \pm 152$



G

53

H

div.

60

sfz f *sub. mf* *f* *f*

65

I

71

fp *f*

J

3

Slower

77

f *pp*

K

$\text{♩} = \pm 66$

3

div.

85

pp *mf*

L

93

f *mp* *poco*

99

mp *poco* *8vb pp* *ad lib.*