

E♭ Bass

Wyatt Earp

(End Credits)

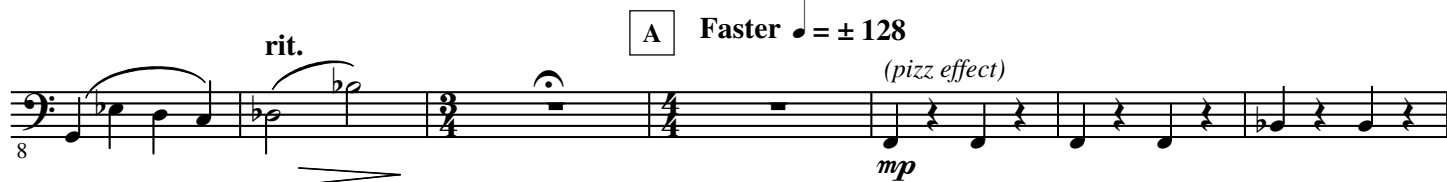
James NEWTON HOWARD

Arranged by Silvio CORIGLIONE

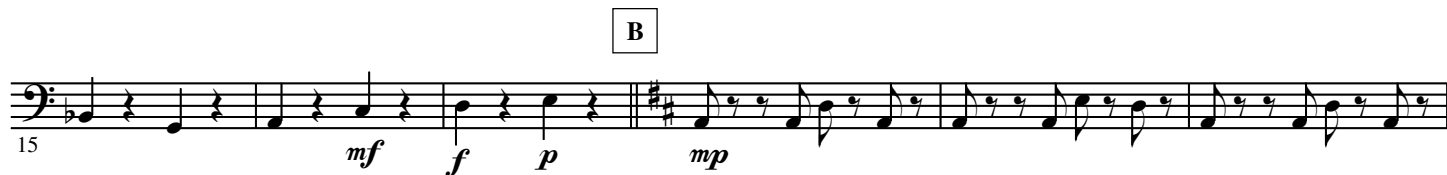
Moderato ♩ = ± 84



A Faster ♩ = ± 128



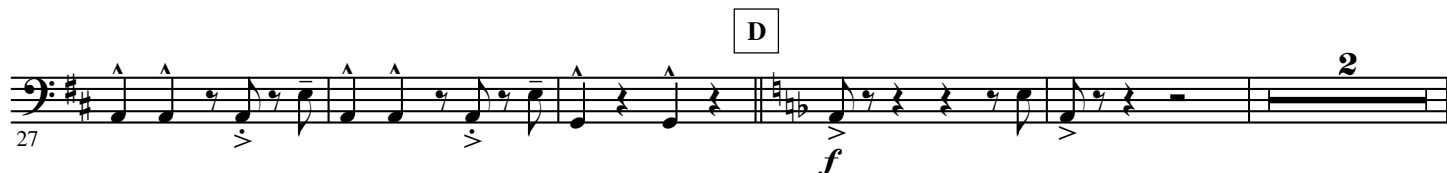
B



C Joyously
(ordinario)



D



Half - Time



E



F Faster ♩ = ± 152



G

53

H

60

sfz f *sub. mf* *f*

65

I

71

fp *f*

J

77

f *pp*

Slower

K

85

pp *mf*

$\text{♩} = \pm 66$

L

93

f *mp* *poco*

99

mp *pp*