

SYMPHONY N° 1

B \flat Euphonium

Gustav MAHLER

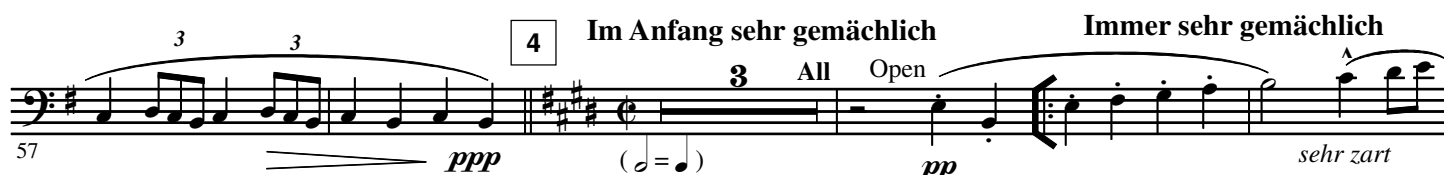
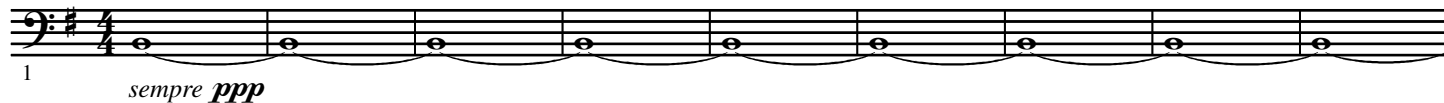
Arr. José SCHYNS

Langsam. Schleppend.

I.

Muted Two players (stagger breathing)

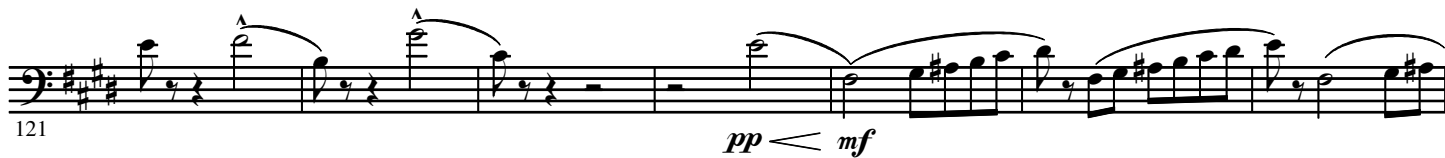
Più mosso



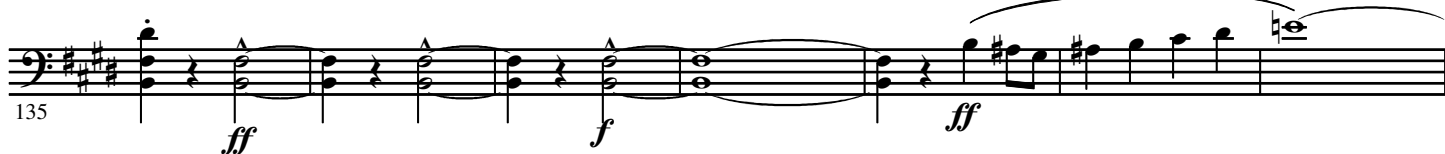
8

7

Steigerung bis zum Zeichen *



9

* $\text{♩} = 116$ 

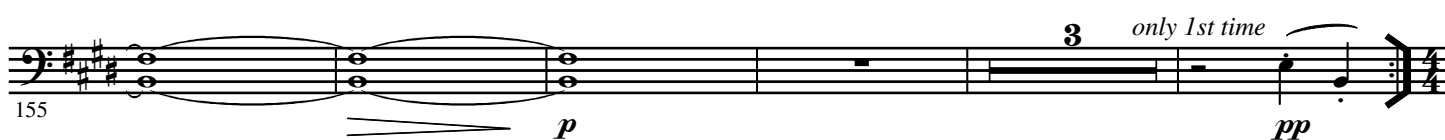
10



11 Noch ein wenig beschleunigen



Etwas zurückhaltend



12

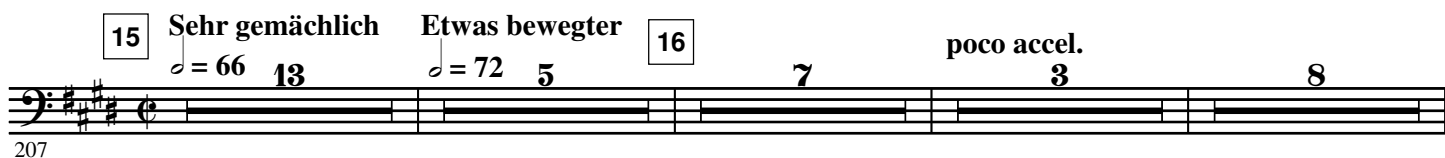
 $\text{♩} = 96$

13



14

Immer noch zurückhaltend



17 8 poco accel. 18 $\text{♩} = 96$ 14 19 4 Meno 4

243

Staff 17-19: Bass clef, key of D major. Staff 17 has a whole rest. Staff 18 has a whole rest. Staff 19 has a whole rest. Dynamics: *poco accel.* (17-18), *Meno* (19).

20 Meno mosso 21 14 22 3 Zurückhaltend

279

Staff 20-22: Bass clef, key of D major. Staff 20 has a whole rest. Staff 21 has a whole rest. Staff 22 has a whole rest. Dynamics: *Meno mosso* (20), *Zurückhaltend* (22), *p* (22).

318 2 rit. 23 a tempo Zurückhaltend 2

Staff 23-25: Bass clef, key of D major. Staff 23 has a whole rest. Staff 24 has a whole rest. Staff 25 has a whole rest. Dynamics: *rit.* (23), *a tempo* (24), *Zurückhaltend* (25), *f* (23), *f* (24), *f* (25).

326 rit. a tempo Breiter werden bis Zeichen *

Staff 26-28: Bass clef, key of D major. Staff 26 has a whole rest. Staff 27 has a whole rest. Staff 28 has a whole rest. Dynamics: *rit.* (26), *a tempo* (27), *Breiter werden bis Zeichen ** (28), *p* (26), *fp* (27), *fp* (28).

333 24 fp p fp fp ppp

Staff 29-31: Bass clef, key of D major. Staff 29 has a whole rest. Staff 30 has a whole rest. Staff 31 has a whole rest. Dynamics: *fp* (29), *p* (30), *fp* (31), *fp* (31), *ppp* (31).

339 25 Immer noch etwas zurückhaltend f

Staff 32-34: Bass clef, key of D major. Staff 32 has a whole rest. Staff 33 has a whole rest. Staff 34 has a whole rest. Dynamics: *Immer noch etwas zurückhaltend* (32), *f* (32), *f* (33), *f* (34).

345 ff

Staff 35-37: Bass clef, key of D major. Staff 35 has a whole rest. Staff 36 has a whole rest. Staff 37 has a whole rest. Dynamics: *ff* (35), *ff* (36), *ff* (37).

350 * Vorwärts drängend ff p

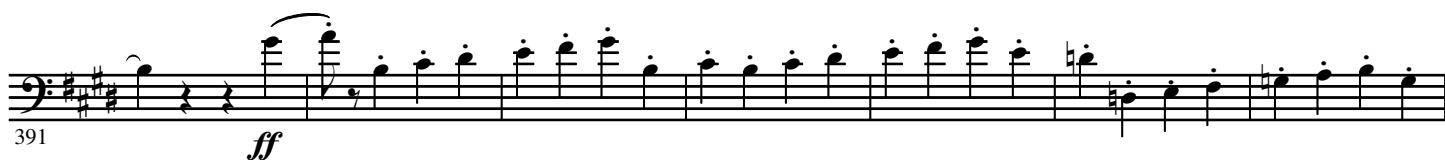
Staff 38-40: Bass clef, key of D major. Staff 38 has a whole rest. Staff 39 has a whole rest. Staff 40 has a whole rest. Dynamics: ** Vorwärts drängend* (38), *ff* (38), *p* (39), *p* (40).

356 26 a tempo $\text{♩} = 84$ 4 Più mosso 27 Etwas bewegter 28 8 5

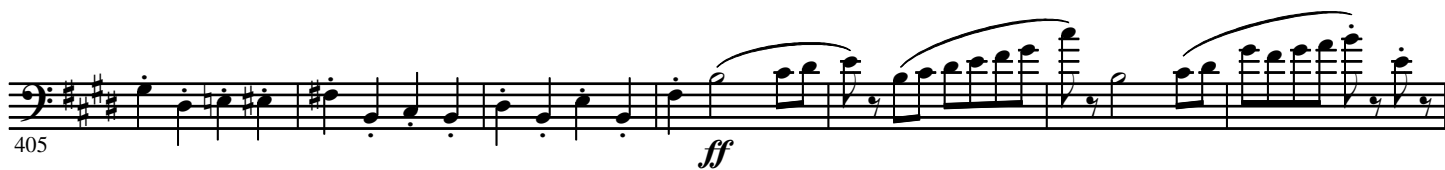
Staff 41-43: Bass clef, key of D major. Staff 41 has a whole rest. Staff 42 has a whole rest. Staff 43 has a whole rest. Dynamics: *a tempo* (41), *♩ = 84* (41), *Più mosso* (42), *Etwas bewegter* (43), *ff* (41), *ff* (42), *ff* (43).

poco accel.

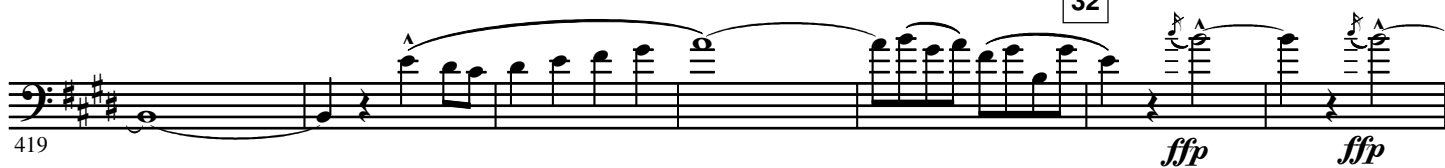
29



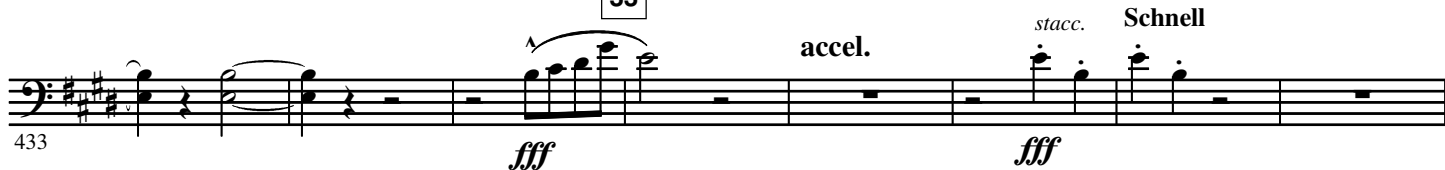
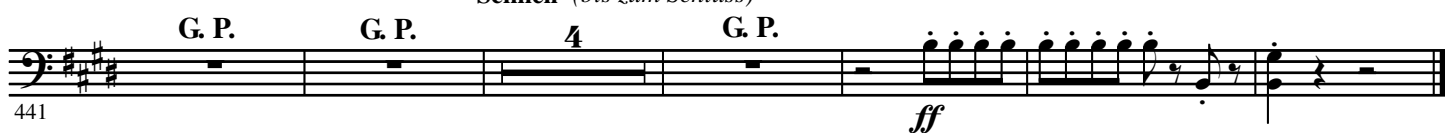
30

31 $\text{♩} = 112$ 

32



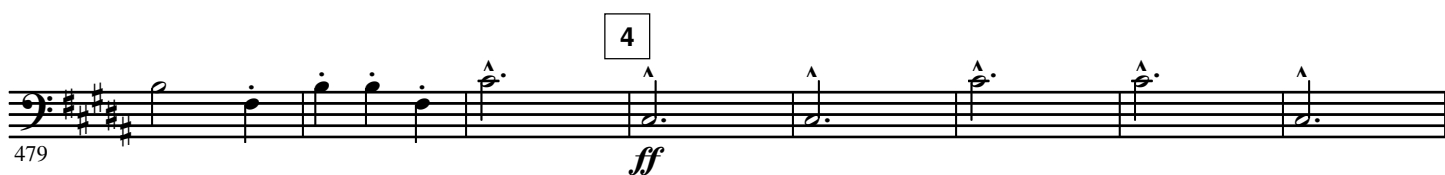
33

*Schnell (bis zum Schluss)*

II.

1 Kräftig bewegt, doch nicht zu schnell

♩. = 66



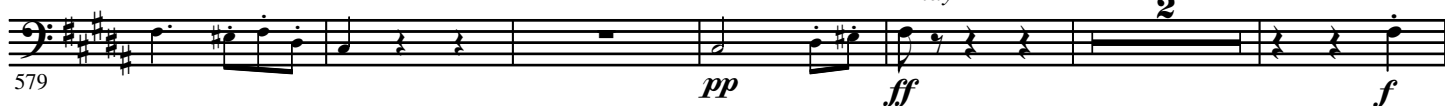
11

cue Cello alternate

12



13 Vorwärts

Play

14



Immer vorwärts



15

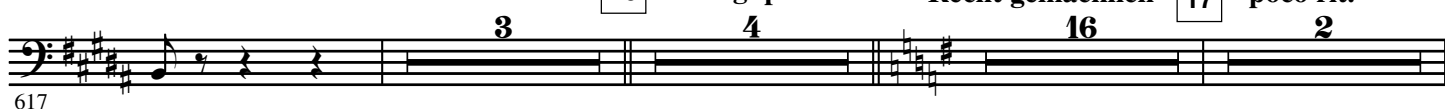
*accelerando al segno **

TRIO

16 Mässig poco rit.

Recht gemächlich

17 poco rit.



a tempo

18

19

20



673 21 Etwas frischer

f

This staff contains measures 673 to 680. It features a series of eighth notes in a descending and then ascending pattern. A dynamic marking of *f* (forte) is placed below the staff at measure 678.

681 22 Wieder gemächlicher

mf *p*

This staff contains measures 681 to 688. It continues the eighth-note pattern. A dynamic marking of *mf* (mezzo-forte) is at measure 684, and *p* (piano) is at measure 688. A slur covers measures 686 to 688.

693 23 24

4 8 11

This staff contains measures 693 to 700. Measures 693-695 have eighth-note patterns. Measures 696-700 are whole rests. Above measures 696-698, 699-700, and 700 are the numbers 4, 8, and 11 respectively, indicating fingerings.

720 25 26 Tempo I.

ff

This staff contains measures 720 to 737. Measure 720 is a whole rest. Measures 721-737 feature a steady eighth-note pattern. A dynamic marking of *ff* (fortissimo) is at measure 725. Above measure 721 is the number 15, indicating a fingering.

742

mf

This staff contains measures 742 to 749. It continues the eighth-note pattern. A dynamic marking of *mf* is at measure 749.

750 27

ff *mf* *ff* *mf*

This staff contains measures 750 to 757. It features alternating eighth-note patterns and quarter notes. Dynamic markings of *ff*, *mf*, *ff*, and *mf* are placed below the staff at measures 750, 752, 754, and 756 respectively.

758 28

This staff contains measures 758 to 765. It features a steady eighth-note pattern.

766 29 Vorwärts

3

This staff contains measures 766 to 773. It features a steady eighth-note pattern. A dynamic marking of *f* is at measure 766. Above measure 773 is the number 3, indicating a fingering.

776 30

f *ff*

This staff contains measures 776 to 783. It features a steady eighth-note pattern. Dynamic markings of *f* and *ff* are at measures 776 and 783 respectively.

784 31

This staff contains measures 784 to 791. It features a steady eighth-note pattern.

792 32

Vorwärts *mf* *ff*

2

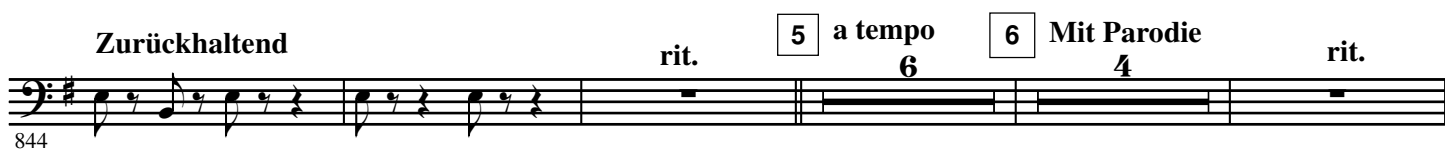
This staff contains measures 792 to 799. It features a steady eighth-note pattern. The word "Vorwärts" is written above the staff. Dynamic markings of *mf* and *ff* are at measures 792 and 796 respectively. Above measure 799 is the number 2, indicating a fingering.

accelerando al Fine

scharf abreißen



III.



12



909

13



915



923

14



929

15



935

16



946

poco rit.

17

Tempo I.

rit.

18

Tempo I.

19

cue Cello



952

pp



967

ppp

pppp

Attacca

IV.

1

Stürmisch bewegt. $\text{♩} = 92$

Play

2

secco



977

fff

ff

ff³

3

6

4

6



994

ff

mf

ff

5

4

2

2

1013

ff

ff

ff

ff

6

Energisch

1026

ff

fp

ff

ff

1033

f

ff

7

1040

mf

1047

ff

1054

8

1060

f

fp

fp

1066

ff

9

Zurückhaltend

1072

f

ff

f

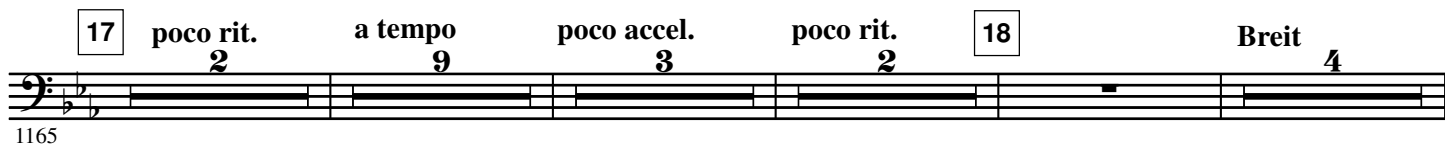
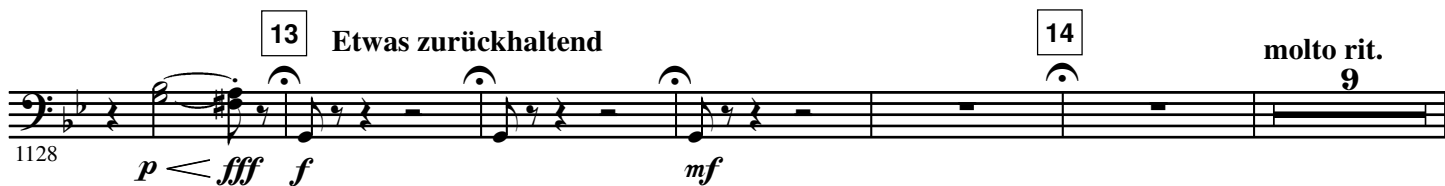
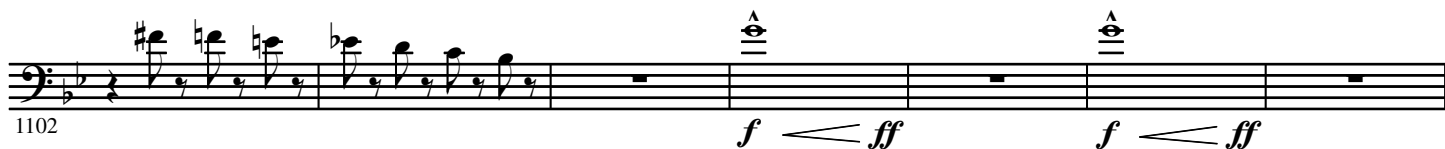
a tempo

2

1080

ff

ff



20

7

21

Langsam
Two players (stagger breathing)

1207 *ppp*

22

Wieder wie zu Anfang. Stürmisch bewegt.

1220 *ff*

1233 *fp*

1243 *fp* *fp* *fp* *fp* *fp* *ff*

23

3

1249 *ff*

24

Nicht eilen

1258 *ff*

25

7

26

8

cue Cello

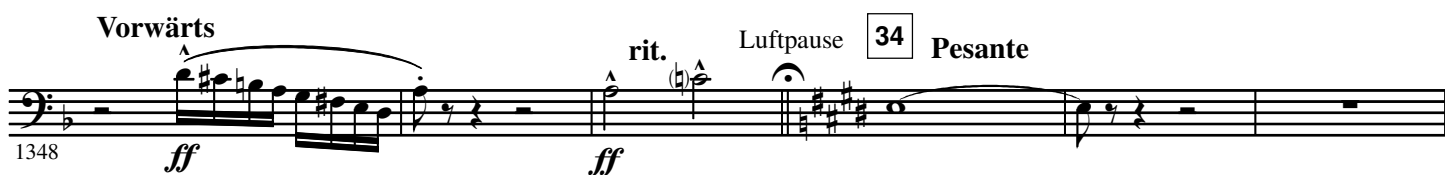
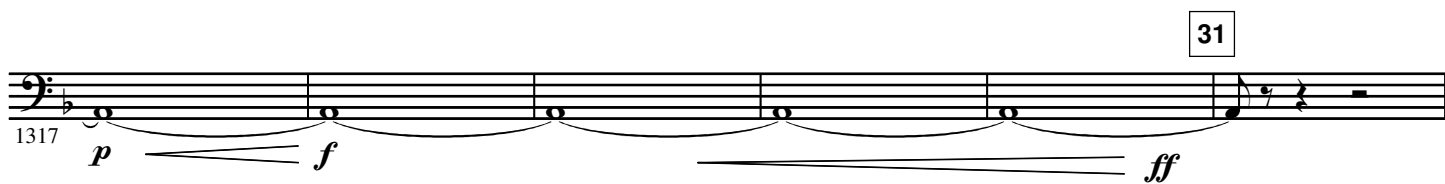
1266 *fp*

27

Play

28

1287 *p* *ppp*



a tempo (aber etwas gemässiger)



diminuendo



37 Sehr zurückhaltend

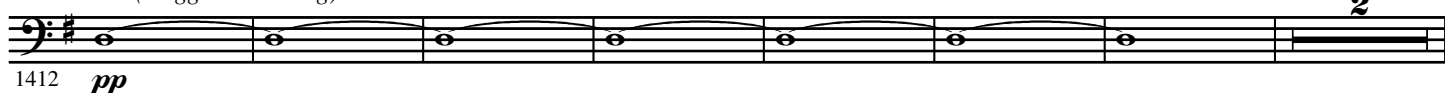


38 Sehr langsam Più mosso molto rit.

39 Langsam
(stagger breathing)

Più mosso

Sehr zurückhaltend



rit. Kurzer Halt **40** Kurzer Halt **4** a tempo **3** poco accel. **molto rit.**

1421

Wieder sehr langsam **41** Sehr langsam **18** Zurückhaltend **4** **42** a tempo **3** Etwas drängend **4**

1432

43 a tempo **2** rall. **f** **ff** **ff**

1463

44 Più mosso **poco accel.** **fff** **dim.**

1472

Tempo I. **13** **pp** **fff** **ff**

1480

1499 **f** **p** **pp**

1499

45 **3** **7** **ff** **f** **mf** **p**

1506

1521

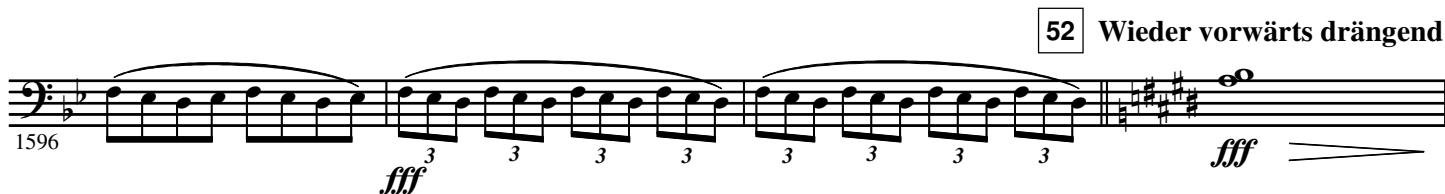
1521

46 **p** **pp**

1527

1533 **ff** **5**

1533



Zurückhaltend

Immer breiter

52 Wieder vorwärts drängend

53 Vorwärts

1611 *ff* *rit.* **54** *f*

Staff 1611-1615: Bass clef, key of D major (two sharps). Measure 1611 starts with a half note D4, followed by a quarter rest. Measure 1612 has a half note D4. Measures 1613-1615 contain a continuous eighth-note triplet pattern: D4-E4-F#4-G4-A4-B4-C#5-D5.

1616

Staff 1616-1620: Continuation of the eighth-note triplet pattern from the previous staff.

1621 **55** *ff*

Staff 1621-1625: Continuation of the eighth-note triplet pattern. Measure 1625 ends with a half note G4.

1626

Staff 1626-1631: Continuation of the eighth-note triplet pattern. Measure 1631 ends with a half note G4.

56 **Triumphal Pesante**
1632 *f* (3 taktig)

Staff 1632-1638: Bass clef, key of D major. Measure 1632 starts with a half note D4. Measures 1633-1638 contain a half-note pattern: D4-E4-F#4-G4-A4-B4-C#5-D5.

(2 taktig)
1639 *p* *ff*

Staff 1639-1645: Bass clef, key of D major. Measure 1639 starts with a half note D4. Measures 1640-1645 contain a half-note pattern: D4-E4-F#4-G4-A4-B4-C#5-D5.

57
1646 *ff* *ff* > *p* *ff* > *p* *ff* > *p* *ff* > *p* *ff* > *p*

Staff 1646-1651: Bass clef, key of D major. Measure 1646 starts with a half note D4. Measures 1647-1651 contain a half-note pattern: D4-E4-F#4-G4-A4-B4-C#5-D5.

58
1652 *ffp* *ffp* *ffp* *ff*

Staff 1652-1657: Bass clef, key of D major. Measure 1652 starts with a half note D4. Measures 1653-1657 contain a half-note pattern: D4-E4-F#4-G4-A4-B4-C#5-D5.

1658

Staff 1658-1662: Continuation of the half-note pattern from the previous staff.

1663 *ff*

Staff 1663-1667: Continuation of the half-note pattern from the previous staff.

59

**60** Von hier an nicht mehr breit**Drängend bis zum Schluss****61**