

# SEVEN SHORT FANFARES

## SEASCAPES

Tuba in B $\flat$

Naoya WADA

Majestic ♩ = 84-88

Musical score for 'SEASCAPES' in 4/4 time, Tuba in B $\flat$ . The score consists of three staves. The first staff starts with a whole rest, followed by a series of eighth and quarter notes with accents and slurs, marked *f* and *mf*, ending with a *cresc.* marking. The second staff, labeled 'A' and starting at measure 8, continues the melodic line with accents and slurs, marked *f*. The third staff, starting at measure 12, features a long note followed by a series of eighth notes with accents and slurs, marked *sfp* and *sffz*.

## THE FLAME OF MAJESTY

Majestic ♩ = 88

Musical score for 'THE FLAME OF MAJESTY' in 4/4 time, Tuba in B $\flat$ . The score consists of five staves. The first staff starts with a whole rest, followed by a series of eighth and quarter notes with accents and slurs, marked *f*. The second staff, labeled 'B' and starting at measure 21, continues the melodic line with accents and slurs, marked *mf*. The third staff, labeled 'C' and starting at measure 28, continues the melodic line with accents and slurs. The fourth staff, labeled 'D' and starting at measure 35, continues the melodic line with accents and slurs, marked *f*. The fifth staff, starting at measure 42, features a long note followed by a series of eighth notes with accents and slurs, marked *sfp* and *sffz*.

## UBUNTU

Brilliantly  $\text{♩} = 84$ 

55

## THE GLORIOUS CENTURY

Brightly  $\text{♩} = 98 - 104$ 

69

76

86

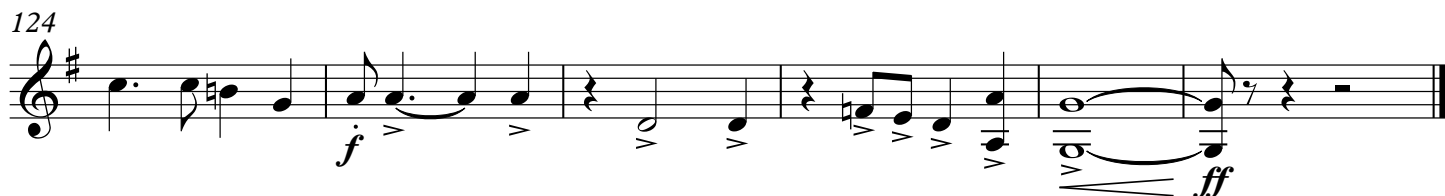
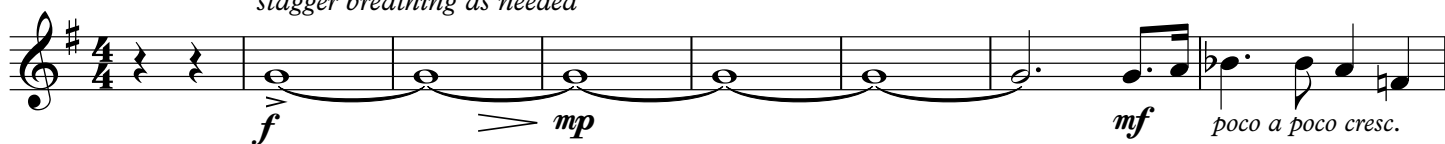
95

103

110

Tuba in B $\flat$ 

## THE BIG DIPPER

Deliberate  $\text{♩} = 84$ *stagger breathing as needed*

## FLOWER BLOOMING

Brilliantly  $\text{♩} = 84$ 

## FIREFLY STARS

Powerfully  $\text{♩} = 108$ 