

BLUES AND GOSPEL

Tuba in B \flat BC

Luc GISTEL

Shuffle Blues $\text{♩} = 112$ $\text{♩} = \text{♩}^3$

A

f *mf*

7

13

1. 2.

B

18

f

25

mf *mf*

31

1. 2.

f

C Gospel (fast) $\text{♩} = 132$

37

mf

D

44

mf

51

57

1. 2.

Tuba in B \flat BC**E**

63



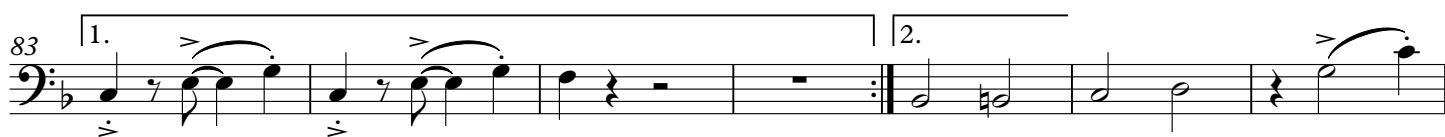
70

**F**

77



83

**G**

90



97

**H**

104



111

**I**

118



125

