



# BLUES AND GOSPEL

Tuba in E $\flat$  BC

Luc GISTEL

Shuffle Blues  $\text{♩} = 112$   $\text{♩} = \text{♩} \text{ } \text{♩}$

A



B



C Gospel (fast)  $\text{♩} = 132$



D



**E**

63



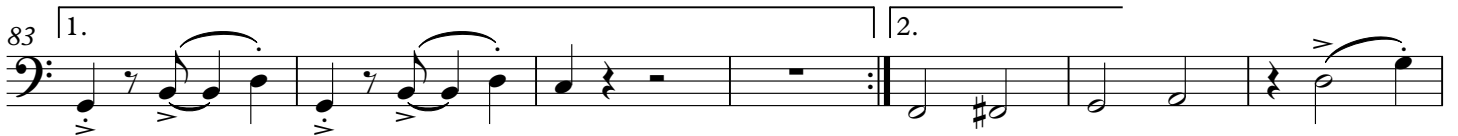
70

**F**

77



83

**G**

90



97

**H**

104



111

**I**

118



125

