

TURBULENCES

E♭ Horn 1

Alexandre KOSMICKI

♩ = 116

5 8 13

mf \leq ff *mf*

14

f

21 22 7 *mf*

33 35 39 *f*

40 3 *mf* *f*

49 50 6 59 3 *p* \leq *f* *mp* *f* *f*

64 3 67 6 76 *mf* *mf* *f*

77 3

84

88 89 *ff* *f*

95 101

ff

104

113 117

ffp *ff* *f*

122 138 ♩ = 80

f

148 150 ♩ = 126

162 170 (♩ = 132 c..) poco più mosso

molto rit. *mp*

178 186 8 194

mf

196

p *mp*

206 214 7

poco f *p* *mf* *p* *mf* *p* *mf* *p*

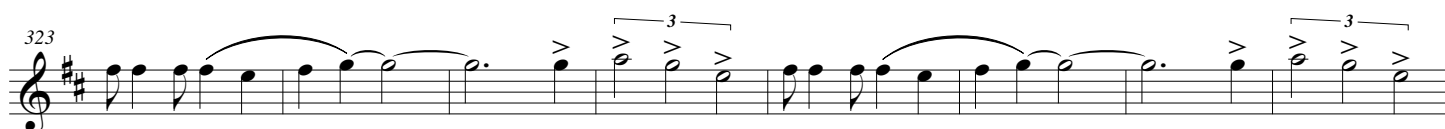
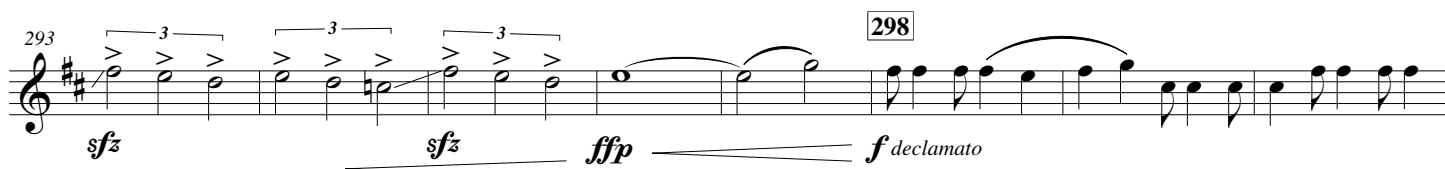
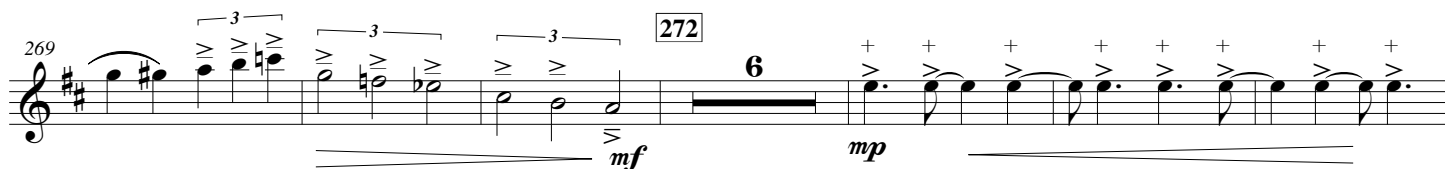
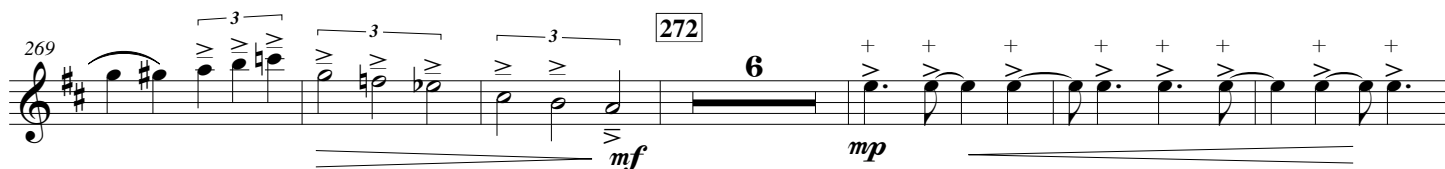
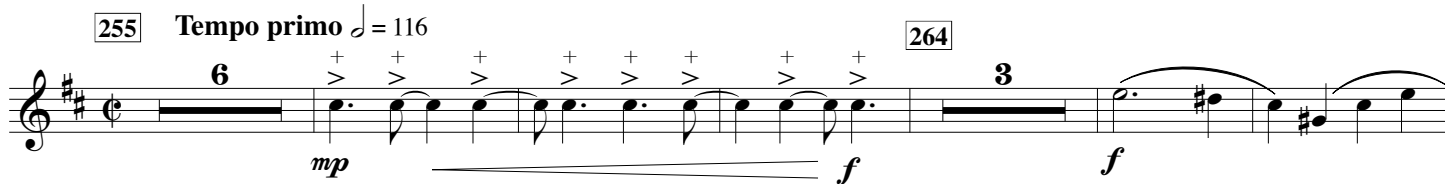
222 231 a tempo 15 rit.

mf *f* *p* *rit.*

[247] più tranquillo ♩ = 96



[255] Tempo primo ♩ = 116



331

ff *fp*

340

341

f *mf*

348

349

f *mf*

356

359

f *mf* *f*

364

369

mf *f* *mf* *ff* *mf*

378

♩ = 132 Molto deciso

f *declamato molto*

384

388

ff

389

accel.

p *f*

397

fp *ff*