

**E $\flat$  Horn 4**

# **Mouvements frénétiques**

Alexandre KOSMICKI

# Mouvements frénétiques

E♭ Horn 4

Alexandre KOSMICKI

♩ = 142 Molto energico e giocoso

8 9 17 3 19-21 23 25 31 33 2 34-35 40 41 9 51 42-50 62 17 62-78 80 3 81-83 90 92 97 99

*f* *mf* *p* *f* *p* *f* *mf* *f* *mf* *f* *mf* *p* *mp* *p* *mf* *f* *mf* *p* *f* *p* *f* *p* *f* *p*

104 107

109-111

104-111: Musical staff with treble clef, key signature of three sharps (F#, C#, G#). The staff contains a series of eighth notes, followed by a measure with a half note and a fermata. Dynamics include *f* and *p*. A bracket indicates a crescendo from *f* to *p*. A measure rest is marked with a '3' above it.

112 115

112-118: Musical staff with treble clef, key signature of three sharps. The staff contains a series of eighth notes, followed by a measure with a half note and a fermata. Dynamics include *mf*, *f*, *mf*, *f*, and *p*. A bracket indicates a crescendo from *mf* to *f*. A measure rest is marked with a '3' above it.

119

119-126: Musical staff with treble clef, key signature of three sharps. The staff contains a series of eighth notes, followed by a measure with a half note and a fermata. Dynamics include *mf*, *f*, and *f*. A bracket indicates a crescendo from *mf* to *f*. A measure rest is marked with a '3' above it.

127 130

127-134: Musical staff with treble clef, key signature of three sharps. The staff contains a series of eighth notes, followed by a measure with a half note and a fermata. Dynamics include *p* and *f*. A bracket indicates a crescendo from *p* to *f*. A measure rest is marked with a '3' above it.

135 137 147 157

135-158: Musical staff with treble clef, key signature of three sharps. The staff contains a series of eighth notes, followed by a measure with a half note and a fermata. Dynamics include *f*. A bracket indicates a crescendo from *f* to *f*. A measure rest is marked with a '3' above it.

161 165 174

161-173: Musical staff with treble clef, key signature of three sharps. The staff contains a series of eighth notes, followed by a measure with a half note and a fermata. Dynamics include *mf*, *f*, and *p*. A bracket indicates a crescendo from *mf* to *f*. A measure rest is marked with a '3' above it.

178 179 187

178-187: Musical staff with treble clef, key signature of three sharps. The staff contains a series of eighth notes, followed by a measure with a half note and a fermata. Dynamics include *f*, *p*, and *mp*. A bracket indicates a crescendo from *p* to *f*. A measure rest is marked with a '3' above it.

188 191

188-202: Musical staff with treble clef, key signature of three sharps. The staff contains a series of eighth notes, followed by a measure with a half note and a fermata. Dynamics include *f*. A bracket indicates a crescendo from *f* to *f*. A measure rest is marked with a '3' above it.

203 207

203-218: Musical staff with treble clef, key signature of three sharps. The staff contains a series of eighth notes, followed by a measure with a half note and a fermata. Dynamics include *p*. A bracket indicates a crescendo from *p* to *f*. A measure rest is marked with a '3' above it.

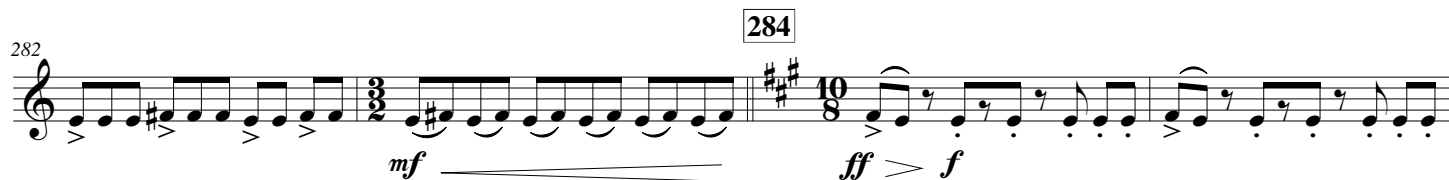
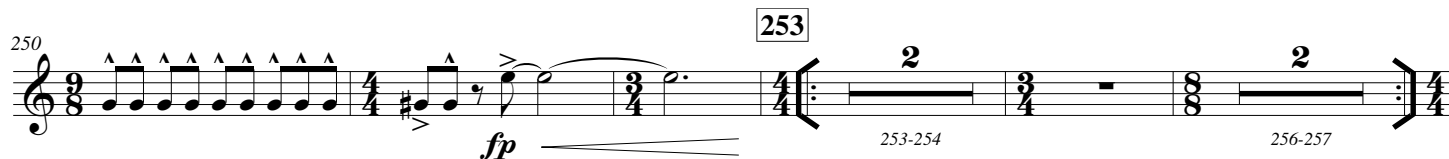
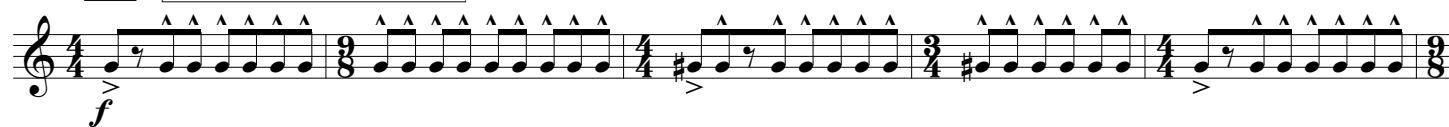
220 225

220-225: Musical staff with treble clef, key signature of three sharps. The staff contains a series of eighth notes, followed by a measure with a half note and a fermata. Dynamics include *p*. A bracket indicates a crescendo from *p* to *f*. A measure rest is marked with a '3' above it.

230 238

230-242: Musical staff with treble clef, key signature of three sharps. The staff contains a series of eighth notes, followed by a measure with a half note and a fermata. Dynamics include *p*. A bracket indicates a crescendo from *p* to *f*. A measure rest is marked with a '3' above it.

245 ♩ = 176 c. Furioso (♩ = ♩ al fine)



296 300 6

300-305

306 *p* *f*

310 *ff* *f* *ff*

314 *f* *ff* 318 3 318-320

321 *p* *mf*

326 *f* 330 *ff*

331 *mf* *ff* *mf*

337 338 *f* *p sub*

342 345 4 349 4 353 4 357 4

345-348 349-352 353-356 357-360

361 4 365 7 373 *f* 376 2

361-364 365-371 374-375

379

*mf*

387

*mf* *f* *mf* *f*

389 398 406

389-397 398-405

*f*

411 419

409-410 411-418

424

457

460

*p* sub e molto cresc.

465

469

*ff*

*p*