

**E $\flat$  Horn 2**

# **Mouvements frénétiques**

Alexandre KOSMICKI

# Mouvements frénétiques

**E♭ Horn 2**

Alexandre KOSMICKI

**♩ = 142 Molto energico e giocoso**

The first staff of music is in treble clef with a key signature of three sharps (F#, C#, G#) and a 3/4 time signature. It begins with a whole rest. The melody starts on a half note G4 (marked with an accent), followed by a quarter note F#4 (marked with an accent), a quarter note E4 (marked with an accent), and a quarter note D4 (marked with an accent). This is followed by a quarter rest, then a half note C#4 (marked with an accent), and a quarter note B3 (marked with an accent). The staff concludes with a double bar line, followed by a half note A3 (marked with an accent), a half note G3 (marked with an accent), and a half note F#3 (marked with an accent). The dynamic marking *mf* is placed below the first note of the final measure.

8

9

*p*  $\triangleleft$  *f*

*f*

*p*

$\triangleleft$  *f*

51

*p* *mf* *f* *mf* *p*

[illegible]

93

99

*mf*

*p* < *f*

*f*

3

103 107

*p* *f* *p*

110



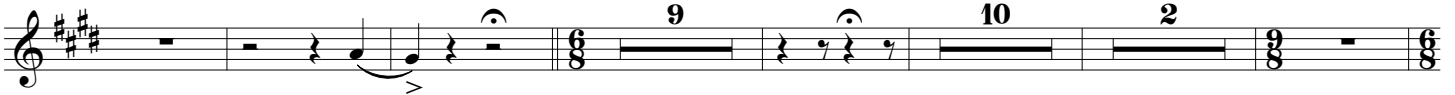
118



126



134



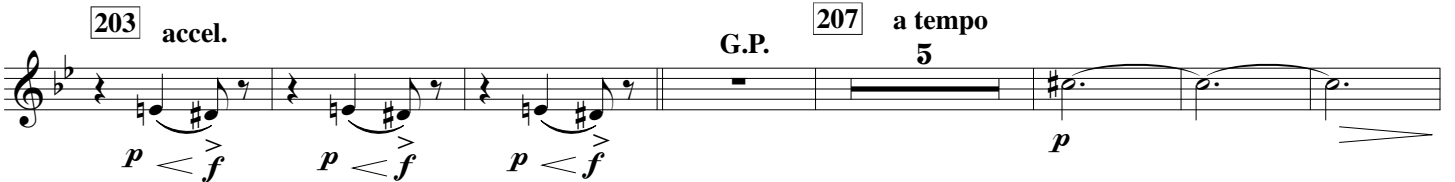
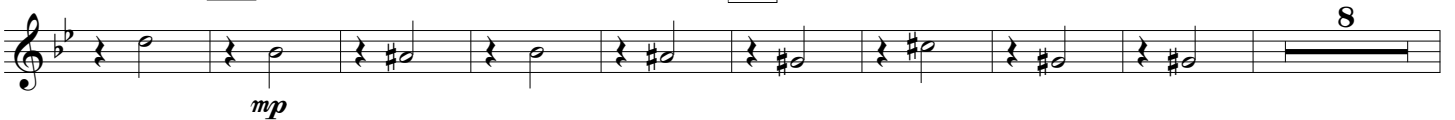
160



176



186



215



229



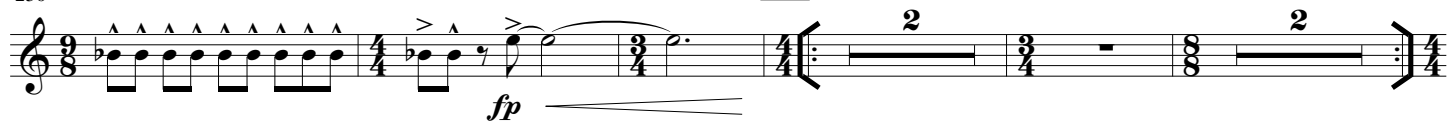
245

♩=176 c. Furioso (♩=♩ al fine)



250

253



258

259



263



268

accel. molto

270

273

Impetuoso !! ♩=200



274



278

279



282

284



286

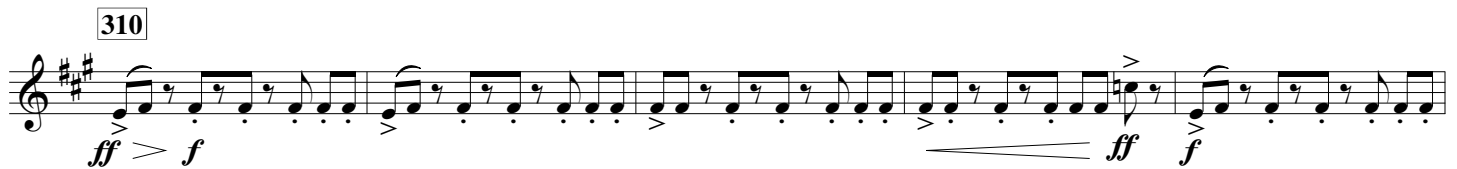
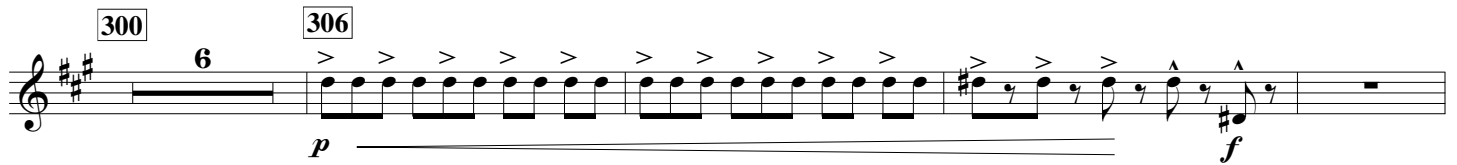


291

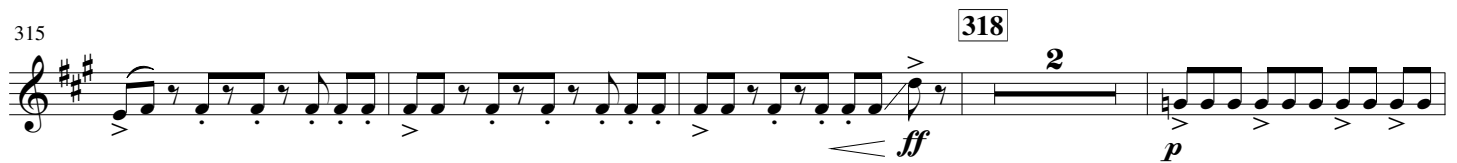
292



296



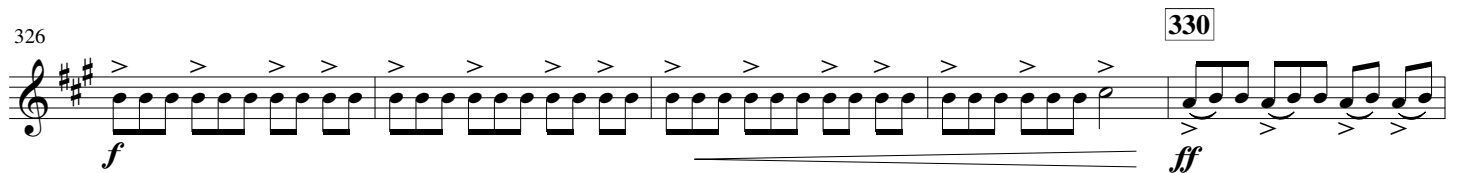
315



321



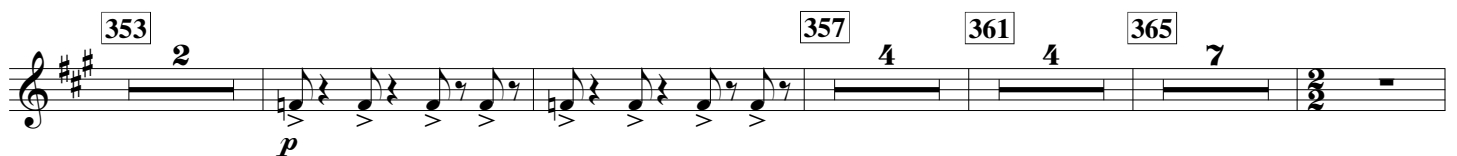
326

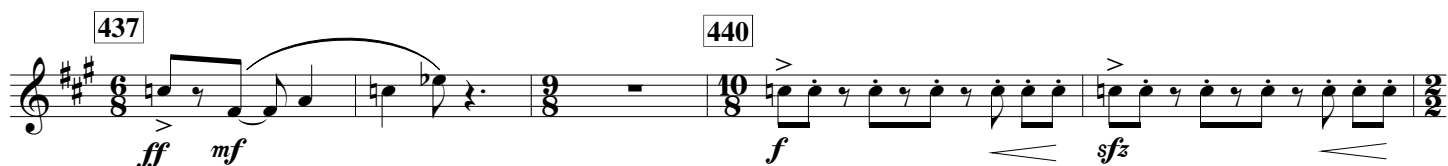
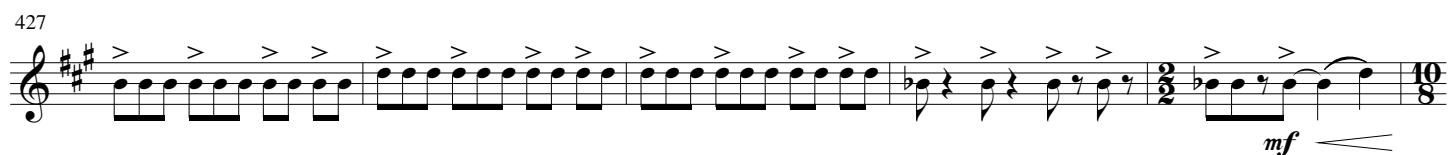
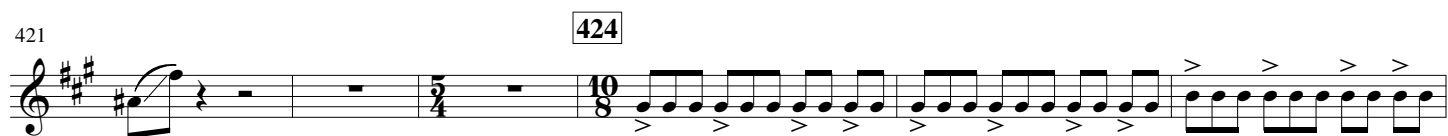
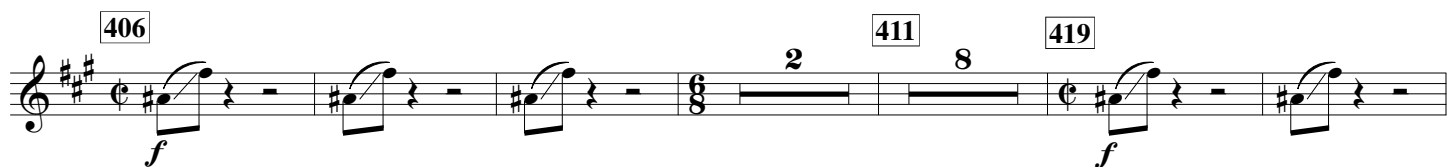
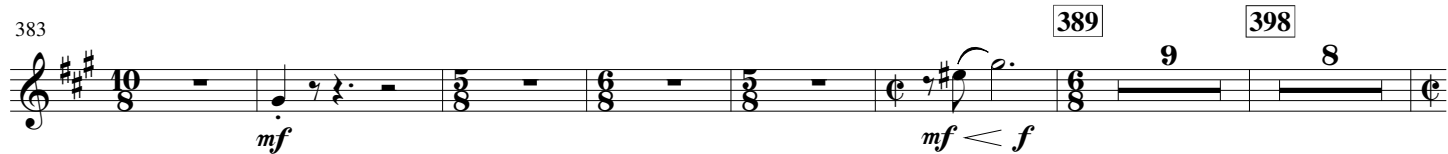
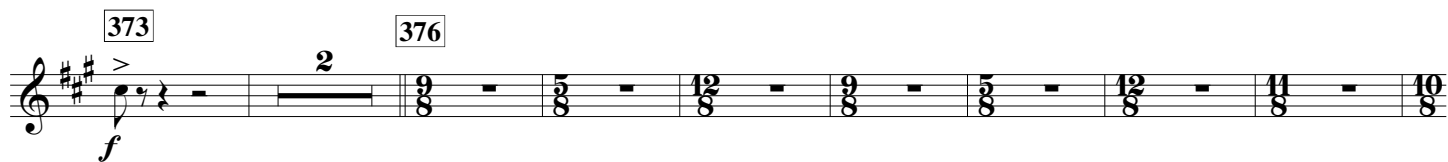


331



343





460

465

*p sub e molto cresc. ff*

467

469