

Arrangement dedicated to Alina & Eva
4 of Sunrise Avenue's all-time greatest hits

Sunrise Avenue

Wind Band

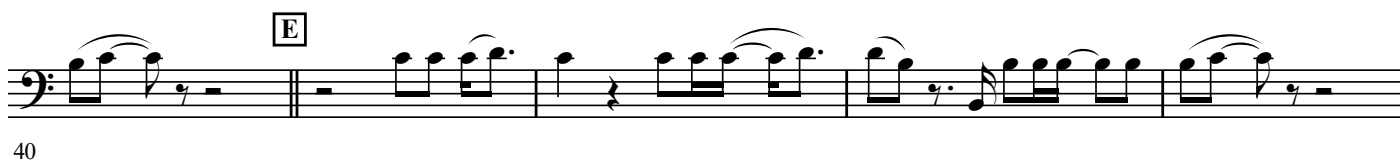
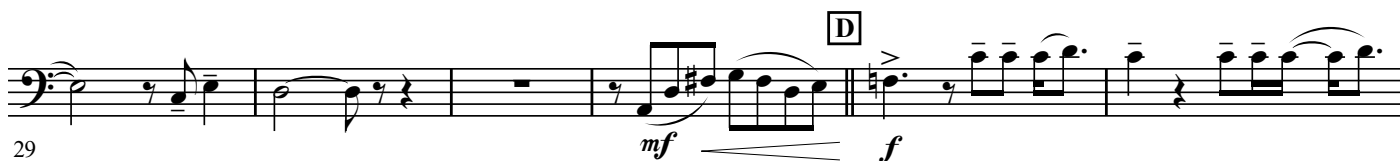
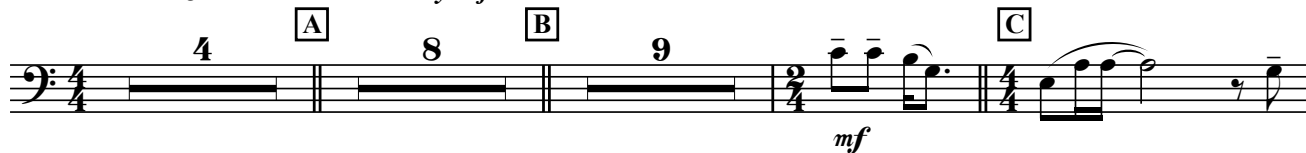
Samu HABER - Jukka BACKLUND -
Maria Jane SMITH - Victor THELL -

Wayne HECTOR

arr. Roland SMEETS

1st & 2nd B \flat Euphoniums

Andante $\text{♩} = 84$ "Welcome to my Life"



Allegro $\text{♩} = 138$ "Hollywood Hills"

50 **[F]** **3** **[G]** *mf*

This block contains measures 50 through 56. It begins with a treble clef and a 4/4 time signature. Measure 50 starts with a triplet of eighth notes (F, G, A) marked with a '3' and a box 'F'. The melody continues with eighth and sixteenth notes. Measure 56 ends with a double bar line. The dynamic *mf* is indicated below measure 50.

57 *mf*

This block contains measures 57 through 61. The melody continues with eighth and sixteenth notes. Measure 61 ends with a double bar line. The dynamic *mf* is indicated below measure 57.

62 **[H]**

This block contains measures 62 through 66. The melody continues with eighth and sixteenth notes. Measure 66 ends with a double bar line. A box 'H' is placed above measure 62.

67 **[I]** *mf*

This block contains measures 67 through 72. It features some chords marked with accents (>) and box 'I' above measure 68. The melody continues with eighth and sixteenth notes. Measure 72 ends with a double bar line. The dynamic *mf* is indicated below measure 67.

73 **[J]** *f*

This block contains measures 73 through 78. The melody continues with eighth and sixteenth notes. Measure 78 ends with a double bar line. A box 'J' is placed above measure 77. The dynamic *f* is indicated below measure 73.

79 **[K]** *f*

This block contains measures 79 through 84. It includes a triplet of eighth notes marked with an '8' and box 'K' above measure 80. The melody continues with eighth and sixteenth notes. Measure 84 ends with a double bar line. The dynamic *f* is indicated below measure 79.

85 **[L]** *f*

This block contains measures 85 through 91. It features a triplet of eighth notes marked with a '2' and box 'L' above measure 86. The melody continues with eighth and sixteenth notes. Measure 91 ends with a double bar line. The dynamic *f* is indicated below measure 85.

92 **[M]** *f*

This block contains measures 92 through 96. The melody continues with eighth and sixteenth notes. Measure 96 ends with a double bar line. A box 'M' is placed above measure 95. The dynamic *f* is indicated below measure 92.

97 *f*

This block contains measures 97 through 101. The melody continues with eighth and sixteenth notes. Measure 101 ends with a double bar line. The dynamic *f* is indicated below measure 97.

102

This block contains measures 102 through 106. The melody continues with eighth and sixteenth notes. Measure 106 ends with a double bar line.

Moderato $\text{♩} = 104$ "I help you hate me"

107 **[N]** *f*

This block contains measures 107 through 111. It begins with a treble clef and a 4/4 time signature. Measure 107 starts with a triplet of eighth notes (F, G, A) marked with a '3' and a box 'N'. The melody continues with eighth and sixteenth notes. Measure 111 ends with a double bar line. The dynamic *f* is indicated below measure 107.

114 *f*

135 *f*

142

147 *mp*

Andante ♩ = 84 "Nothing is over"

157 *mp*

163 *pp* *f*

169

173 *f*

178 *f*

182 *rit.*

Allegro ♩ = 138 "Hollywood Hills" (rep.)

188 *f*

194