

THE BRIDGE

B \flat Tuba

Hardy MERTENS

Fast 1 1 player

16 8

mf 3 3 3 3 3

2 All

5

ff *p* *ff*

39

p *f* *p* *f* *p* *ff*

3 4

15

p *ff* *p*

67

f

73

Speed up 5 **Very Fast** ♩ = ♩

79

ff

86

6

96

7 **Slow** ♩ = ♩

12

105

8 9 **Fast**

12 6

125

f

10

147

f

154

160

2

11

167

ff *pp* *f*

4

176

4

f

12

185

8 2

f

Speed up

13 Slow

199

ff *pp* *p* *f* *p*

2

207

220

f

p

15

12

16

2

239 *f*

247  ***ff***

255 *fff*

18 Fast 16

19

1 player

277

mf

3

3

3

3

3

5

20 All

293

ff *p* *ff*

300

p *f* *p* *f* *p* *ff* *p*

Musical notation for the bass line of 'The Rose Tree'. The key signature is one sharp (F#). The notation includes a repeat sign with first and second endings. The first ending is marked with a '5' above the staff. The second ending is also marked with a '5' above the staff. The measure numbers 22 and 23 are indicated above the staff.

4.

- B♭ Tuba -

23



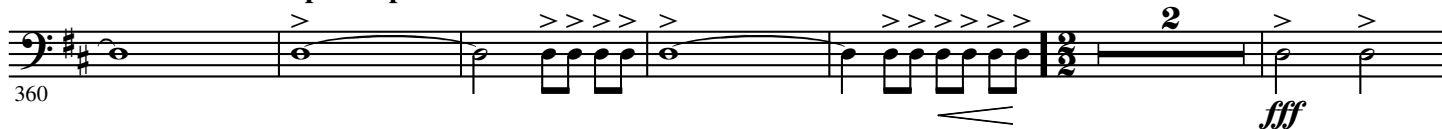
24



Speed up

25

Very Fast ♩ = ♩



Slow Down

