

# THE BRIDGE

B $\flat$  Trombone 1

Hardy MERTENS

Fast

1

8

9

mf

24

ff

p

ff

39

p

f

p

f

p

ff

47

p

ff

mf

55

8

p

f

70

Speed up

5

Very Fast

12

ff

ff

3

3

3

6

96

3

3

3

11

3

3

3

3

3

3

3

3

3

7

Slow

12

8

12

9

Fast

6

111

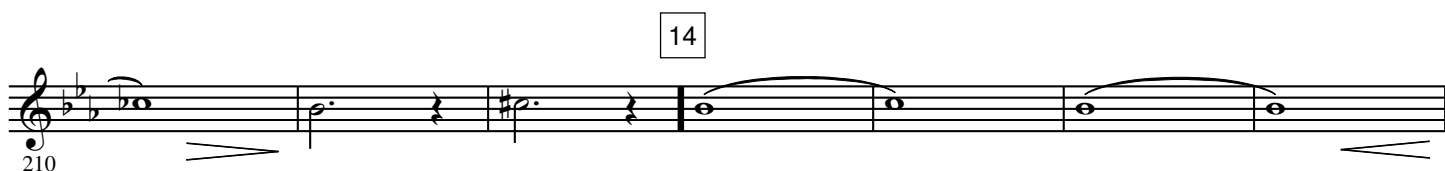
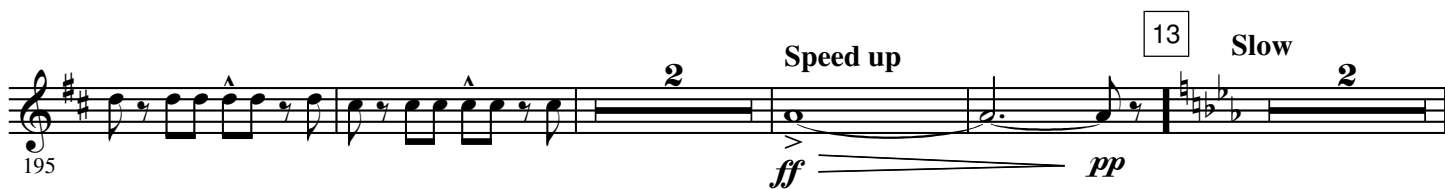
3

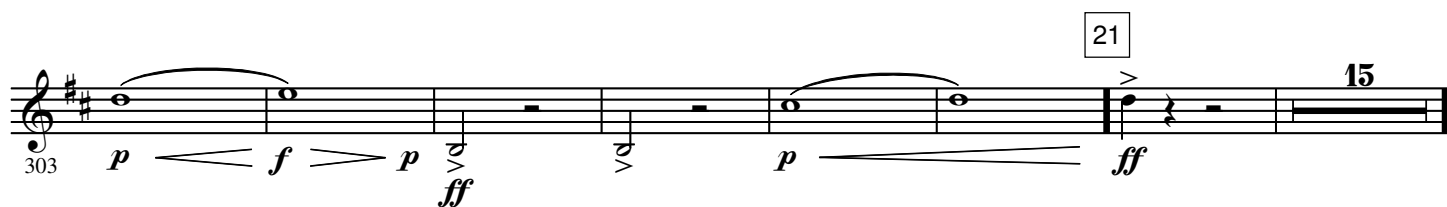
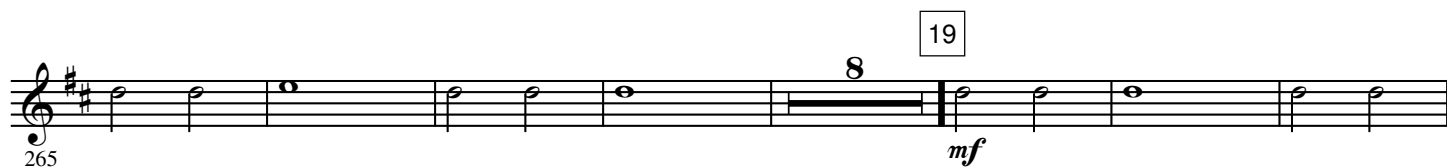
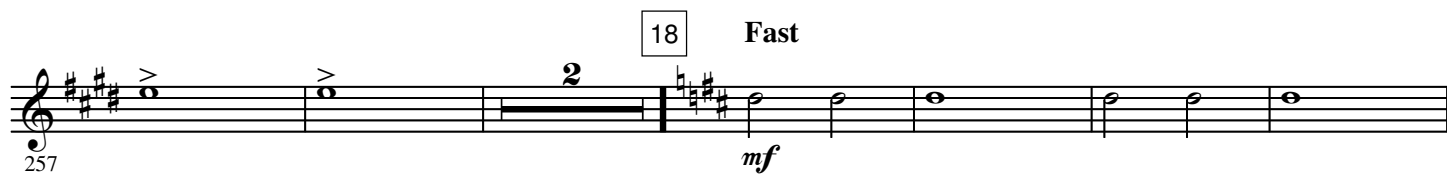
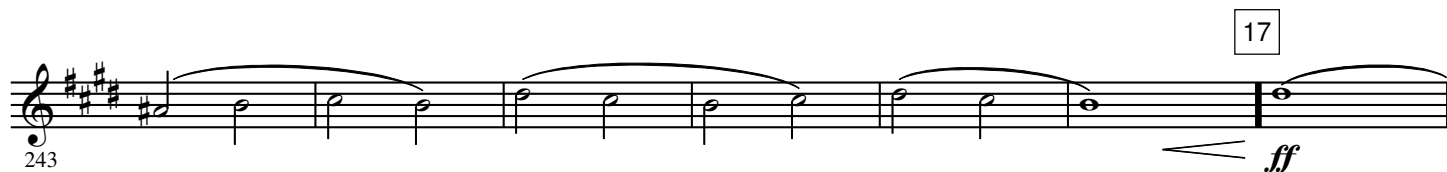
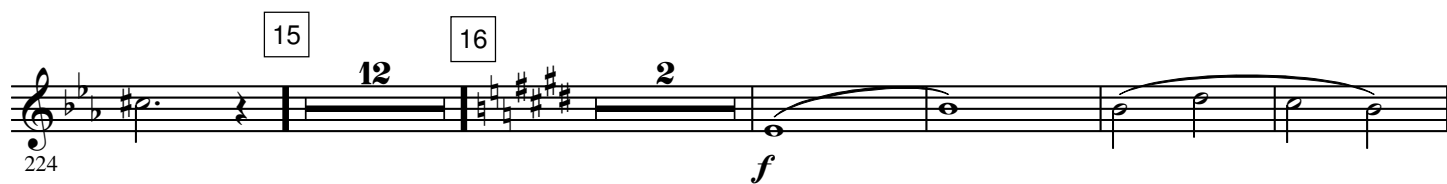
3

3

3

3





22 8



325 *p*

23



340 *mf*



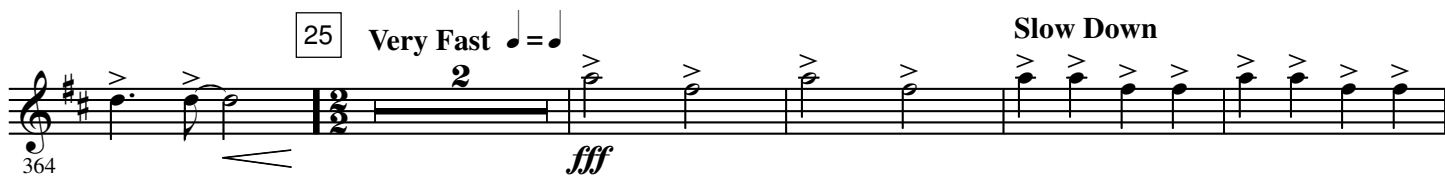
348

24 Speed up

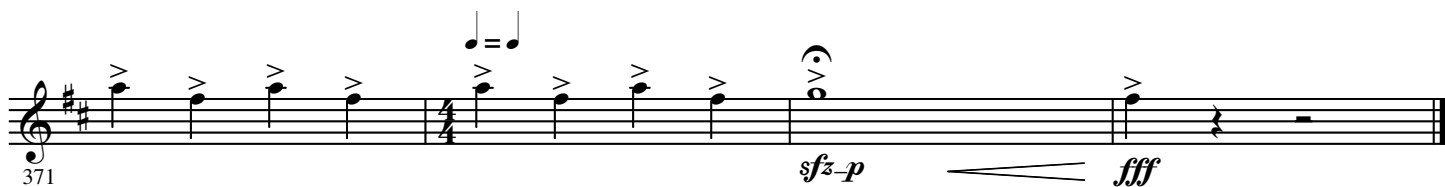


356 *ff*

25 Very Fast 2 Slow Down



364 *fff*



371 *sfz-p* *fff*