

Overture to a pops concert

Henry MANCINI

Arr. José SCHYNS

B \flat Bass 

Overture to a pops concert

B \flat Bass

Henry MANCINI

Arr. José SCHYNS

$\text{♩} = \pm 80$

1 *f*

6

11 *mf* *p*

18 *f*

25

30 *p*

39

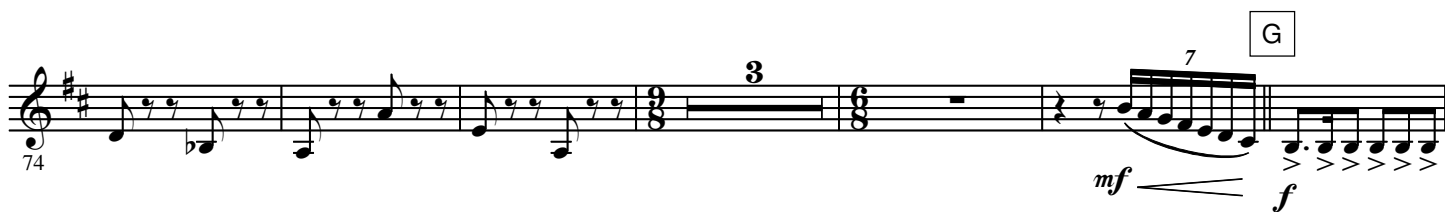
46 *mf* *p*

A

B

C

D



4.

- B \flat Bass -

M

131 *p* *f*

N

137

142

O

146

151 *ff*

158