

# **Overture to a pops concert**

**Henry MANCINI**

Arr. José SCHYNS

**E $\flat$  Bass** 

# Overture to a pops concert

E♭ Bass

Henry MANCINI

Arr. José SCHYNS

$\text{♩} = \pm 80$

1 *f*

6

A

11 *mf* *p*

18 *f* B

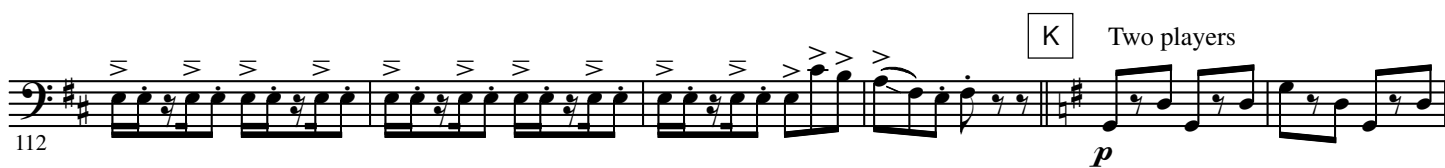
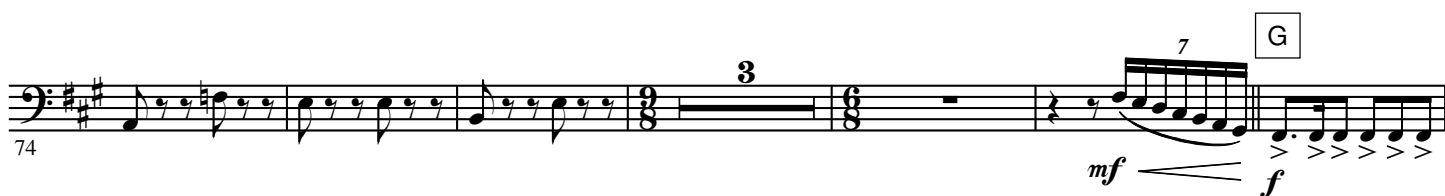
25

30 *p* C

39

D

46 *mf* *p*



M

131 *p* *f*

N

137

142

O

146

151 *ff*

158