

# Pikes Peak

## 1. COG RAILROAD

Trombone 2 in B $\flat$  B C

Adam GORB

**Allegro Moderato** ♩ = 80

**1** **2** **10** **2** Cue Horn 4 Straight mutes

*mf* *p*

19

**3** **2** **4** **4** **3** **4**

*f*

**4** **3** Cue Horn 4 **3** **5**

*mf* *p*

45 **8** *gliss.* **6**

*p*

57 **7**

*p* *f* *f*

63

senza sord. **8** **3**

*f*

Trombone 2 in B $\flat$  B C

77 9

*f* *f* *fp* *p*

83 10

*p*

93

*pp* *p* *pp*

11 101

*pp* *p*

12 114

*ppp* con sord.

## 2. CLIMB DANCE

**Presto**  $\text{♩} = 112 - 120$   
senza sord.

125

*f*

135

*f*

13 143

*f*

14 150

*f*

169 15

Staff 169-177: Bass clef, key of B major (two sharps). Measures 169-177. Rehearsal mark 15. Rhythmic values: 3/4, 2/4, 2/2, 3/4, 2/4, 2/2, 3/4, 2/4, 2/2. Accents (>) are present on notes in measures 169, 170, 171, 172, 173, 174, 175, 176, and 177.

178 16

Staff 178-187: Bass clef, key of B major. Measures 178-187. Rehearsal mark 16. Rhythmic values: 2/2, 3/4, 2/2, 2/2, 3/4, 2/2, 5/4, 2/2, 2/2. A five-measure rest (5) is in measure 186. Accents (>) are present on notes in measures 178, 179, 180, 181, 182, 183, 184, 185, and 187.

190 17

Staff 190-199: Bass clef, key of B major. Measures 190-199. Rehearsal mark 17. Rhythmic values: 3/4, 2/4, 2/2, 3/4, 2/2, 3/4, 2/2, 3/4, 2/2, 2/4. Two-measure (2) and three-measure (3) rests are in measures 192 and 195 respectively. Accents (>) are present on notes in measures 190, 191, 192, 193, 194, 195, 196, 197, 198, and 199.

200 18

Staff 200-214: Bass clef, key of B major. Measures 200-214. Rehearsal mark 18. Rhythmic values: 2/2, 2/4, 3/4, 2/2, 2/2, 2/2, 3/4, 2/4, 2/4, 3/4. Five-measure (5), three-measure (3), and two-measure (2) rests are in measures 200, 203, and 206 respectively. Accents (>) are present on notes in measures 200, 201, 202, 203, 204, 205, 206, 207, 208, 209, 210, 211, 212, 213, and 214.

215 19

Staff 215-222: Bass clef, key of B major. Measures 215-222. Rehearsal mark 19. Rhythmic values: 3/4, 2/4, 2/2, 3/4, 2/2, 3/4, 2/2, 2/2, 2/2, 2/2. A three-measure (3) rest is in measure 216. Dynamics: *f* (measure 217), *p* (measure 218), *mf* (measure 222). A crescendo hairpin is between measures 217 and 218, and a decrescendo hairpin is between measures 218 and 222. Accents (>) are present on notes in measures 215, 216, 217, 218, 219, 220, 221, and 222.

223 20

Staff 223-231: Bass clef, key of B major. Measures 223-231. Rehearsal mark 20. Rhythmic values: 2/2, 2/2, 2/2, 2/2, 3/4, 2/4, 2/2, 2/2, 2/2, 2/2. A two-measure (2) rest is in measure 226. Dynamics: *f* (measure 226), *fp* (measure 231). Accents (>) are present on notes in measures 223, 224, 225, 226, 227, 228, 229, 230, and 231.

232 21

Staff 232-238: Bass clef, key of B major. Measures 232-238. Rehearsal mark 21. Rhythmic values: 2/2, 2/2, 2/2, 2/2, 2/2, 2/2, 2/2, 2/2. Dynamics: *f* (measure 232), *fp* (measure 235), *ffp* (measure 238). Crescendo hairpins are between measures 232-235 and 235-238. Accents (>) are present on notes in measures 232, 233, 234, 235, 236, 237, and 238.

239 21

Staff 239-246: Bass clef, key of B major. Measures 239-246. Rehearsal mark 21. Rhythmic values: 2/2, 2/2, 2/2, 2/2, 2/2, 2/2, 2/2, 2/2, 2/2, 2/2. Dynamics: *f* (measure 239), *ff* (measure 246). A crescendo hairpin is between measures 239 and 246. Accents (>) are present on notes in measures 239, 240, 241, 242, 243, 244, 245, and 246.

247

Staff 247-253: Bass clef, key of B major. Measures 247-253. Rhythmic values: 2/2, 2/2, 2/2, 2/2, 2/2, 2/2, 2/2, 2/2. A two-measure (2) rest is in measure 250. Accents (>) are present on notes in measures 247, 248, 249, 250, 251, 252, and 253.

254

Staff 254-258: Bass clef, key of B major. Measures 254-258. Rhythmic values: 2/2, 2/2, 2/2, 2/2, 2/2, 2/2, 2/2, 2/2. Accents (>) are present on notes in measures 254, 255, 256, 257, and 258. The piece ends with a double bar line in measure 258.

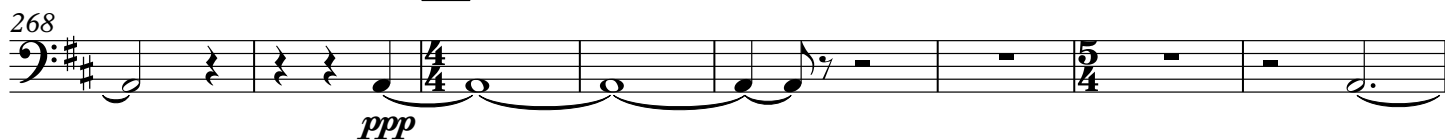
Trombone 2 in B $\flat$  B C

In Memory of David Maslanka 1943 - 2017

## 3. SUMMIT

Andante  $\text{♩} = 80$   
con sord. cup

22



23

24



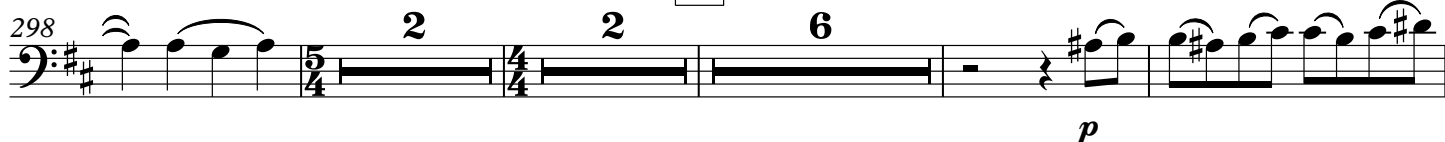
25



26



27



28

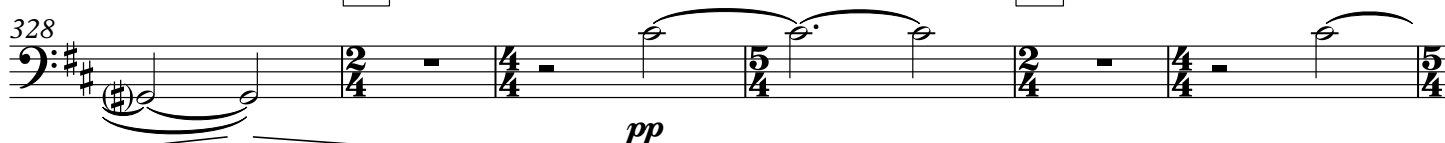
29



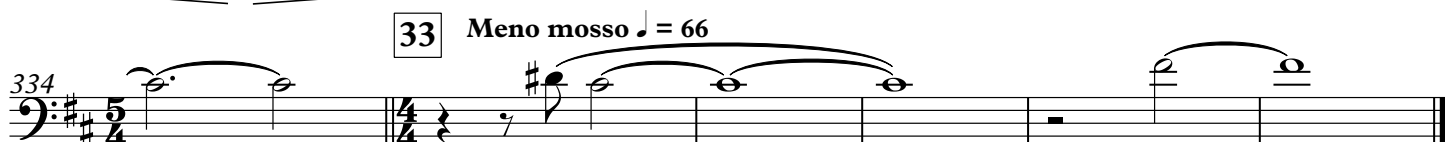
30



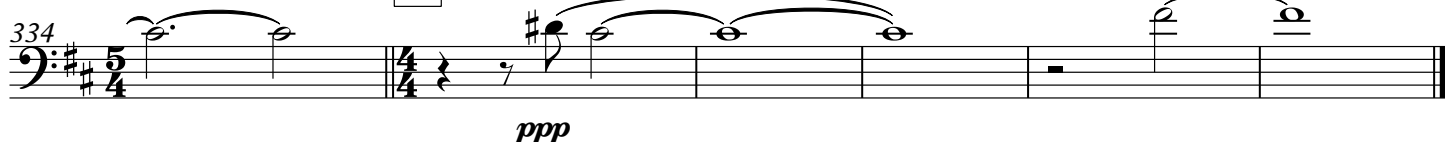
31



32



33

Meno mosso  $\text{♩} = 66$ 

ppp