

# Pikes Peak

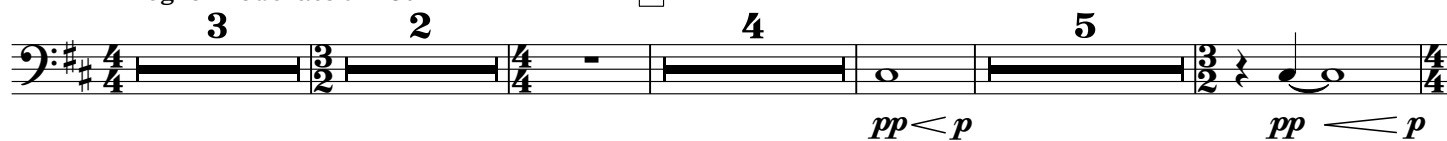
## 1. COG RAILROAD

Tuba in B $\flat$  B C

Adam GORB

Allegro Moderato  $\text{♩} = 80$

1



2

3



4



5



6



7



8



Tuba in B $\flat$  B C

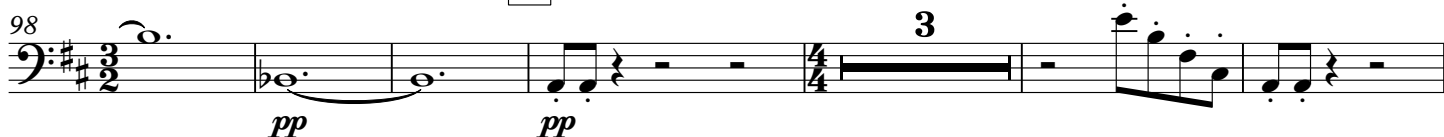
9



10



11



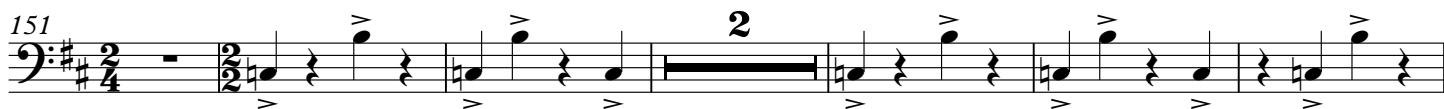
12



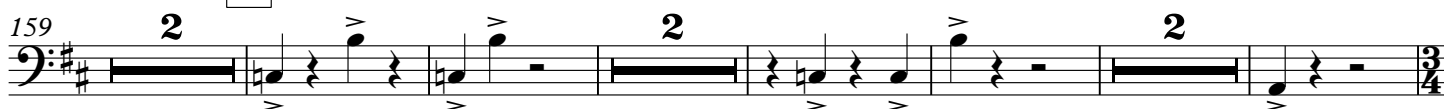
## 2. CLIMB DANCE

Presto  $\text{♩} = 112 - 120$ 

13



14



15



178 16

Staff 178-187: Bass clef, key of B major (two sharps). Measures 178-187. Measure 178 has a 3/2 time signature. Measures 179-180 have a 3/4 time signature. Measures 181-182 have a 3/2 time signature. Measures 183-184 have a 3/4 time signature. Measures 185-186 have a 3/2 time signature. Measure 187 has a 3/4 time signature. There are triplets in measures 181 and 185, and a double bar line in measure 186.

188

Staff 188-196: Bass clef, key of B major. Measures 188-196. Measure 188 has a 3/2 time signature. Measures 189-190 have a 3/4 time signature. Measures 191-192 have a 3/2 time signature. Measures 193-194 have a 3/4 time signature. Measures 195-196 have a 3/2 time signature. There is a double bar line in measure 195.

197 17

Staff 197-203: Bass clef, key of B major. Measures 197-203. Measure 197 has a 3/2 time signature. Measures 198-199 have a 3/4 time signature. Measures 200-201 have a 3/2 time signature. Measures 202-203 have a 3/4 time signature. Dynamics: *f* in measure 197, *p* in measure 200.

204 18

Staff 204-210: Bass clef, key of B major. Measures 204-210. Measure 204 has a 3/4 time signature. Measures 205-206 have a 3/4 time signature. Measures 207-208 have a 3/2 time signature. Measures 209-210 have a 3/4 time signature. Dynamics: *f* in measure 205, *p* in measure 209, *mf* in measure 210.

211

Staff 211-220: Bass clef, key of B major. Measures 211-220. Measure 211 has a 3/4 time signature. Measures 212-213 have a 3/4 time signature. Measures 214-215 have a 3/2 time signature. Measures 216-217 have a 3/4 time signature. Measures 218-219 have a 3/2 time signature. Measure 220 has a 3/4 time signature. Dynamics: *fp* in measure 218, *f* in measure 219, *fp* in measure 220.

220 19

Staff 220-227: Bass clef, key of B major. Measures 220-227. Measure 220 has a 3/2 time signature. Measures 221-222 have a 3/2 time signature. Measures 223-224 have a 3/4 time signature. Measures 225-226 have a 3/4 time signature. Measure 227 has a 3/4 time signature. Dynamics: *f* in measure 220, *p* in measure 221, *mf* in measure 223, *f* in measure 227.

228 20

Staff 228-238: Bass clef, key of B major. Measures 228-238. Measure 228 has a 3/2 time signature. Measures 229-230 have a 3/2 time signature. Measures 231-232 have a 3/4 time signature. Measures 233-234 have a 3/2 time signature. Measures 235-236 have a 3/2 time signature. Measure 237 has a 3/4 time signature. Measure 238 has a 3/4 time signature. Dynamics: *f* in measure 233.

239

Staff 239-244: Bass clef, key of B major. Measures 239-244. Measure 239 has a 3/4 time signature. Measures 240-241 have a 3/4 time signature. Measures 242-243 have a 3/4 time signature. Measure 244 has a 3/4 time signature. Dynamics: *f* in measure 239. There is a triplet in measure 244.

245 21

Staff 245-252: Bass clef, key of B major. Measures 245-252. Measure 245 has a 3/4 time signature. Measures 246-247 have a 3/4 time signature. Measures 248-249 have a 3/2 time signature. Measures 250-251 have a 3/2 time signature. Measure 252 has a 3/4 time signature. Dynamics: *ff* in measure 245. There are triplets in measures 245 and 246, and a double bar line in measure 250.

253

Staff 253-258: Bass clef, key of B major. Measures 253-258. Measure 253 has a 3/2 time signature. Measures 254-255 have a 3/2 time signature. Measures 256-257 have a 3/2 time signature. Measure 258 has a 3/2 time signature. Dynamics: *fff* in measure 258.

Tuba in B $\flat$  B C  
In Memory of David Maslanka 1943 - 2017

### 3. SUMMIT

Andante  $\text{♩} = 80$

22

23

24

276

$p$  6  $pp$

25

282

$p$  6  $pp$

26

290

3

$p$  6  $pp$   $p$  3

27

299

$p$  6  $ppp$   $p$  6  $ppp$

306

$p$  6  $ppp$   $p$  6 3  $ppp$

28

311

$p$  3 3 3  $ppp$

29

30

318

3

$pp$

31

32

327

$p$  6  $ppp$   $p$  6

33

Meno mosso  $\text{♩} = 66$

333

$ppp$  2 3  $pp$