

Pikes Peak

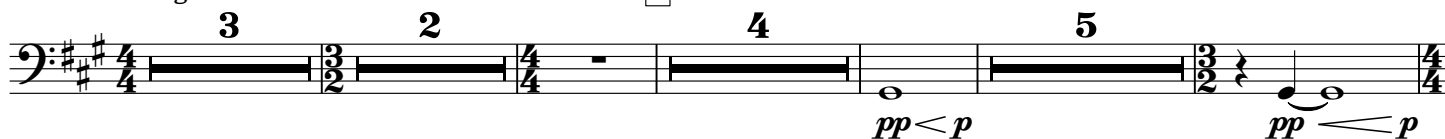
1. COG RAILROAD

Tuba in E♭ B C

Adam GORB

Allegro Moderato ♩ = 80

1



2

3



4



5



6



7

Play lower notes
if just 1 Tuba

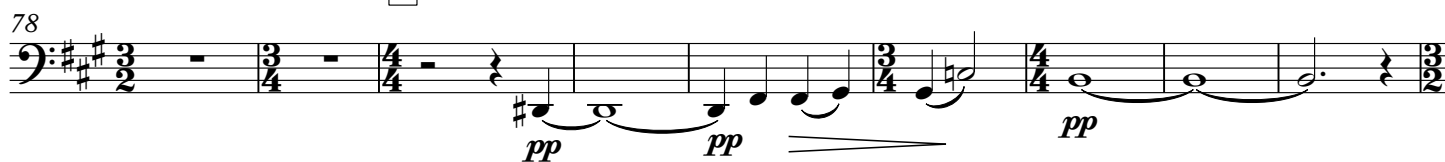


8



Tuba in Eb B C

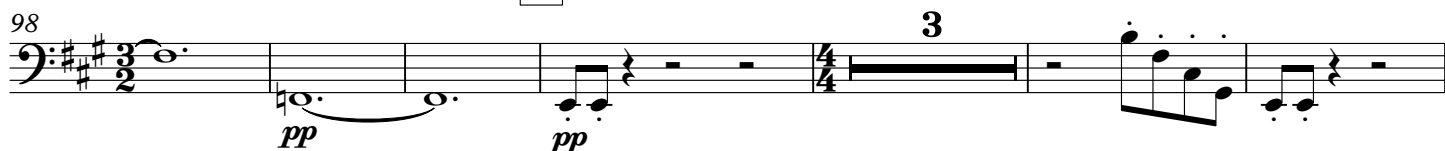
9



10



11



12

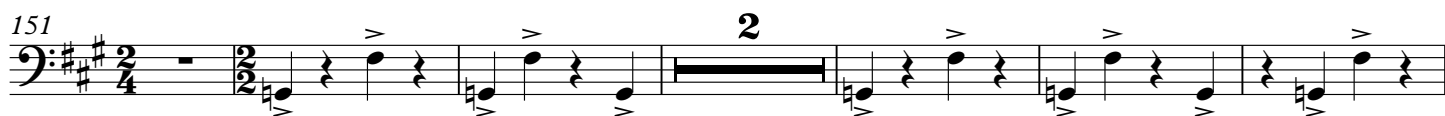


2. CLIMB DANCE

Presto ♩ = 112 - 120

13

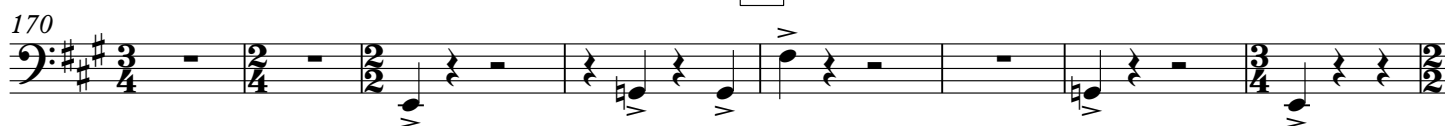
senza sord.



14



15



Tuba in E♭ B C

178

16

3

2

[illegible][illegible]

204

18

f *p* *mf*

211

The image shows a musical score for the bass line of 'The Rose Tree'. It begins with a treble clef and a key signature of one sharp (F#). The tempo is marked 'Allegretto' and the time signature is 3/4. The score consists of 211 measures. The melody is written in a single line, featuring a variety of note values including eighth, sixteenth, and thirty-second notes, as well as rests. The piece concludes with a final cadence marked 'fp' (fortissimo piano) and a fermata. The score is presented in a clean, professional layout with a white background and black notation.

220 19

f > *p* *mf* *f*

228

[illegible][illegible]

Tuba in E \flat B C
In Memory of David Maslanka 1943 - 2017

3. SUMMIT

Andante $\text{♩} = 80$

22

23

24

25

26

27

28

29

30

31

32

33

Meno mosso $\text{♩} = 66$