

Pikes Peak

1. COG RAILROAD

Tuba in E \flat

Adam GORB

Allegro Moderato $\text{♩} = 80$

1

3 2 4 5

$pp < p$ $pp < p$

18

2 3

7 2 4

$p < mf$

34

4

p mf

41

5

3

fp p

51

6

p

59

7

Play lower notes
if just 1 Tuba

f

66

f

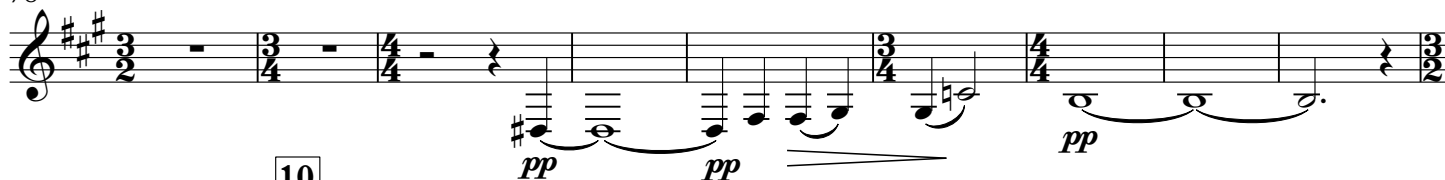
70

8

4

78

9



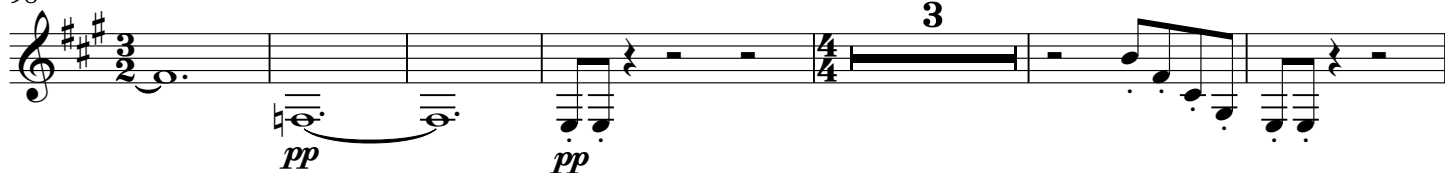
87

10



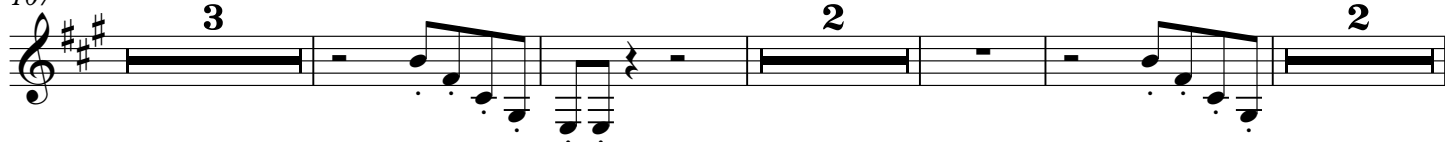
98

11



107

12



118

con sord.



2. CLIMB DANCE

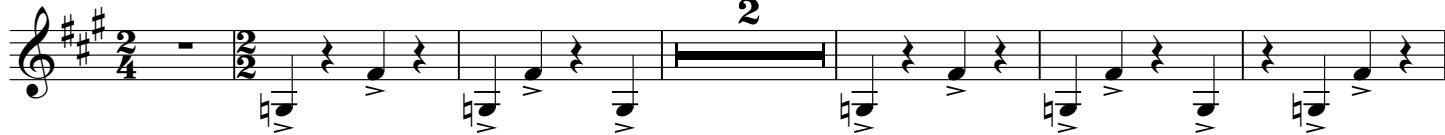
Presto ♩ = 112 - 120

13

senza sord.

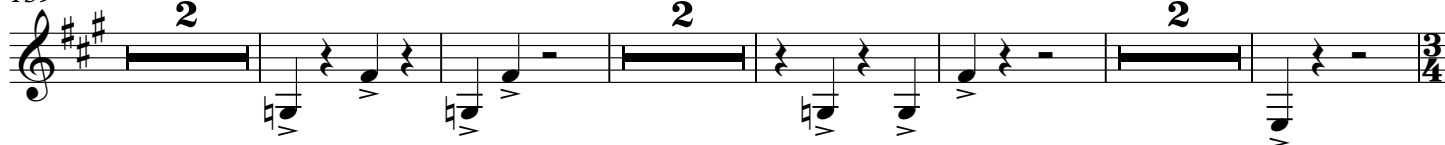


151



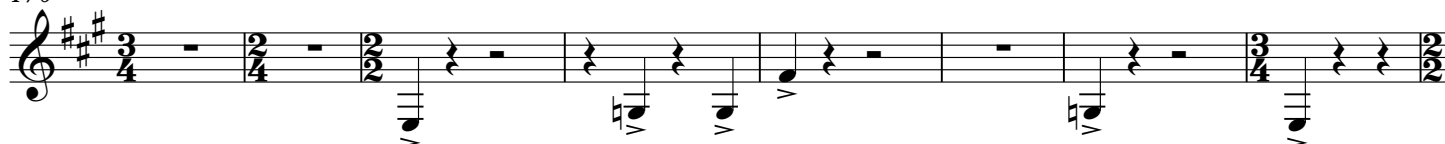
159

14



170

15



[illegible]

Tuba in Eb
In Memory of David Maslanka 1943 - 2017

3. SUMMIT

Andante ♩ = 80

22

23

24

25

26

27

28

29

30

31

32

33

Meno mosso ♩ = 66

p *pp* *ppp*