

# Pikes Peak

## 1. COG RAILROAD

Horn in E $\flat$  1

Adam GORB

Allegro Moderato  $\text{♩} = 80$

2

1

2

3

4

5

6

7

*p*

*p*

*p*

*p*

*p*

*p*

*p*

*mf*

*mf*

*fp*

*p*

*p*

*p*

*p*

*f*

*con sord.*

66



71

senza sord.

8



75



79

9

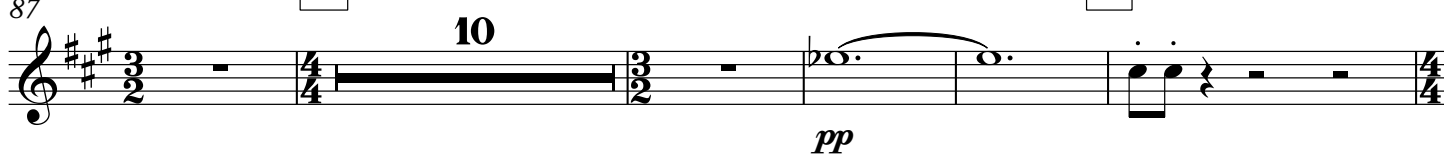


87

10

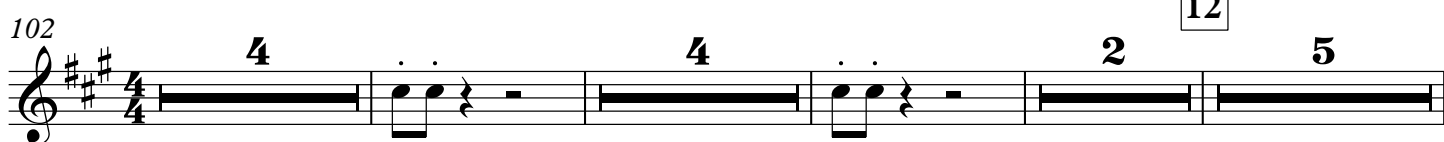
10

11



102

12



119

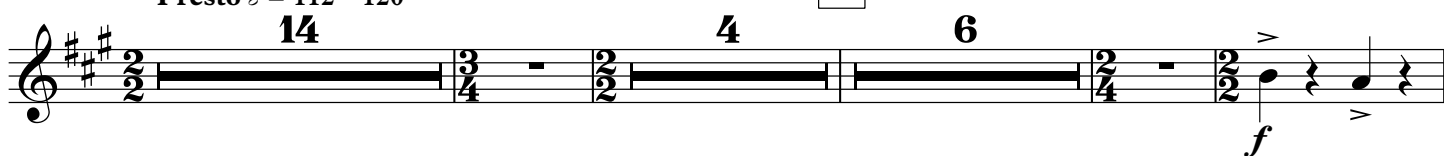
2



## 2. CLIMB DANCE

Presto  $\text{♩} = 112 - 120$ 

13



153

14



Horn in E $\flat$  1

162

FROM MELODY

2

3

3/4

2/4

2/2

173

15

15

181

16

2

Example 16 shows measures 181-188. The key signature is three sharps (F#, C#, G#). The notation includes various note values, rests, and dynamic markings such as accents (>) and a forte (f) marking. A double bar line is present in measure 185.

189

189

196

17

5

3/4

2/2

2/2

3/4

3/4

208 18

*fp* *mf* *fp*

216

19

3

$\text{fp}$   $f$   $p$

226

5 3

*ff*

238

20

6

*f*

21

*ff*

2

251

256

Horn in E $\flat$  1*In Memory of David Maslanka 1943 - 2017*

## 3. SUMMIT

Andante  $\text{♩} = 80$ 