

L'apprenti sorcier

B \flat Euphonium

Paul DUKAS

Transcribed by José SCHYNS

Assez lent $\text{♩} = 90 \text{ à } 103$ 1 6 Vif $\text{♩} = 168$

2 1er mouvement $\text{♩} = 90 \text{ à } 103$ 3 Vif $\text{♩} = 168$

4 4

5 Vif $\text{♩} = 116$ 30

6 7 8 9 10 11 12 13

27 18 12 6 2 2

f *p sub.* *f* *sf* *p cresc.* *mf* *p cresc.* *mf* *cresc.* *f* *mf* *sf*

(Turn fast)

176 *sf* *p* *p* **14**

184 *p* **15**

192 *cresc.* *f* **16** 2

201 *p* *cresc.*

208 *f* *sfz* **17**

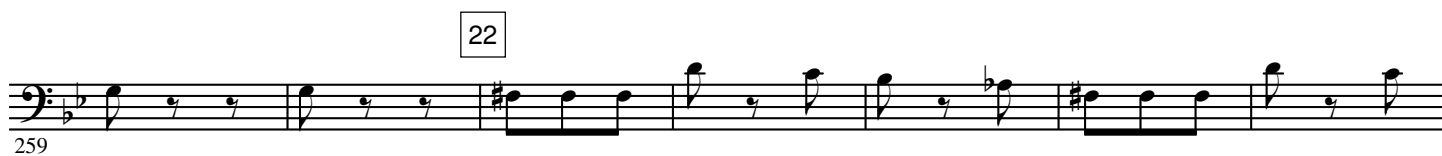
215 *sfz* *più f* *sempre cresc.* **18**

223 *sf* **19** poco animando

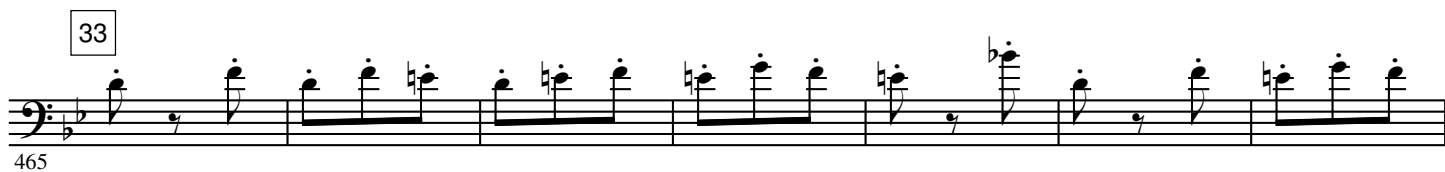
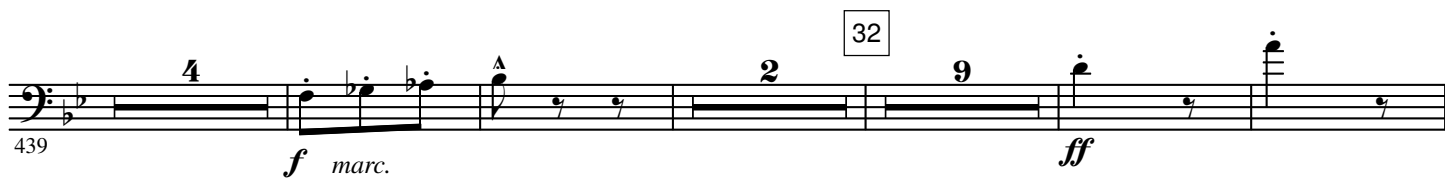
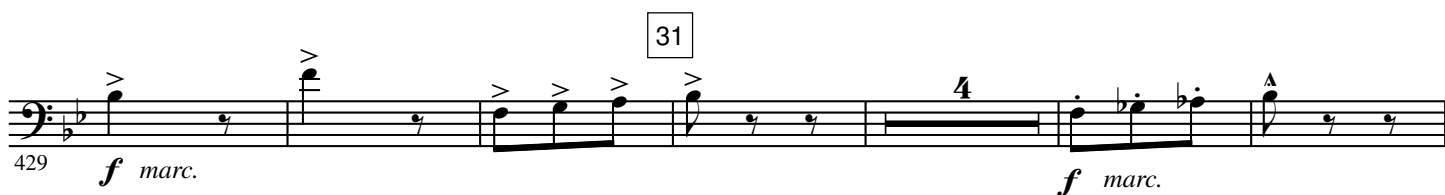
230 *f* *sf* *f* *sf* *sf*

237 *sf* *sf* *sf* *sf* **20** più animando

244 *sf* *sf* *sf* *sf* *f* **21** Au Mouvt



A tempo



472 34

480 *sf* *sf*

Detailed description: This musical staff contains measures 472 to 480. It begins with a half note G2, followed by a quarter rest, then a half note F2, a quarter rest, and a half note E2. A slur covers measures 474 and 475, which contain half notes D2 and C2 respectively. Measure 476 has a half note B1, followed by a quarter rest, then a half note A1, a quarter rest, and a half note G1. A slur covers measures 478 and 479, which contain half notes F1 and E1. Measure 480 is a whole rest. Dynamics *sf* are marked at the beginning and end of the staff.

480 35 poco animando 11

488 *sf* *f*

Detailed description: This musical staff contains measures 480 to 488. It begins with a half note G2, followed by a quarter rest, then a half note F2, a quarter rest, and a half note E2. A slur covers measures 482 and 483, which contain half notes D2 and C2 respectively. Measure 484 has a half note B1, followed by a quarter rest, then a half note A1, a quarter rest, and a half note G1. A slur covers measures 486 and 487, which contain half notes F1 and E1. Measure 488 is a whole rest. Dynamics *sf* and *f* are marked at the beginning and end of the staff. The tempo marking 'poco animando' and the number '11' are also present.

498 36 sec 2 2

506 *f* *ff*

Detailed description: This musical staff contains measures 498 to 506. It begins with a half note G2, followed by a quarter rest, then a half note F2, a quarter rest, and a half note E2. A slur covers measures 500 and 501, which contain half notes D2 and C2 respectively. Measure 502 has a half note B1, followed by a quarter rest, then a half note A1, a quarter rest, and a half note G1. A slur covers measures 504 and 505, which contain half notes F1 and E1. Measure 506 is a whole rest. Dynamics *f* and *ff* are marked at the beginning and end of the staff. The tempo marking 'sec' and the number '2' are also present.

507 2 2

Detailed description: This musical staff contains measures 507 to 515. It begins with a half note G2, followed by a quarter rest, then a half note F2, a quarter rest, and a half note E2. A slur covers measures 509 and 510, which contain half notes D2 and C2 respectively. Measure 511 has a half note B1, followed by a quarter rest, then a half note A1, a quarter rest, and a half note G1. A slur covers measures 513 and 514, which contain half notes F1 and E1. Measure 515 is a whole rest.

517 37 Plus animé ♩ = 120 sec

525 *ff* *ff* *ff*

Detailed description: This musical staff contains measures 517 to 525. It begins with a half note G2, followed by a quarter rest, then a half note F2, a quarter rest, and a half note E2. A slur covers measures 519 and 520, which contain half notes D2 and C2 respectively. Measure 521 has a half note B1, followed by a quarter rest, then a half note A1, a quarter rest, and a half note G1. A slur covers measures 523 and 524, which contain half notes F1 and E1. Measure 525 is a whole rest. Dynamics *ff* are marked at the beginning and end of the staff. The tempo marking 'Plus animé' and the tempo '♩ = 120' are also present.

524 *ff* très détaché *ff* *ff*

Detailed description: This musical staff contains measures 524 to 532. It begins with a half note G2, followed by a quarter rest, then a half note F2, a quarter rest, and a half note E2. A slur covers measures 526 and 527, which contain half notes D2 and C2 respectively. Measure 528 has a half note B1, followed by a quarter rest, then a half note A1, a quarter rest, and a half note G1. A slur covers measures 530 and 531, which contain half notes F1 and E1. Measure 532 is a whole rest. Dynamics *ff* are marked at the beginning and end of the staff. The tempo marking 'très détaché' is also present.

532 38 17 *ff* *f* cresc.

Detailed description: This musical staff contains measures 532 to 550. It begins with a half note G2, followed by a quarter rest, then a half note F2, a quarter rest, and a half note E2. A slur covers measures 534 and 535, which contain half notes D2 and C2 respectively. Measure 536 has a half note B1, followed by a quarter rest, then a half note A1, a quarter rest, and a half note G1. A slur covers measures 538 and 539, which contain half notes F1 and E1. Measure 540 is a whole rest. Dynamics *ff* and *f* are marked at the beginning and end of the staff. The number '17' is also present.

555 39 17 *ff* *f* cresc.

Detailed description: This musical staff contains measures 555 to 573. It begins with a half note G2, followed by a quarter rest, then a half note F2, a quarter rest, and a half note E2. A slur covers measures 557 and 558, which contain half notes D2 and C2 respectively. Measure 559 has a half note B1, followed by a quarter rest, then a half note A1, a quarter rest, and a half note G1. A slur covers measures 561 and 562, which contain half notes F1 and E1. Measure 563 is a whole rest. Dynamics *ff* and *f* are marked at the beginning and end of the staff. The number '17' is also present.

Toujours plus animé 2 *ff* *f* cresc.

579 *ff* *f* cresc.

Detailed description: This musical staff contains measures 579 to 587. It begins with a half note G2, followed by a quarter rest, then a half note F2, a quarter rest, and a half note E2. A slur covers measures 581 and 582, which contain half notes D2 and C2 respectively. Measure 583 has a half note B1, followed by a quarter rest, then a half note A1, a quarter rest, and a half note G1. A slur covers measures 585 and 586, which contain half notes F1 and E1. Measure 587 is a whole rest. Dynamics *ff* and *f* are marked at the beginning and end of the staff. The tempo marking 'Toujours plus animé' is also present.

588 2 5 *ff* *f* cresc. *ff*

Detailed description: This musical staff contains measures 588 to 596. It begins with a half note G2, followed by a quarter rest, then a half note F2, a quarter rest, and a half note E2. A slur covers measures 590 and 591, which contain half notes D2 and C2 respectively. Measure 592 has a half note B1, followed by a quarter rest, then a half note A1, a quarter rest, and a half note G1. A slur covers measures 594 and 595, which contain half notes F1 and E1. Measure 596 is a whole rest. Dynamics *ff* and *f* are marked at the beginning and end of the staff. The number '2' and '5' are also present.

Très vif $\text{♩} = 146$

sec



Très légèrement retenu

49

A tempo

$\text{♩} = 116$



50



51



52

Sans presser



53

En serrant

12



Plus animé