

E \flat Horn 2

Mémorial

Karol BEFFA

1.

Maestoso ♩ = 72

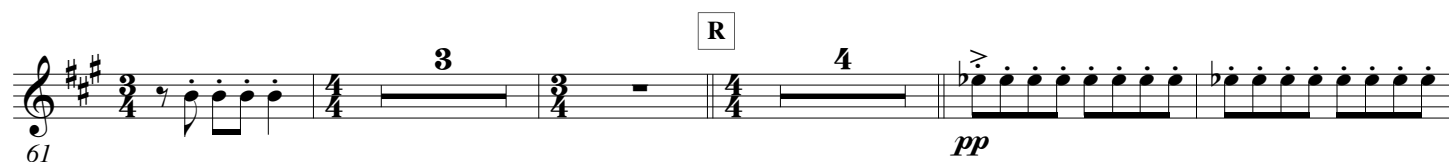
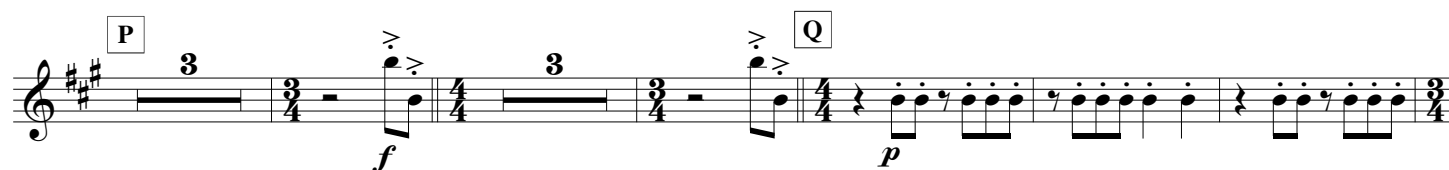
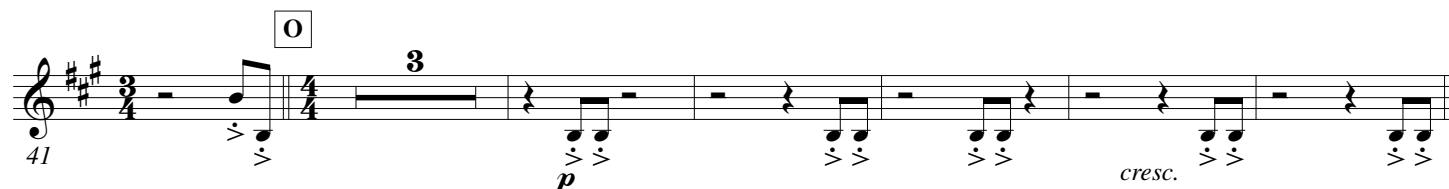
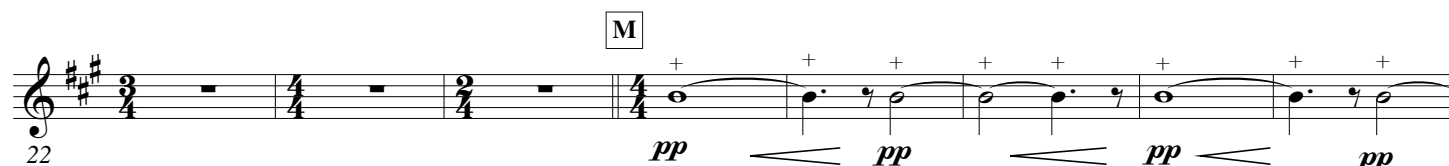
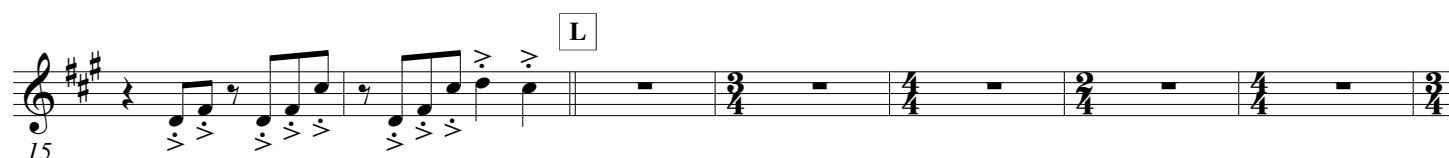
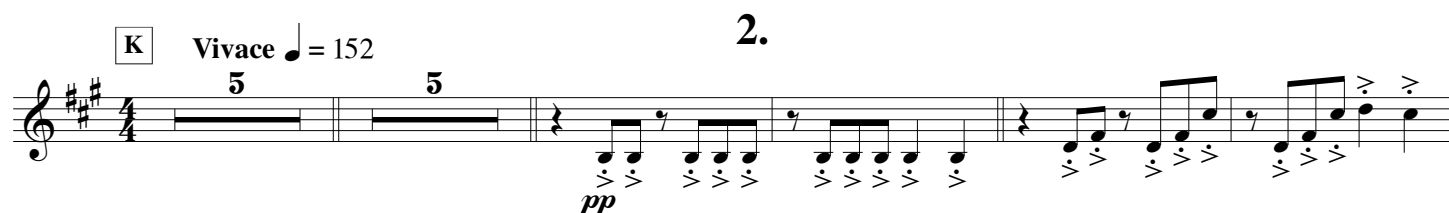
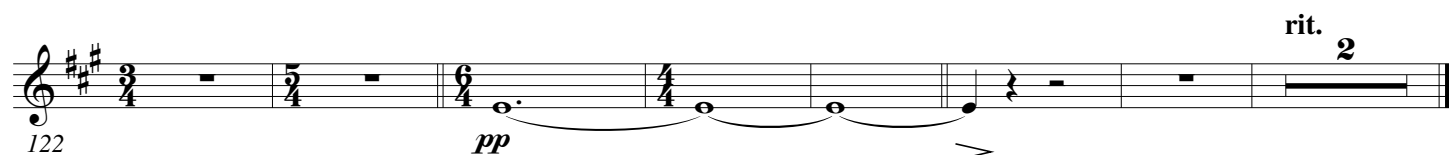
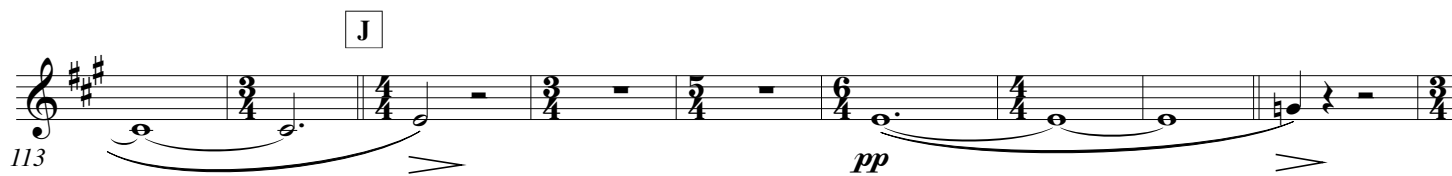
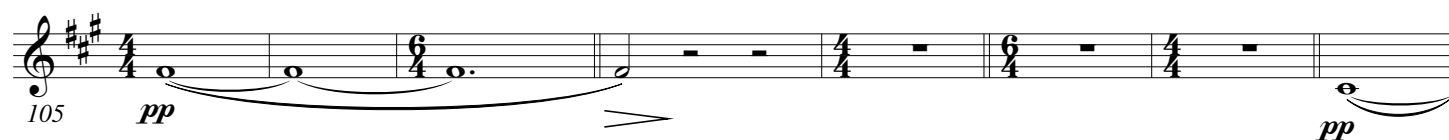
A **B** **Moderato** ♩ = 63

C **Ecstatic** ♩ = 92 **D** **Moderato** ♩ = 100

E **F** **Fluid** ♩ = 132 **Open**

G **Maestoso** ♩ = 72

H **I**



72

S

2

mf

79 *dim.* *p* **T** 5 *p* 2

The musical score for the piano introduction of 'U' is written for a single melodic line. It begins in 3/4 time with a key signature of three sharps (F#, C#, G#). The first measure is a whole rest. The second measure is a half note G#4 with an accent (>) and a fermata. The third measure is a whole rest. The fourth measure is a whole rest. The fifth measure is a whole rest. The sixth measure is a whole rest. The seventh measure is a whole rest. The eighth measure is a whole rest. The ninth measure is a whole rest. The tenth measure is a whole rest. The eleventh measure is a whole rest. The twelfth measure is a whole rest. The thirteenth measure is a whole rest. The fourteenth measure is a whole rest. The fifteenth measure is a whole rest. The sixteenth measure is a whole rest. The seventeenth measure is a whole rest. The eighteenth measure is a whole rest. The nineteenth measure is a whole rest. The twentieth measure is a whole rest. The twenty-first measure is a whole rest. The twenty-second measure is a whole rest. The twenty-third measure is a whole rest. The twenty-fourth measure is a whole rest. The twenty-fifth measure is a whole rest. The twenty-sixth measure is a whole rest. The twenty-seventh measure is a whole rest. The twenty-eighth measure is a whole rest. The twenty-ninth measure is a whole rest. The thirtieth measure is a whole rest. The thirty-first measure is a whole rest. The thirty-second measure is a whole rest. The thirty-third measure is a whole rest. The thirty-fourth measure is a whole rest. The thirty-fifth measure is a whole rest. The thirty-sixth measure is a whole rest. The thirty-seventh measure is a whole rest. The thirty-eighth measure is a whole rest. The thirty-ninth measure is a whole rest. The fortieth measure is a whole rest. The forty-first measure is a whole rest. The forty-second measure is a whole rest. The forty-third measure is a whole rest. The forty-fourth measure is a whole rest. The forty-fifth measure is a whole rest. The forty-sixth measure is a whole rest. The forty-seventh measure is a whole rest. The forty-eighth measure is a whole rest. The forty-ninth measure is a whole rest. The fiftieth measure is a whole rest. The fifty-first measure is a whole rest. The fifty-second measure is a whole rest. The fifty-third measure is a whole rest. The fifty-fourth measure is a whole rest. The fifty-fifth measure is a whole rest. The fifty-sixth measure is a whole rest. The fifty-seventh measure is a whole rest. The fifty-eighth measure is a whole rest. The fifty-ninth measure is a whole rest. The sixtieth measure is a whole rest. The sixty-first measure is a whole rest. The sixty-second measure is a whole rest. The sixty-third measure is a whole rest. The sixty-fourth measure is a whole rest. The sixty-fifth measure is a whole rest. The sixty-sixth measure is a whole rest. The sixty-seventh measure is a whole rest. The sixty-eighth measure is a whole rest. The sixty-ninth measure is a whole rest. The seventieth measure is a whole rest. The seventy-first measure is a whole rest. The seventy-second measure is a whole rest. The seventy-third measure is a whole rest. The seventy-fourth measure is a whole rest. The seventy-fifth measure is a whole rest. The seventy-sixth measure is a whole rest. The seventy-seventh measure is a whole rest. The seventy-eighth measure is a whole rest. The seventy-ninth measure is a whole rest. The eightieth measure is a whole rest. The eighty-first measure is a whole rest. The eighty-second measure is a whole rest. The eighty-third measure is a whole rest. The eighty-fourth measure is a whole rest. The eighty-fifth measure is a whole rest. The eighty-sixth measure is a whole rest. The eighty-seventh measure is a whole rest. The eighty-eighth measure is a whole rest. The eighty-ninth measure is a whole rest. The ninetieth measure is a whole rest. The hundredth measure is a whole rest.

[illegible]

107

cresc.

pp

W

113

mp

p

The Rose Tree

121

pp *espress.* *cresc.* *mp* *dim.* *pp*

[illegible]

154

The musical score for Example 154 consists of two staves. The first staff is in treble clef with a key signature of two sharps (F# and C#) and a time signature of 3/4. It contains six measures: the first measure has six eighth notes (B4, C#5, D5, E5, F#5, G5) with '+' signs above each; the second measure is a whole rest with a '2' above it; the third measure is a double bar line; the fourth measure has three eighth notes (B4, C#5, D5) with '+' signs above each; the fifth measure is a whole rest; and the sixth measure is a double bar line. The second staff is in bass clef with a key signature of one sharp (F#) and a time signature of 4/4. It contains four measures: the first measure has four eighth notes (B3, C#4, D4, E4) with '+' signs above each; the second measure has four eighth notes (F#4, G4, A4, B4) with '+' signs above each; the third measure has four eighth notes (C5, D5, E5, F#5) with '+' signs above each; and the fourth measure is a whole rest.

[illegible]

The musical score for 'The Rose Tree' is written on a single staff with a treble clef and a key signature of two sharps (F# and C#). The tempo is marked 'moderato'. The score is divided into four measures by bar lines. The first measure is in 3/4 time, the second in 2/4, the third in 3/4, and the fourth in 4/4. The melody consists of eighth and sixteenth notes, with some measures containing beamed sixteenth notes. The dynamics are marked 'mf' (mezzo-forte) at the beginning and 'f' (forte) at the end. The score is enclosed in a box with a Creative Commons license symbol (CC) in the top left corner.

170 *cresc.*

180

f *cresc.*