

La citrouille qui voulait aller danser

Tuba in B \flat

Laurent BÔMONT

Tempo di valse $\text{♩} = 172$

f

A **A tempo**

4 **rit.** **3** **4**

B **20** **C** **8** **rit.** **D** **A tempo**

mf

50

f

58

E **Meno mosso** **rall.**

65

mf

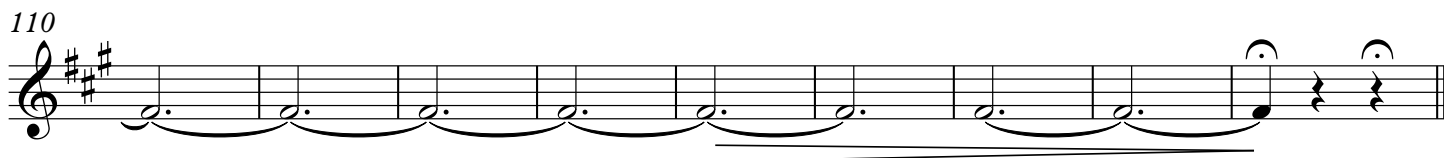
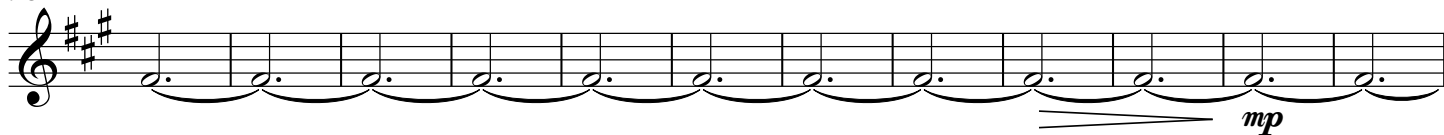
F **A tempo**

73

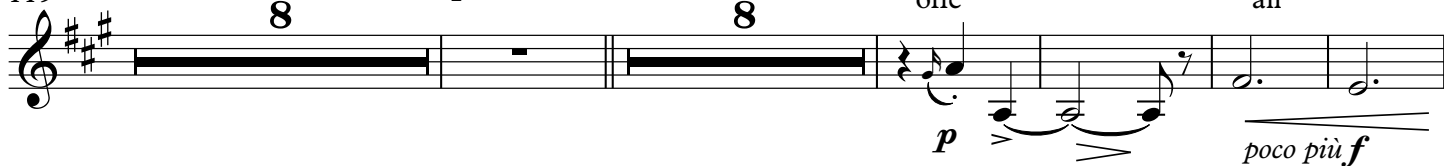
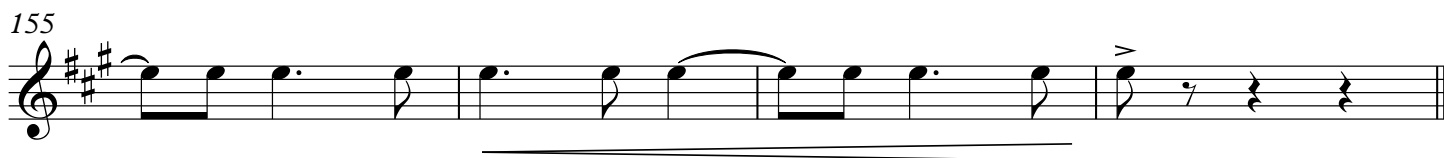
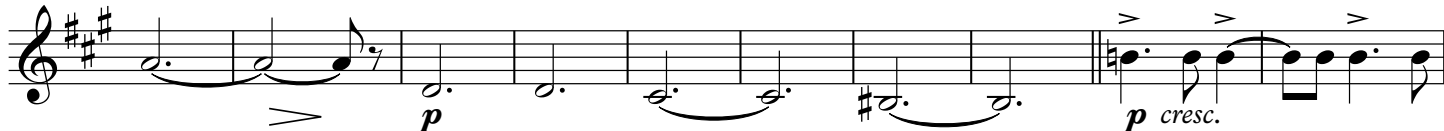
G

81

90

Tuba in B \flat 98 **H** **Encora meno mosso** $\text{♩} = 150$ **I**119 **J** **Tristamente** $\text{♩} = 76$ **poco rit.** **K** **Poco più mosso** $\text{♩} = 82$ **L**

all

140 **M** **A tempo accel.**159 **N** **Tempo primo**168 **accel.**