

# La citrouille qui voulait aller danser

Tuba in E $\flat$  B C

Laurent BÔMONT

Tempo di valse  $\text{♩} = 172$

**f**

**A** A tempo 4 rit. 3 4

**B** 16 20 **C** 8 rit. **D** A tempo **mf**

49 **f**

57

**E** Meno mosso rall. **mf**

65

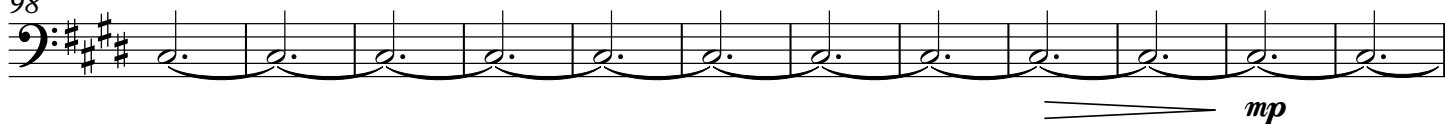
**F** A tempo 73

**G** 81

90

Tuba in E $\flat$  B C**H****Encora meno mosso**  $\text{♩} = 150$ **I**

98

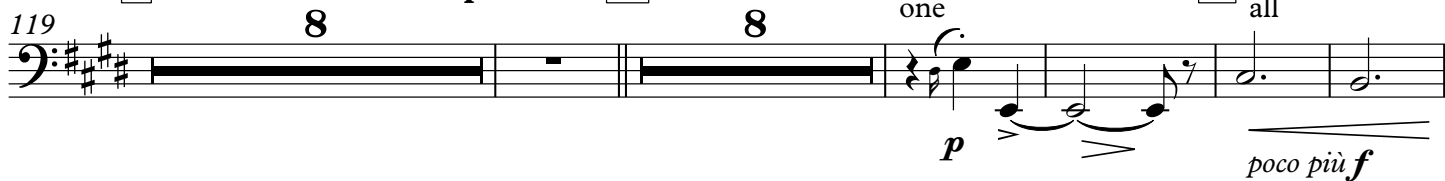


110

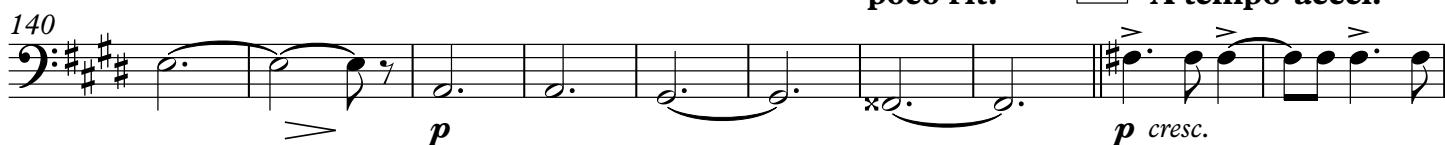
**J****Tristamente**  $\text{♩} = 76$  poco rit.**K****Poco più mosso**  $\text{♩} = 82$ **L**

all

119



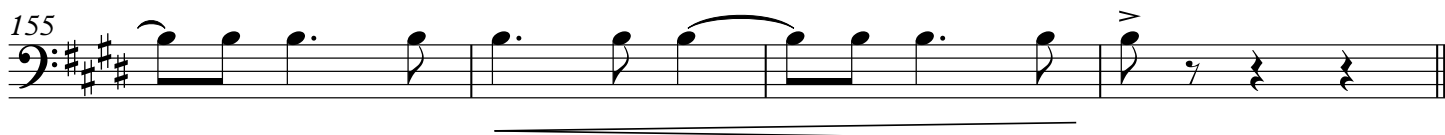
140



150



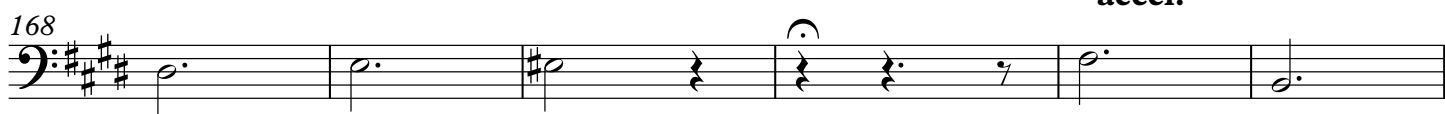
155

**N****Tempo primo**

159



168



accel.

174

