

Commissioned by HAFABRA Music and dedicated to Louis MARTINUS

# LA FLEUR EN PAPIER DORÉ (THE GOLDEN PAPER FLOWER)

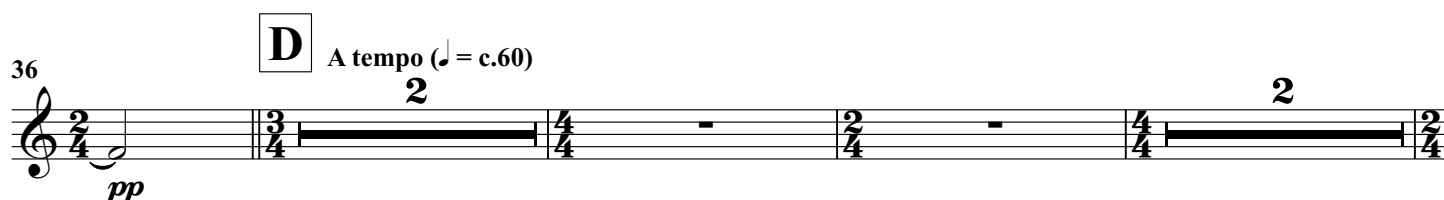
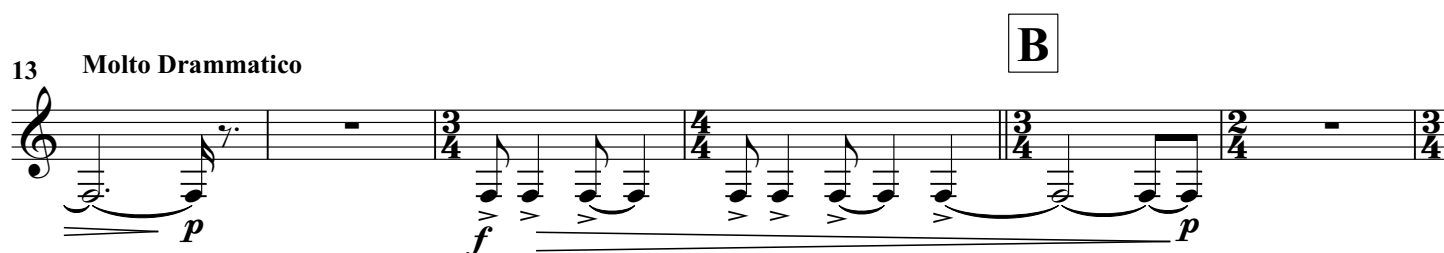
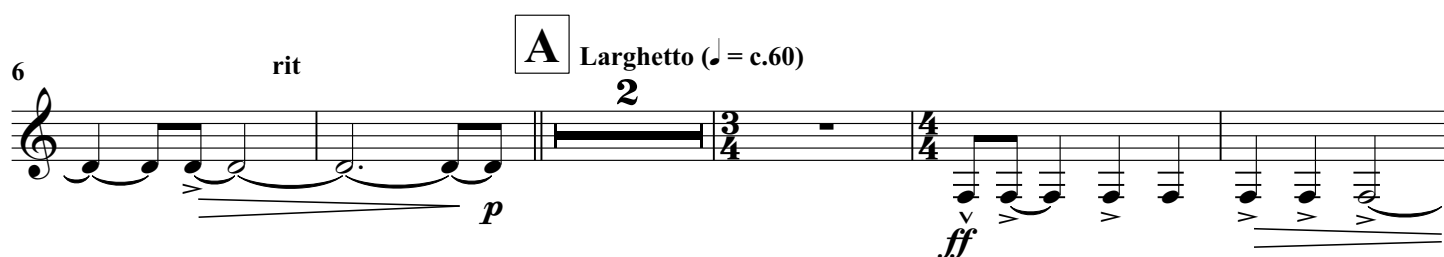
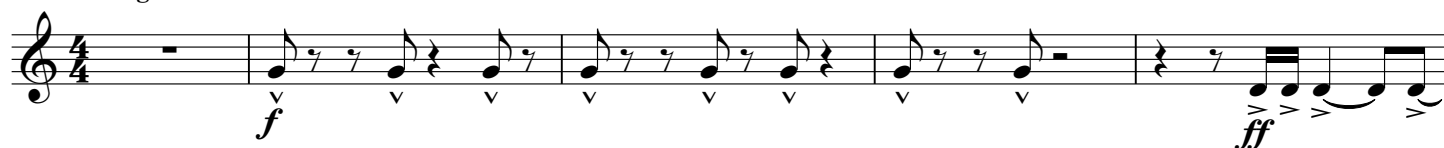
A surrealist fantasy for symphonic wind orchestra

**B♭ Bass Trombone**

**Nigel CLARKE**

## I. LA LAMPE PHILOSOPHIQUE (THE PHILOSOPHER'S LAMP)

Allegro ♩ = c.132



## B♭ Bass Trombone

**E** L'istesso Tempo  
Quasi Marcia  
senza sord.

**F**

**G**

**H** Allegro ♩ = c.132

**I** Sonore  
A tempo ♩ = c.60

**J**

**K**

**L** A tempo (♩ = c.60)  
rit. A tempo (♩ = c.60)

**M** Molto Ritmico

106 Molto Ritmico Soli

50 *mp* *mf* *mp* *mf* *ff* subito

55 *mf*

60 *p* *pp* *p* *mp* *f*

65 rit. *ff* *pp*

74 *mp* *mf* *mp*

82

89 (con sord.) *p* rit.

97 *mp* *mf* *mp* *mf* *ff*

106 *p*

## B♭ Bass Trombone

**N** II. L'ÉCHELLE DE FEU (THE LADDER OF FIRE)  
Allegro ♩ = c.132 (Accents are in dynamic context!)

111 *subito, leggiero* **2** **2** *pp* *p*

118 **O** Brutale! *f*

123 *ff* *f*

128 *ff* *f*

132 *f* *ff*

137 Molto Brutale! *ff*

142 **P** *p* *ff*

146 Solo *p* *f*

150

154 **Q** **2** **4** *pp* *leggiero*

## B♭ Bass Trombone

**R**