

Commissioned by HAFABRA Music and dedicated to Louis MARTINUS

LA FLEUR EN PAPIER DORÉ (THE GOLDEN PAPER FLOWER)

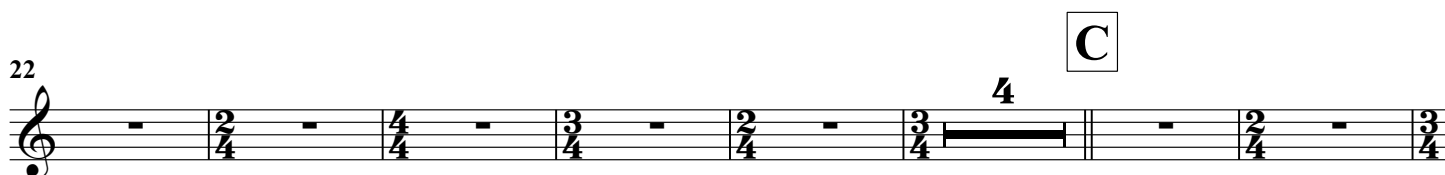
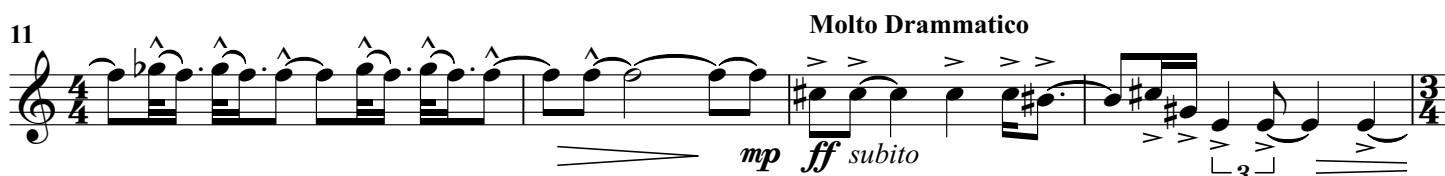
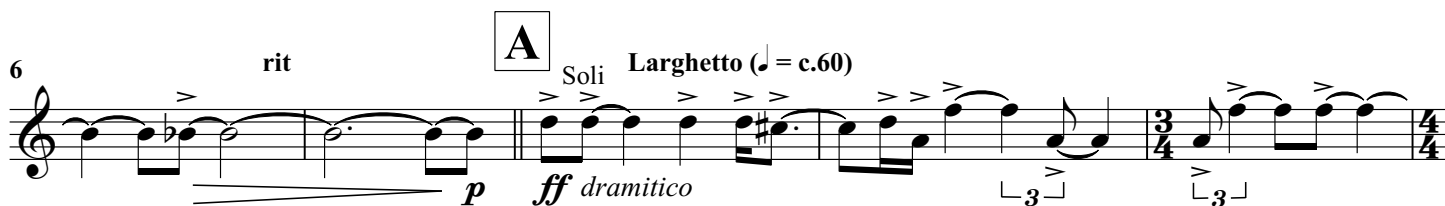
A surrealist fantasy for symphonic wind orchestra

B \flat Trombone 2

Nigel CLARKE

I. LA LAMPE PHILOSOPHIQUE (THE PHILOSOPHER'S LAMP)

Allegro $\text{♩} = \text{c.132}$



Bb Trombone 2

E L'istesso Tempo
Quasi Marcia
senza sord.

50 *mp* *mf* *mp* *mf* *ff* subito

F

55 *mf*

G

60 *p* *pp* *p* *mp* *f* Allegro ♩ = c.132

H

65 rit. *ff* *pp* **I** Sonore
A tempo ♩ = c.60
3

74 *mp* *mf* *mp* 2

J **K**

82

89 con sord. rit. Soli *p* *(p)* **L** A tempo (♩ = c.60) rit. 3

95 A tempo (♩ = c.60) *pp* *mp* *mf* *mp* *mf* *mp* *mf*

M Soli *mp* subito *mf* *mp* *mf* *ff* subito

101

105 Molto Ritmico Molto Ritmico

B♭ Trombone 2

II. L'ÉCHELLE DE FEU (THE LADDER OF FIRE)

N

Allegro ♩ = c.132

109 1 **Allegro** ♩ = c.132

p *subito, leggiero* *pp*

117 (Accents are in dynamic context!)

O

Brutale!

The musical score for 'The Little Boat' is written on a single staff in treble clef. It begins with a 4/4 time signature, followed by a 3/4 time signature, and then a 2/4 time signature. The piece concludes with a double bar line and a 4/4 time signature, followed by a 3/4 time signature. The melody is composed of eighth and quarter notes, with some measures containing rests. Dynamics include piano (*p*) and forte (*f*). There are also accents (*>*) and a crescendo hairpin (*<*) marking the end of the piece.

121



125

ff

130

Example 130

[illegible]

P

139

1

p

144

Example 144 shows measures 144-148. Measure 144 has a treble clef and a key signature of one flat. It contains eighth notes with accents and a forte (ff) dynamic. Measure 145 continues the pattern. Measure 146 has a double bar line and a '2' above it. Measure 147 has a 3/4 time signature, eighth notes with accents, and a forte (ff) dynamic. Measure 148 has a 2/4 time signature, eighth notes with accents, and a forte (ff) dynamic.

150

4/4

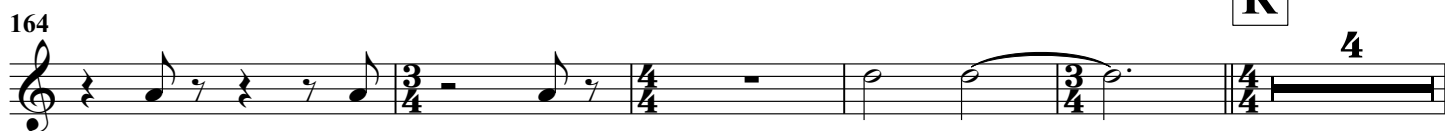
ff

Q

154

pp leggiero

Bb Trombone 2

R**S****T****U**

(Brutale!)

**V**

Energico (Coda)

