

Commissioned by HAFABRA Music and dedicated to Louis MARTINUS

LA FLEUR EN PAPIER DORÉ (THE GOLDEN PAPER FLOWER)

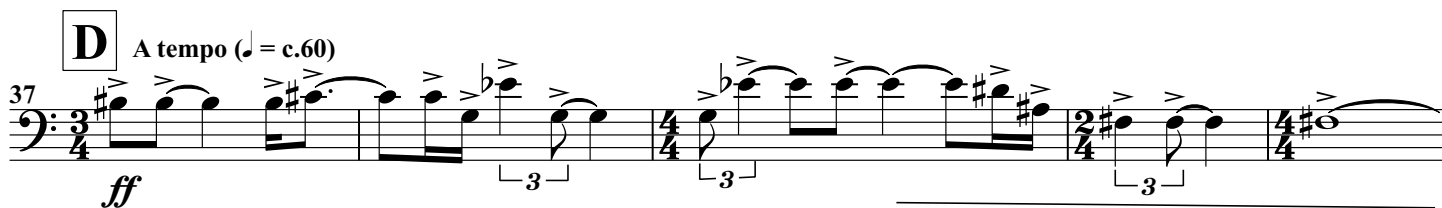
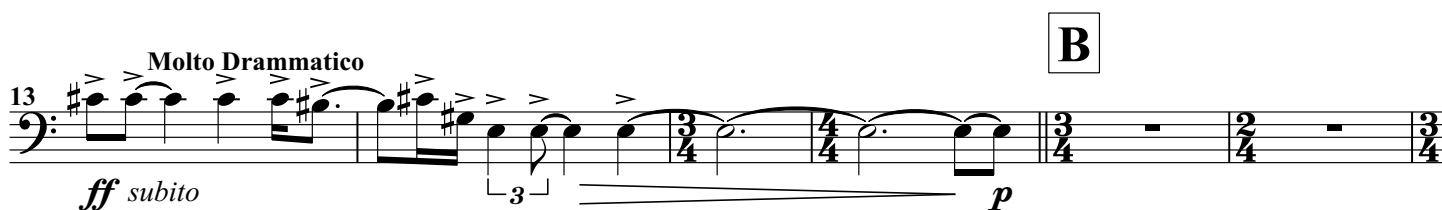
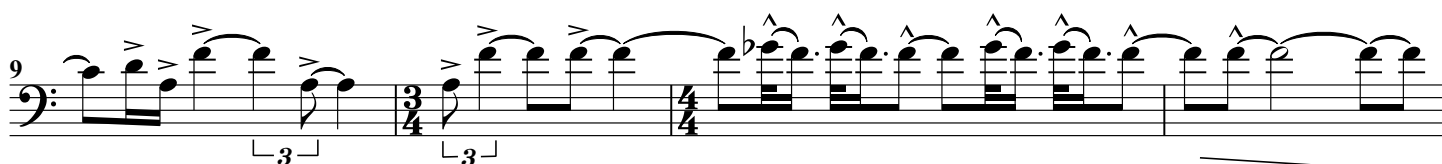
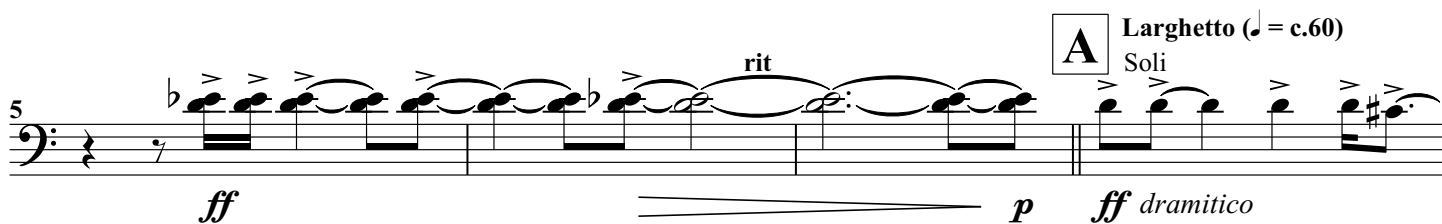
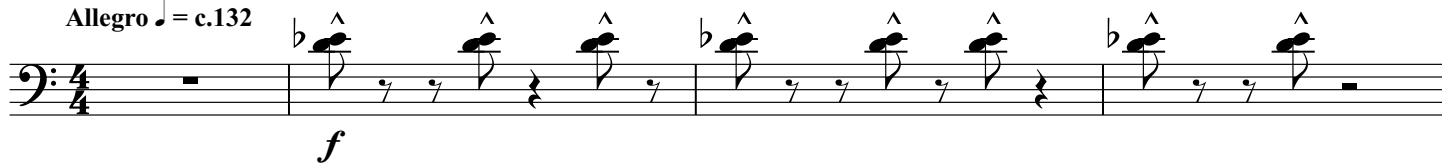
A surrealist fantasy for symphonic wind orchestra

Euphoniums 1, 2 in B \flat BC

Nigel CLARKE

I. LA LAMPE PHILOSOPHIQUE (THE PHILOSOPHER'S LAMP)

Allegro $\text{♩} = \text{c.132}$



Euphoniums 1, 2 in B \flat BC

F 54 *Soli* *ff*

G 58 *mf*

H *Allegro* $\text{♩} = c.132$ *f*

I 66 *Sonore* *A tempo* $\text{♩} = c.60$ *ff* *rit.* *pp*

75 *1. Soli (with Bssn)* *mf*

J 82

K

88 *rit.* *Soli* *A tempo* $\text{♩} = c.60$ *p*

94 *rit.* *A tempo* $\text{♩} = c.60$ *3* *1.* *mp* *mf*

M 101 *Tutti* *Molto Ritmico* *mp subito* *mf* *mp < mf* *ff subito*

106 *Molto Ritmico*

II. L'ÉCHELLE DE FEU (THE LADDER OF FIRE)

N *Allegro* $\text{♩} = c.132$ (Accents are in dynamic context!)

111 *3* *2* *pp* *p*

Euphoniums 1, 2 in B \flat BC

O Brutale!

119 *f*

123 *ff*

127 *f* *ff* *f*

131 *f*

134 *ff* *ff* *f*

Molto Brutale!

138 *ff*

P *p*

142 *mp* *ff* *f* *ff*

146 *ff* *ff* *f*

150 *ff*

Q

153 *f*

Euphoniums 1, 2 in B \flat BC

159 1. **4** 1. **3/4** **4/4** **3/4**

pp *leggiero*

R **S**

168 **2** 1. **2** **3**

p

178 *ff* *ff*

T

182 *f*

U (Brutale!)

186 *f* *ff*

190 *ff*

194 *ff*

V Energico (Coda)

199 *f* *sffz* *p* *ff* *f* *ff*

204

208 *f* *ff*