

Commissioned by HAFABRA Music and dedicated to Louis MARTINUS

LA FLEUR EN PAPIER DORÉ (THE GOLDEN PAPER FLOWER)

A surrealist fantasy for symphonic wind orchestra

B♭ Trombone 1 BC

Nigel CLARKE

I. LA LAMPE PHILOSOPHIQUE (THE PHILOSOPHER'S LAMP)

Allegro ♩ = c.132

f **ff**

A **Larghetto** (♩ = c.60) **Soli**

rit **p** **ff** **dramitico** **3** **3**

11 **Molto Drammatico**

mp **ff** **subito** **3**

B

15 **Soli**

p **mf** **legato** **f** **>** **mf**

C

22 **4**

33 **con sord.** **rit.** **D** **A tempo** (♩ = c.60)

p **6** **pp** **2** **2** **3**

40 **2** **3**

B♭ Trombone 1 BC

E L'istesso Tempo
Quasi Marcia
senza sord.

50 *mp* *mf* \longrightarrow *mp* $<$ *mf* *ff* subito

F

55 *mf*

G

59 *p* \longrightarrow *pp* *p* *mp* \longrightarrow $<$ *f*

H Allegro ♩ = c.132

64 *ff* rit. *pp*

I Sonore
A tempo ♩ = c.60

70 3 *mp* \longrightarrow *mf* $>$ *mp*

J

79 2

K con sord. rit. Soli

87 *p* (*p*)

L A tempo (♩ = c.60)

93 rit. A tempo (♩ = c.60) *pp* *mp* $<$ *mf* $>$ *mp* $<$ *mf* $>$

M Soli

99 *mp* $<$ *mf* \longrightarrow $<$ *mp* subito *mf* \longrightarrow *mp* $<$ *mf* *ff* subito

Molto Ritmico

104

B♭ Trombone 1 BC

Molto Ritmico



II. L'ÉCHELLE DE FEU (THE LADDER OF FIRE)

p

N

Allegro ♩ = c.132

(Accents are in dynamic context!)



subito, leggiero

pp

p

O

Brutale!



f



ff



ff

f



f

ff



ff

Molto Brutale!

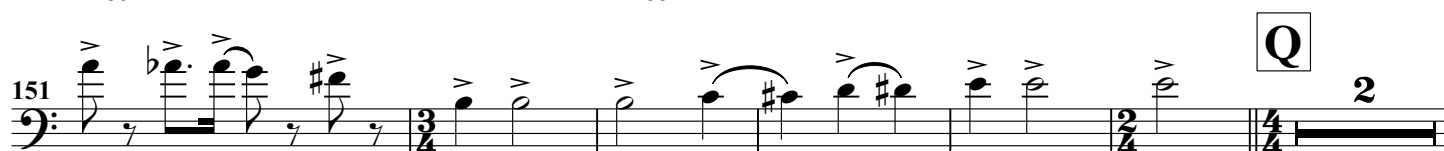


p



ff

ff



ff

Q

2

B♭ Trombone 1 BC

159 **4** *pp* *leggero* **R** **S**

169 **4** *mp* *ff* *f*

176 *ff* *ff*

181 *senza sord.* *ff* *f* **T**

185 *f*

189 **U** (Brutale!) *ff*

194 *ff*

200 **V** *Energico (Coda)* *ffz p < ff*

205

207 *ff*