

Commissioned by HAFABRA Music and dedicated to Louis MARTINUS

LA FLEUR EN PAPIER DORÉ (THE GOLDEN PAPER FLOWER)

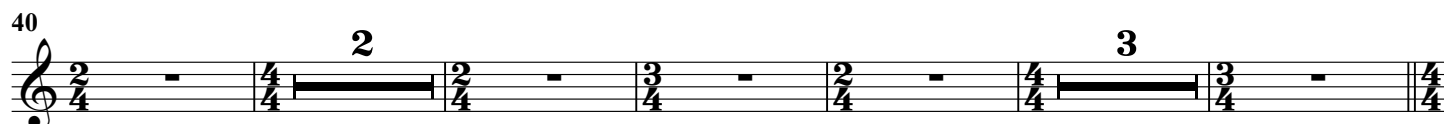
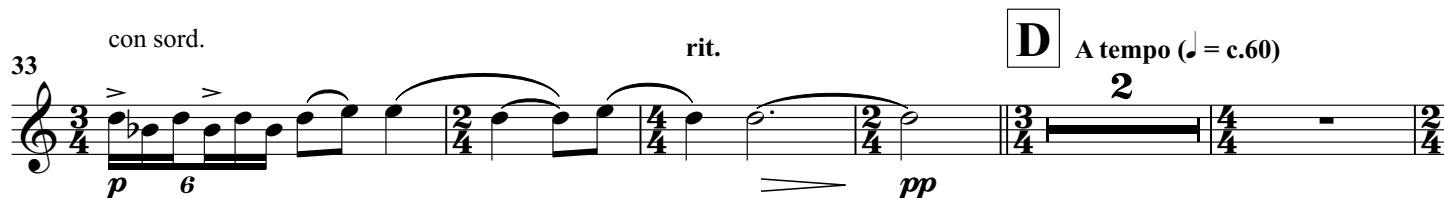
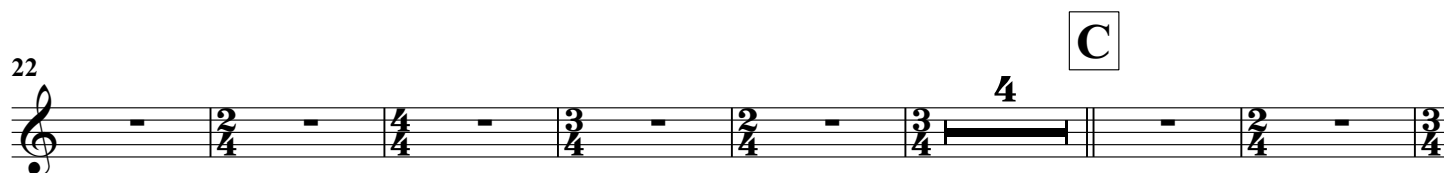
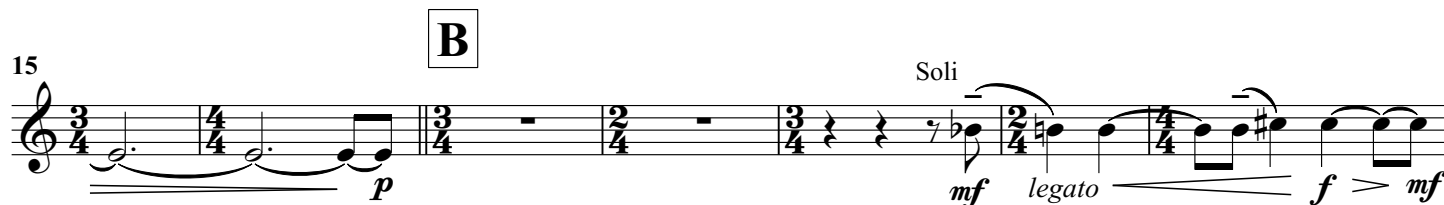
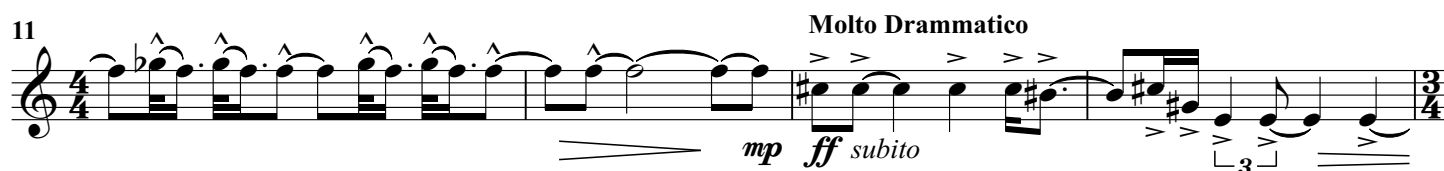
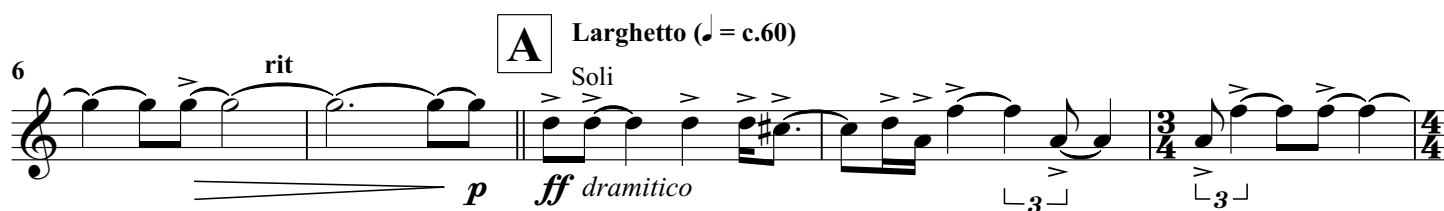
A surrealist fantasy for symphonic wind orchestra

B♭ Trombone 1

Nigel CLARKE

I. LA LAMPE PHILOSOPHIQUE (THE PHILOSOPHER'S LAMP)

Allegro ♩ = c.132



Bb Trombone 1

E L'istesso Tempo
Quasi Marcia
senza sord.

50 *mp* *mf* *mp < mf* *ff subito* **F**

55 *mf* **G**

59 *p* *pp* *p* *mp* *f* **H** Allegro ♩ = c.132
rit.

64 *ff* *pp*

70 **I** Sonore
A tempo ♩ = c.60
3 *mp* *mf > mp*

79 **J**

87 **K** con sord. rit. Soli
p (*p*)

93 **L** A tempo (♩ = c.60) rit. A tempo (♩ = c.60)
pp *mp < mf > mp < mf >*

99 **M** Soli
mp < mf *mp subito mf* *mp < mf* *ff subito*

104 Molto Ritmico

Bb Trombone 1

Molto Ritmico



II. L'ÉCHELLE DE FEU (THE LADDER OF FIRE)

Allegro ♩ = c.132

(Accents are in dynamic context!)



B♭ Trombone 1

159 **4**
pp *leggero*

169 **R** **4** **S**
mp *ff* *f*

176 *ff* *ff*

181 *senza sord.* **T** *ff* *f*

185 *f*

189 **U** (Brutale!) *ff*

194 *ff*

200 **V** **Energico (Coda)** *sffz p* *ff*

205

207 *ff*