

Commissioned by HAFABRA Music and dedicated to Louis MARTINUS

# LA FLEUR EN PAPIER DORÉ (THE GOLDEN PAPER FLOWER)

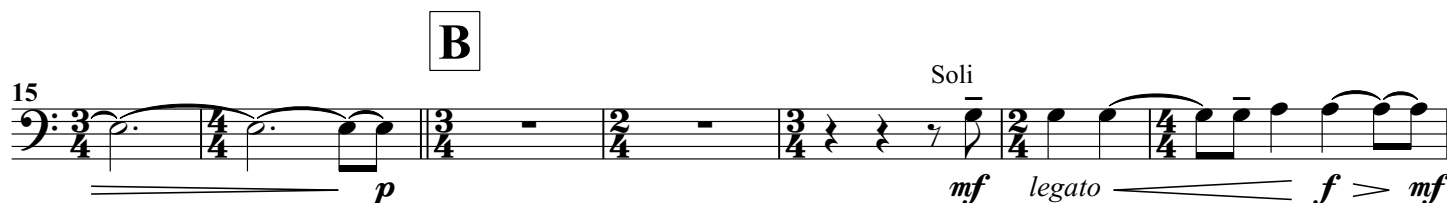
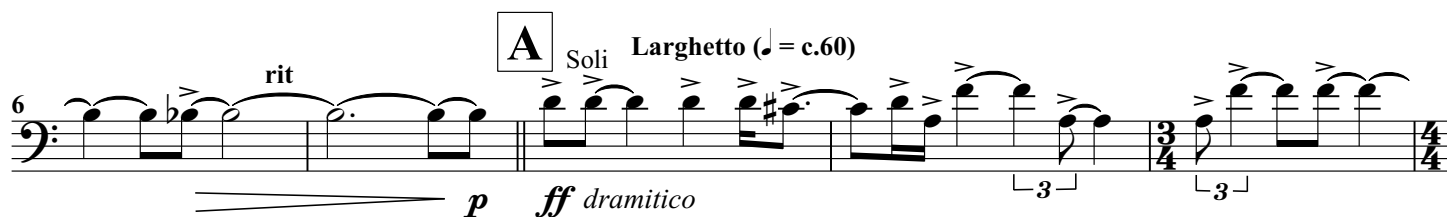
A surrealist fantasy for symphonic wind orchestra

B $\flat$  Trombone 2 BC

Nigel CLARKE

## I. LA LAMPE PHILOSOPHIQUE (THE PHILOSOPHER'S LAMP)

Allegro ♩ = c.132



## B♭ Trombone 2 BC

**E** L'istesso Tempo Quasi Marcia  
senza sord.

50 *mp* *mf* *mp* *mf* *ff* subito

**F**

**G**

55 *mf*

**H** Allegro ♩ = c.132

60 *p* *pp* *p* *mp* *f*

**I** Sonore A tempo ♩ = c.60

65 *ff* *pp* rit. 3 4 4

74 *mp* *mf* *mp* 2 4 4

**J** **K**

82

89 con sord. rit. Soli **L** A tempo (♩ = c.60) rit. 3

*p* (*p*)

A tempo (♩ = c.60)

95 *pp* *mp* *mf* *mp* *mf* *mp* *mf*

**M** Soli

101 *mp* subito *mf* *mp* *mf* *ff* subito

Molto Ritmico

105 Molto Ritmico

## B♭ Trombone 2 BC

## II. L'ÉCHELLE DE FEU (THE LADDER OF FIRE)

N

Allegro ♩ = c.132

109 *p* *subito, leggiero* *pp*

(Accents are in dynamic context!)

O

Brutale!

117 *p* *f*

121

125 *ff*

130 *f*

135 *ff*

Molto Brutale!

139 *p*

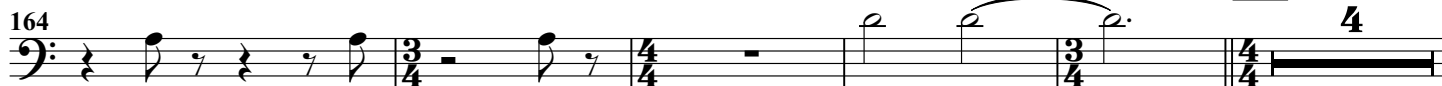
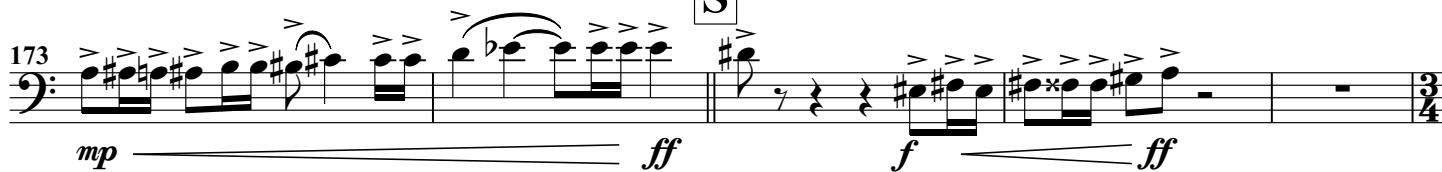
144 *ff*

150 *ff*

Q

154 *pp leggiero*

## B♭ Trombone 2 BC

**R****S****T****U**

(Brutale!)

**V**

Energico (Coda)

