

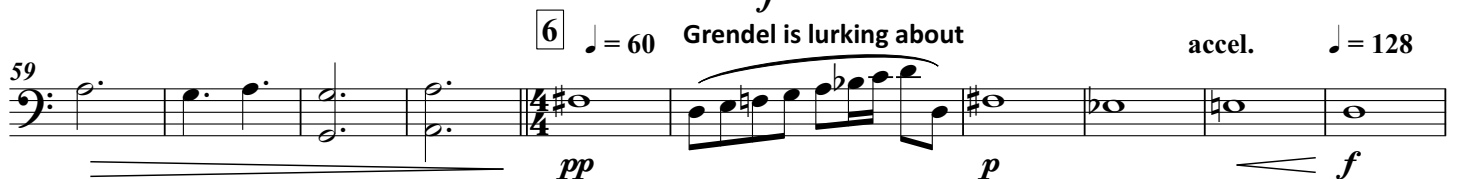
Beowulf: an Epic Tale

Symphonic Tone Poem

Tuba in B \flat B C

Kelly BENNETTE

$\text{♩} = 80$ The Majestic Heorot hall



Tuba in B \flat B C $\text{♩} = 76$

8

Hrothgar's God protection



9

 $\text{♩} = 132$

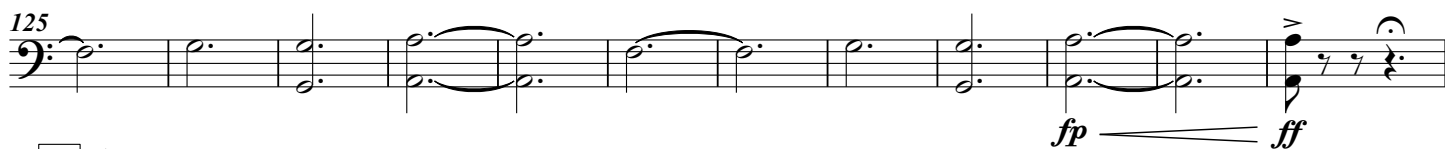
Beowulf comes to offer assistance

10



11

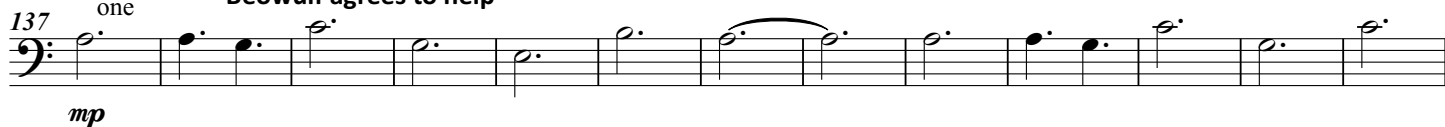
12



13

 $\text{♩} = 100$
one

Beowulf agrees to help



14

 $\text{♩} = 112$

A feast for Beowulf



15

Unfeath mocks Beowulf. Beowulf boasts of past victories

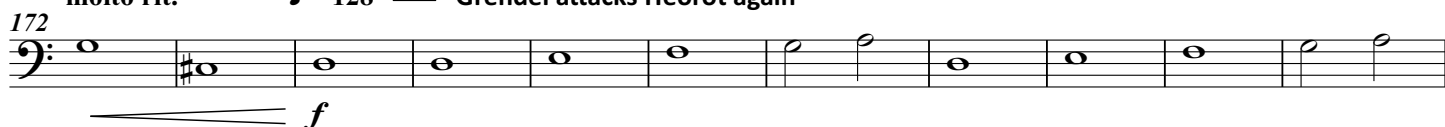


molto rit.

 $\text{♩} = 128$

16

Grendel attacks Heorot again



17

Beowulf defeats Grendel

molto rall.



Tuba in B \flat B C

18

 $\text{♩} = 112$

A feast of celebration

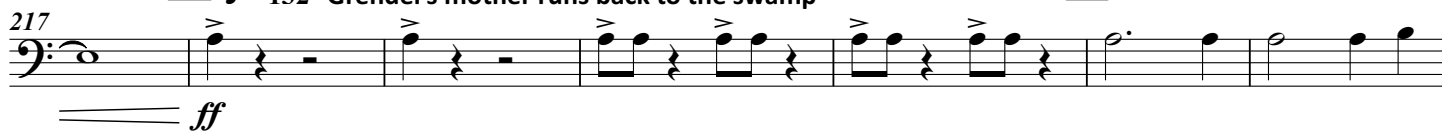


19 Grendel's mother murders Aeschere, the king's advisor

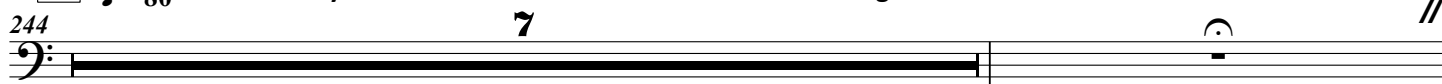
molto rall.

20 $\text{♩} = 132$ Grendel's mother runs back to the swamp

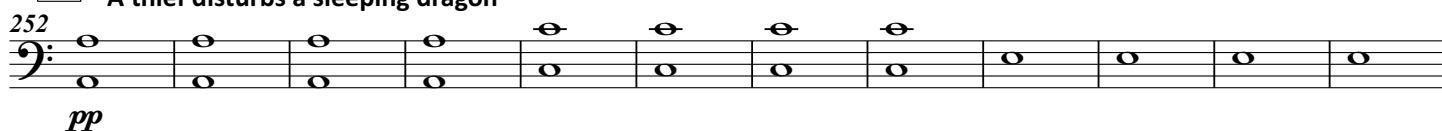
21



22 Beowulf defeats Grendel's mother

23 $\text{♩} = 80$ Beowulf says farewell and returns home and becomes King of Geatland

24 A thief disturbs a sleeping dragon



Tuba in B \flat B C

molto accel.

25 ♩ = 132 The dragon attacks Beowulf's castle

264

p ————— *f*

26

273

27 Beowulf kills the dragon, but is mortally wounded **molto rit.**

284

mp ————— *f*

♩ = 80 Beowulf dies **28**

291

mp ————— *ff* > *p*

29 Beowulf's funeral **30**

302

31 Beowulf's ashes are buried with treasure taken from the dragon

312

ff

30 The lighting of the pyre

♩ = 100

31 Beowulf's ashes are buried with treasure taken from the dragon

321

f

329

ff