

Beowulf: an Epic Tale

Symphonic Tone Poem

Trombone in B \flat 2

Kelly BENNETTE

$\text{♩} = 80$ The Majestic Heorot hall

f 3 3 3 3

5 3 3 3

10 3 *mp* *mf*

17 *rit.* *f* *p* *pp*

23 [2] $\text{♩} = 100$ A merry time in Heorot [3] $\text{♩} = 88$ Hrothgar's entrance to Heorot

16 *ff*

45 [4]

54 [5] $\text{♩} = 100$ Merriment goes on *rit.* [6] $\text{♩} = 60$ Grendel is lurking about *accel.* $\text{♩} = 128$

2 4 *mp* *pp* *p* *f*

69 [7] Grendel attacks Heorot

80 $\text{♩} = 76$ [8] Hrothgar's God protection *pp*

88 [9] $\text{♩} = 132$ Beowulf comes to offer assistance [10]

3 3 16 *f*

114 **11** **12**

f

126

fp *ff*

137 **13** $\text{♩} = 100$ Beowulf agrees to help **14** $\text{♩} = 112$ A feast for Beowulf

16 8

pp

164 **15** Unfeareth mocks Beowulf. Beowulf boasts of past victories

mp

172 *molto rit.* $\text{♩} = 128$ **16** Grendel attacks Heorot again

f

183 **17** Beowulf defeats Grendel

191 *molto rall.* **18** $\text{♩} = 112$ A feast of celebration

7

mf *p*

206 **19** Grendel's mother murders Aeschere, the king's advisor

3 *molto rall.*

mp *p*

218 **20** $\text{♩} = 132$ Grendel's mother runs back to the swamp **21**

ff

224

234 **22** Beowulf defeats Grendel's mother

f

Trombone in B \flat 2

239

244 **23** ♩ = 80 Beowulf says farewell and returns home and becomes King of Geatland252 **24** A thief disturbs a sleeping dragon
molto accel.**25** ♩ = 132 The dragon attacks Beowulf's castle

271

26282 **27** Beowulf kills the dragon, but is mortally wounded

290 molto rit.

♩ = 80 Beowulf dies

28

301

29 Beowulf's funeral

4

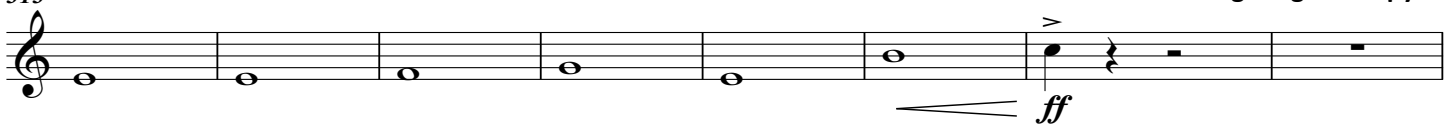
30

313

accel.

♩ = 100

The lighting of the pyre



321

31 Beowulf's ashes are buried with treasure taken from the dragon

328

