

Beowulf: an Epic Tale

Symphonic Tone Poem

Tuba in Eb B C

Kelly BENNETTE

$\text{♩} = 80$ The Majestic Heorot hall

f

7

14

mf *f* *mp* *rit.*

20

26

34

42

51

59

69

1

2

3

4

5

6

7

$\text{♩} = 100$ A merry time in Heorot

p *pp* *mp*

$\text{♩} = 88$ Hrothgar's entrance to Heorot

ff

$\text{♩} = 100$ Merriment goes on

f *rit*

$\text{♩} = 60$ Grendel is lurking about

pp *p* *accel.* $\text{♩} = 128$ *f*

Grendel attacks Heorot

Tuba in E \flat B C

♩ = 76 [8] Hrothgar's God protection



[9] ♩ = 132 Beowulf comes to offer assistance

[10]



[11]

[12]



[13] ♩ = 100 one

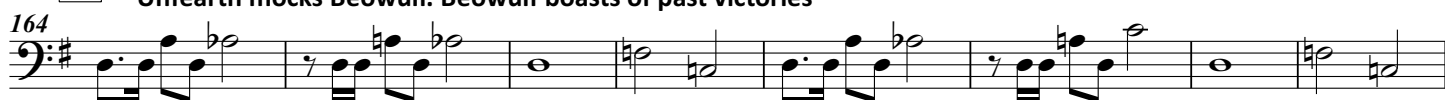
Beowulf agrees to help



[14] ♩ = 112 A feast for Beowulf

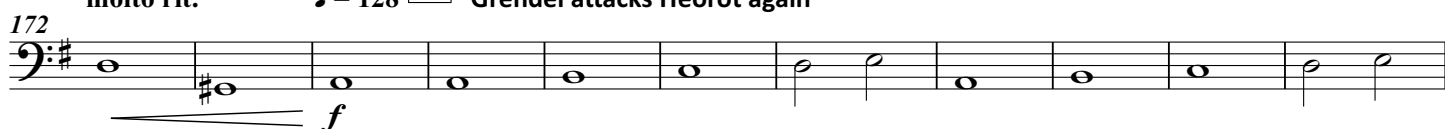


[15] Unfearth mocks Beowulf. Beowulf boasts of past victories



molto rit.

♩ = 128 [16] Grendel attacks Heorot again



[17] Beowulf defeats Grendel

molto rall.



Tuba in E \flat B C

18

♩ = 112

A feast of celebration



19

Grendel's mother murders Aeschere, the king's advisor

molto rall.

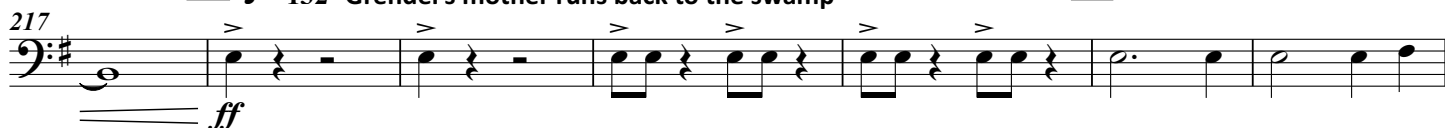


20

♩ = 132

Grendel's mother runs back to the swamp

21



22

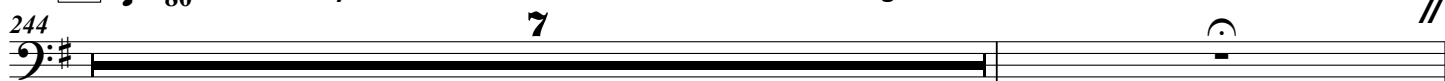
Beowulf defeats Grendel's mother



23

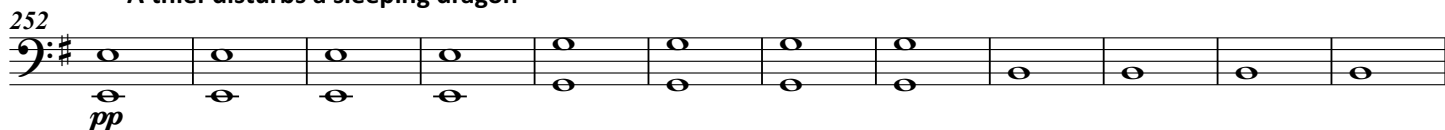
♩ = 80

Beowulf says farewell and returns home and becomes King of Geatland



24

A thief disturbs a sleeping dragon



Tuba in E \flat B C

25 $\text{♩} = 132$ The dragon attacks Beowulf's castle

molto accel.

264 *p* *f*

26

273

27 Beowulf kills the dragon, but is mortally wounded *molto rit.*

284 *mp* *f*

$\text{♩} = 80$ Beowulf dies **28**

291 *mp* *ff* *p*

29 Beowulf's funeral **30**

302

accel. $\text{♩} = 100$ The lighting of the pyre

312 *ff*

31 Beowulf's ashes are buried with treasure taken from the dragon

321 *f*

329 *ff*