

Beowulf: an Epic Tale

Symphonic Tone Poem

Euphonium in B \flat B C

Kelly BENNETTE

$\text{♩} = 80$ The Majestic Heorot hall

f

1

7 *mp*

14 *mf* *f* rit.

2 $\text{♩} = 100$ A merry time in Heorot

21 *p* *pp* *mp*

27

3 $\text{♩} = 88$ Hrothgar's entrance to Heorot

35 *ff*

4

43

5 $\text{♩} = 100$ Merriment goes on rit

52 *f* 2

6 $\text{♩} = 60$ Grendel is lurking about accel. $\text{♩} = 128$ 7 Grendel attacks Heorot

61 *mp* *pp* *p* *f*

70

75

Euphonium in B♭ B C

♩ = 76

8

Hrothgar's God protection



9

♩ = 132

Beowulf comes to offer assistance

10



11



12



13

♩ = 100

solo

Beowulf agrees to help



14

♩ = 112

A feast for Beowulf

15

Unfearth mocks Beowulf. Beowulf boasts of past victories



17

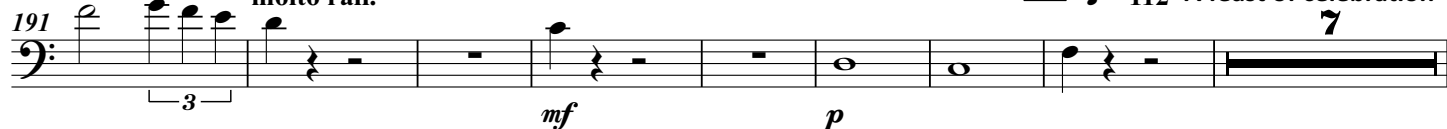
Beowulf defeats Grendel



18

♩ = 112

A feast of celebration



19 Grendel's mother murders Aeschere, the king's advisor Cue L. W. *molto rall.*

206 *mp* *p*

20 $\text{♩} = 132$ Grendel's mother runs back to the swamp **21**

217 *ff*

224

22 Beowulf defeats Grendel's mother

234 *f*

23 $\text{♩} = 80$ Beowulf says farewell and returns home and becomes King of Geatland

242 *f* *p*

24 A thief disturbs a sleeping dragon Cue B. Clar. *pp* *pp* *solo*

252

25 $\text{♩} = 132$ The dragon attacks Beowulf's castle *molto accel.* *p* *f*

259

270

26

276

Euphonium in B \flat B C

27 Beowulf kills the dragon, but is mortally wounded

284 *mp* *f*

molto rit.

289

$\text{♩} = 80$ Beowulf dies

28

294 *mp* *ff* *p*

29 Beowulf's funeral

302

30

310

The lighting of the pyre

accel. $\text{♩} = 100$

31 Beowulf's ashes are buried with treasure taken from the dragon

318 *ff* *f*

326 *ff*

331