

Ouverture pathétique

B \flat Bass

Dmitri KABALEVSKY Op. 64

Arr. José SCHYNS

Allegro molto e appassionata $\text{♩} = 108 - 112$

12 1

1 *pp*

22 *cresc.*

2

33 *f marc.* *ff* *p*

43 *f*

3

53 *mp cresc.* *ff*

65

76

4 5

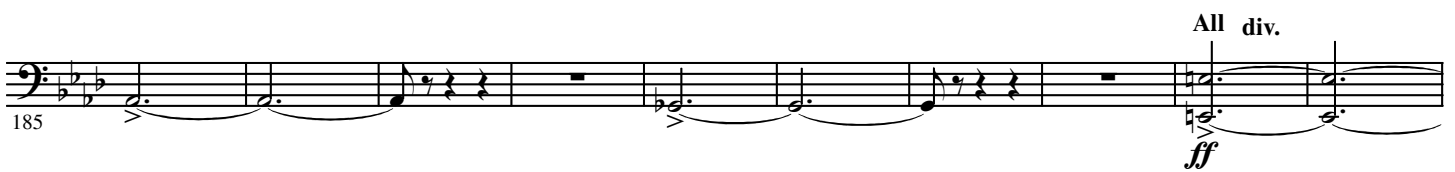
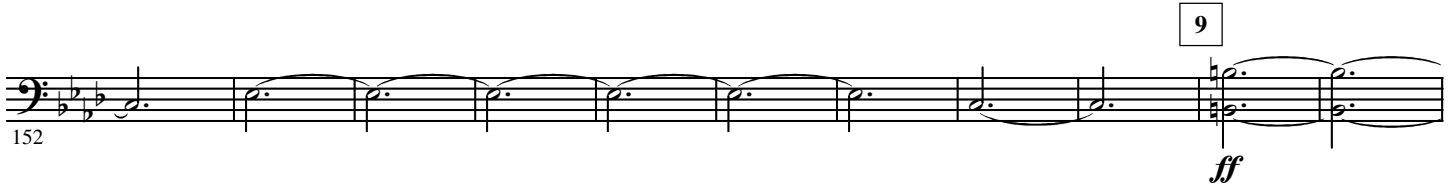
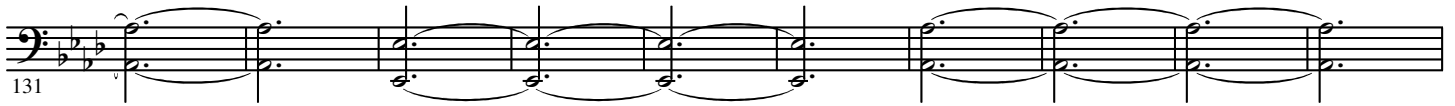
84 *ff* *ff* *ff*

6

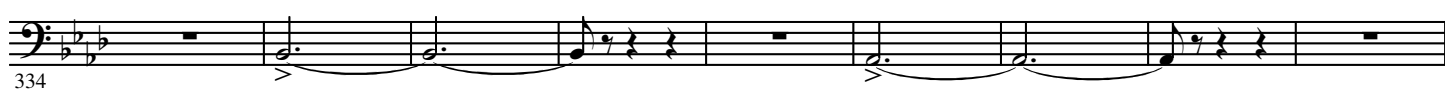
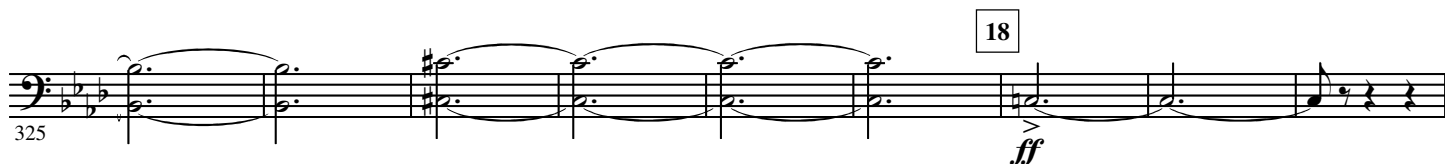
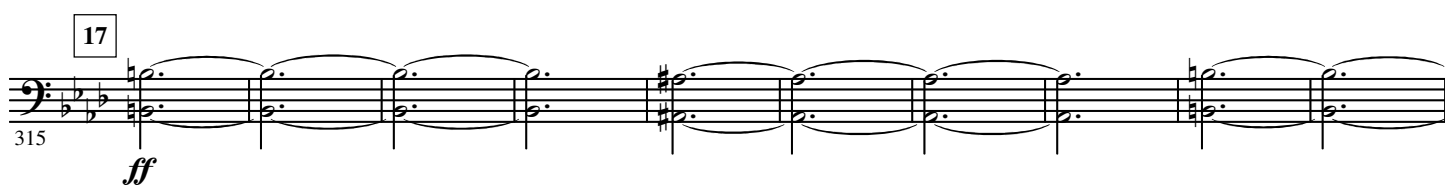
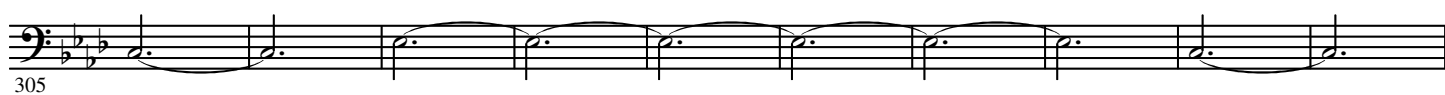
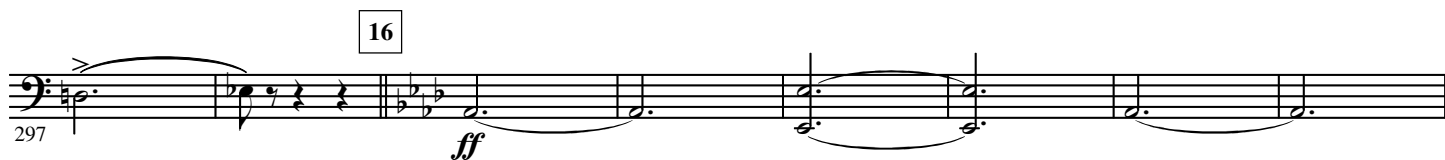
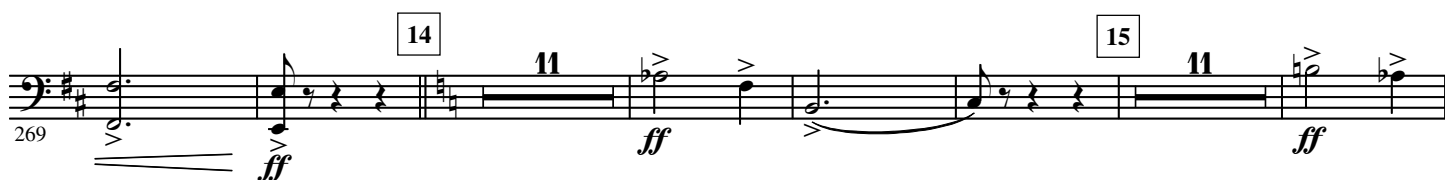
112 *pp*

7

121 *cresc.*



13



352

//

19