

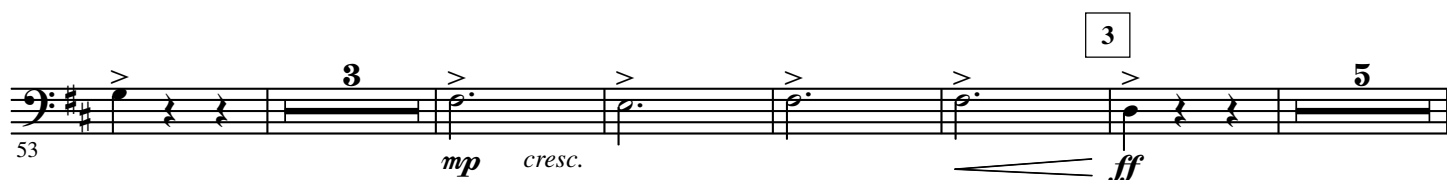
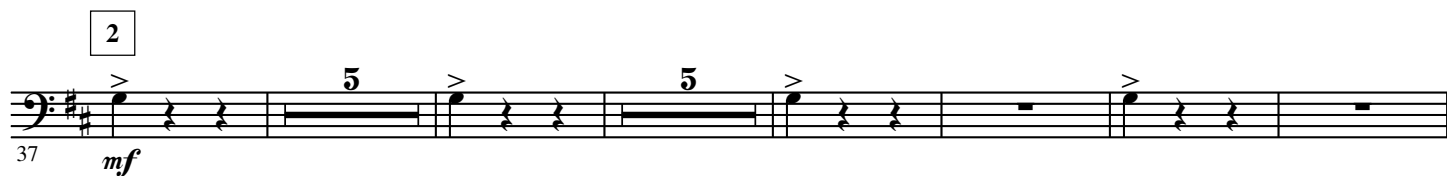
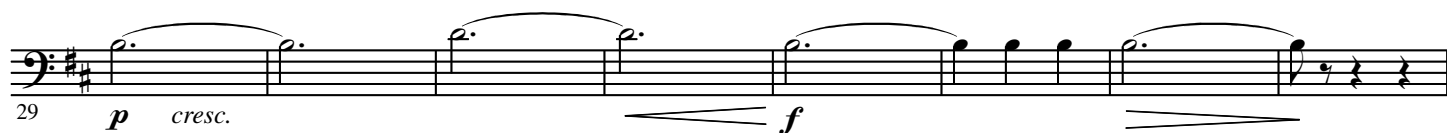
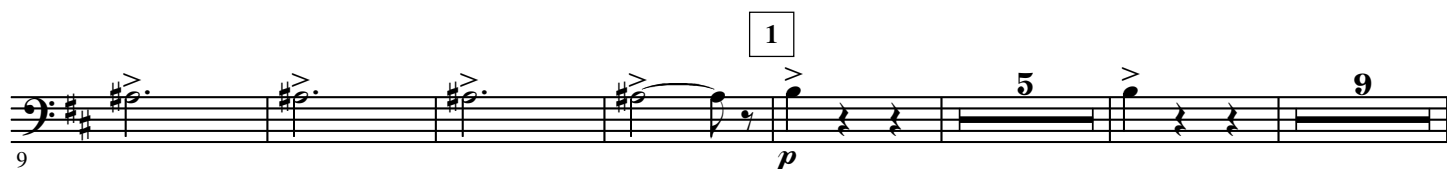
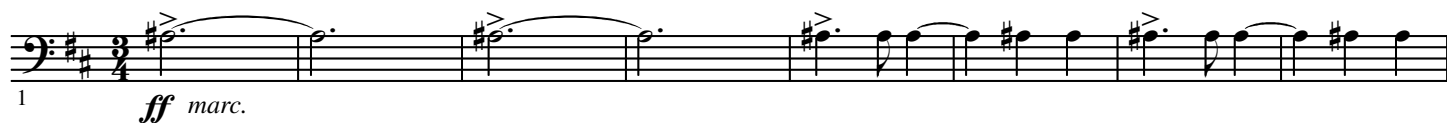
Ouverture pathétique

B \flat Trombone 2

Dmitri KABALEVSKY Op. 64

Arr. José SCHYNS

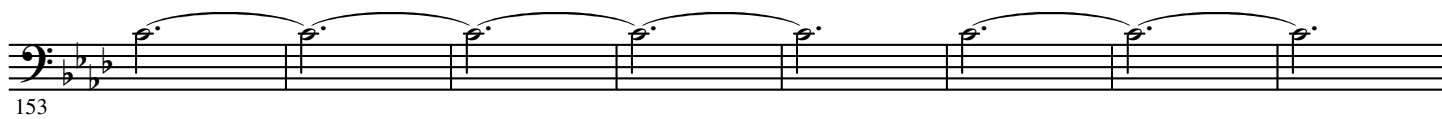
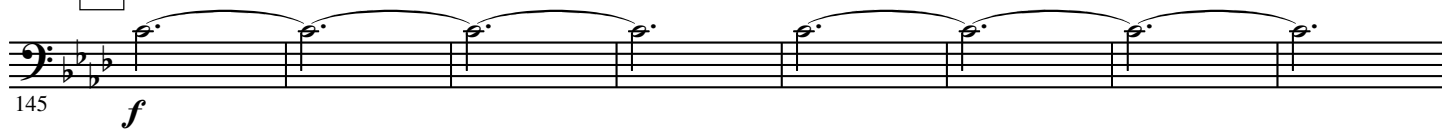
Allegro molto e appassionata $\text{♩} = 108 - 112$



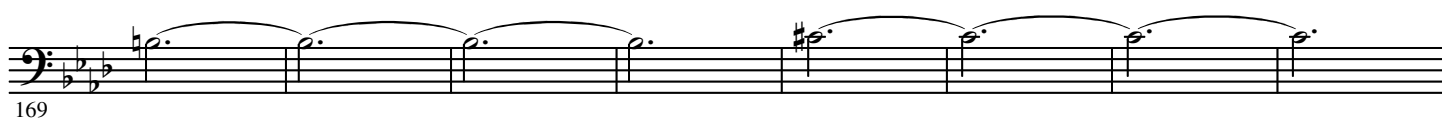
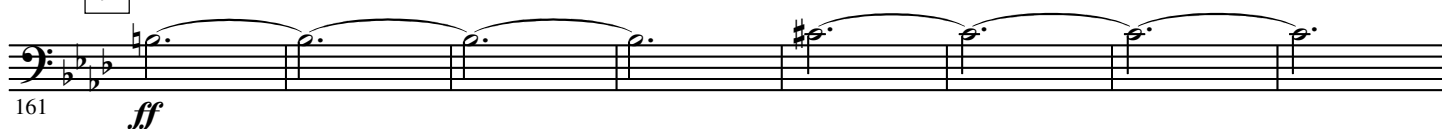
2.

- B \flat Trombone 2-

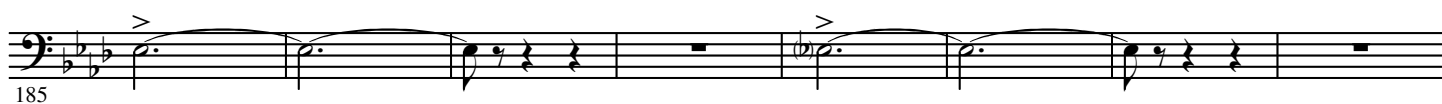
8



9



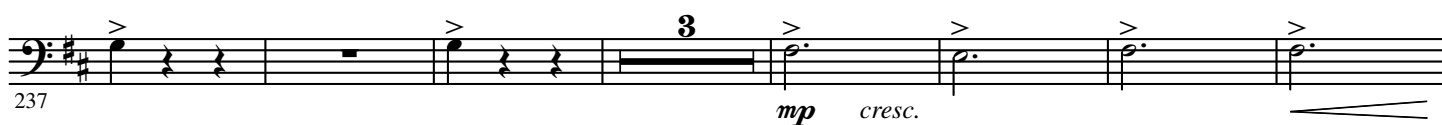
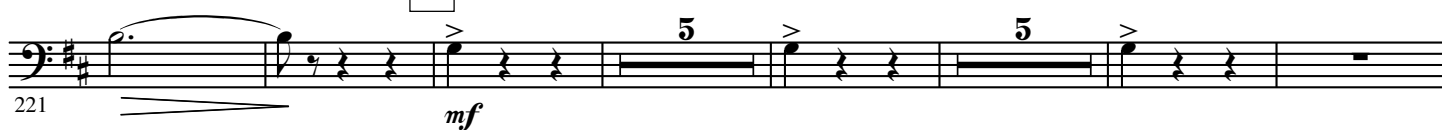
10



11



12



13

247

ff

5 9

14

267

ff

11

15

285

ff

11

16

ff

303

311

17

ff

319

327

18

ff

335

343

350

p

19

5 9

369 *pp* *cresc.* *f*

20 377 *mf* *più f*

391 *marc.*

21 399 *fff*

410 *f* *cresc.* 22

Soli 427 *fff*

437