

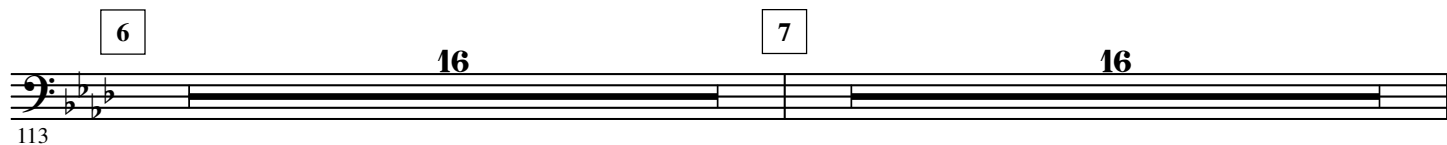
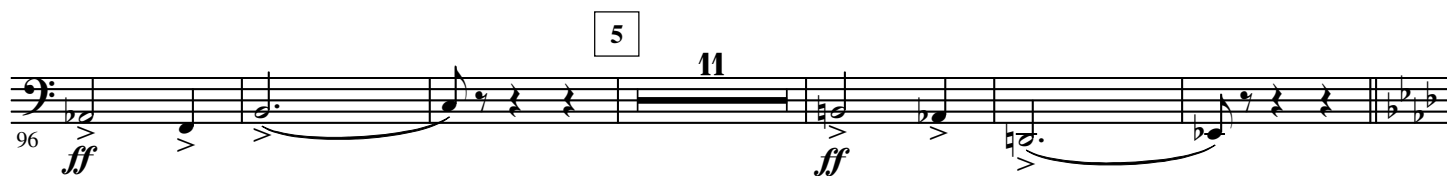
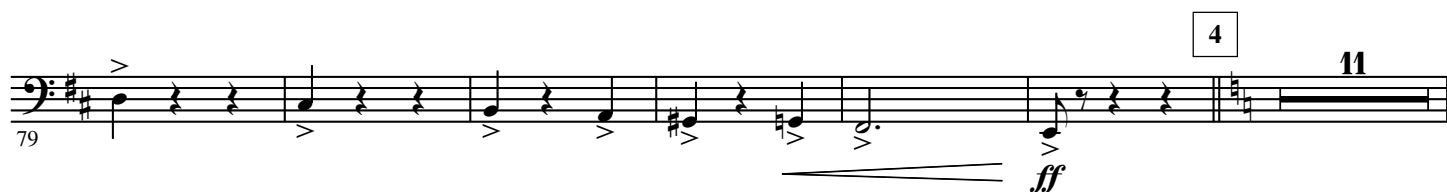
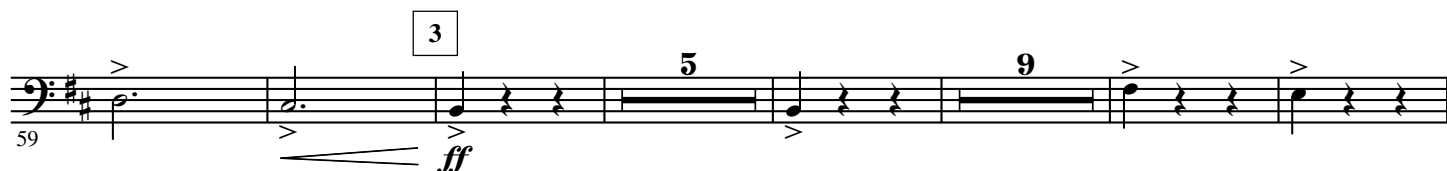
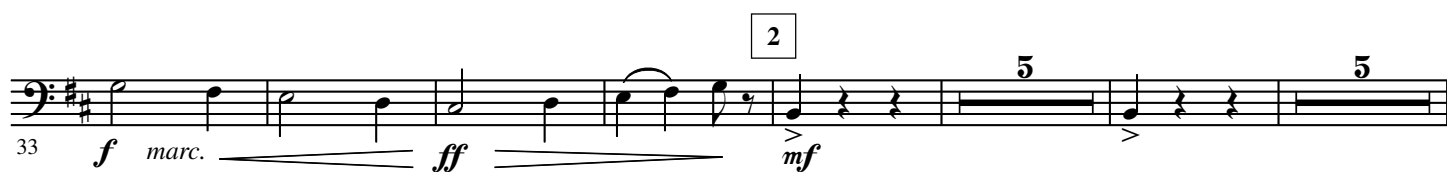
# Ouverture pathétique

B $\flat$  Trombone 3

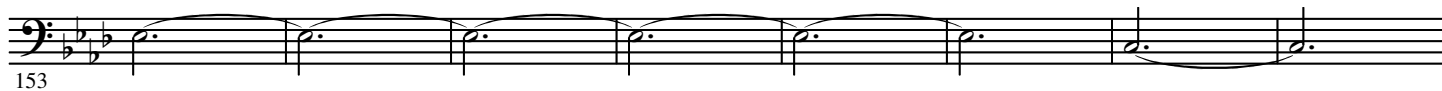
Dmitri KABALEVSKY Op. 64

Arr. José SCHYNS

Allegro molto e appassionata  $\text{♩} = 108 - 112$



8



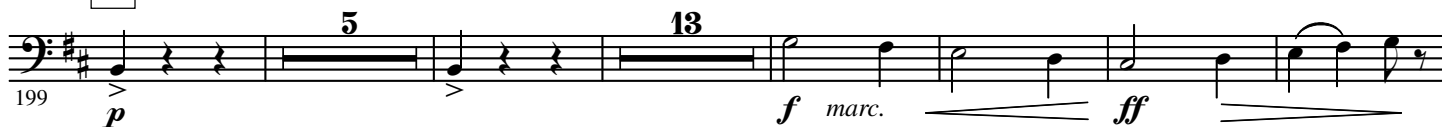
9



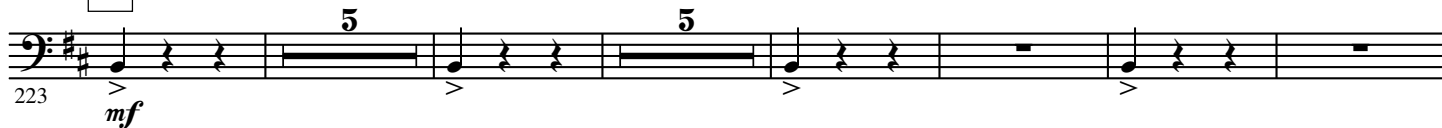
10



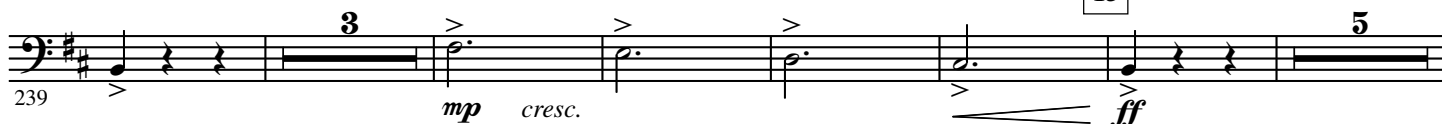
11



12



13



253 **9**

269 **14** **11** **15** **11**

296 **16**

303

311 **17**

319

327 **18**

334

342

350 **19** **5** **13**

373 **f** marc. **ff** **mf** **più f**

20 5

385 **3** marc.

395 **fff**

21

403 **3** **8** **f** cresc.

420 **fff**

22

428

437