

# Ouverture pathétique

E♭ Bass

Dmitri KABALEVSKY Op. 64

Arr. José SCHYNS

Allegro molto e appassionata ♩ = 108 - 112

1

12

*pp*

22

*cresc.*

2

33

*f marc.* *ff* *p*

43

*f*

3

53

*mp cresc.* *ff*

65

76

4

11

5

11

84

*ff* *ff* *ff*

6

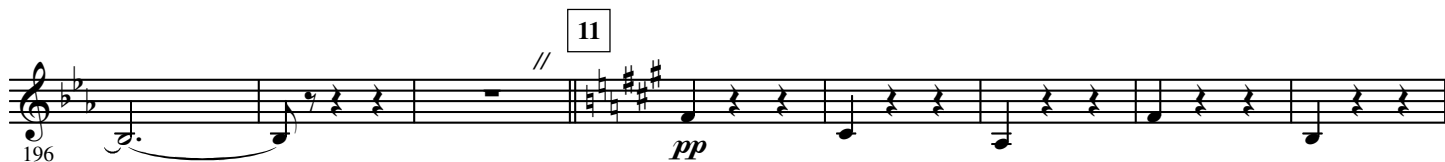
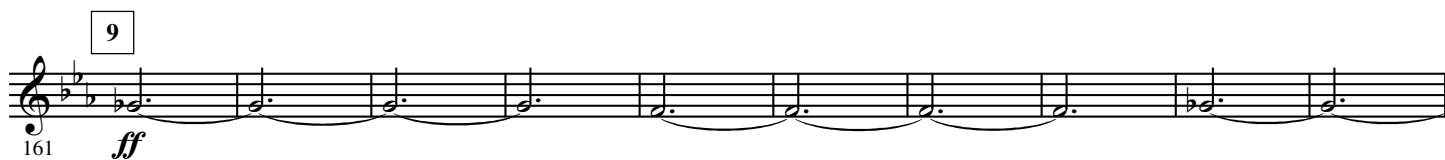
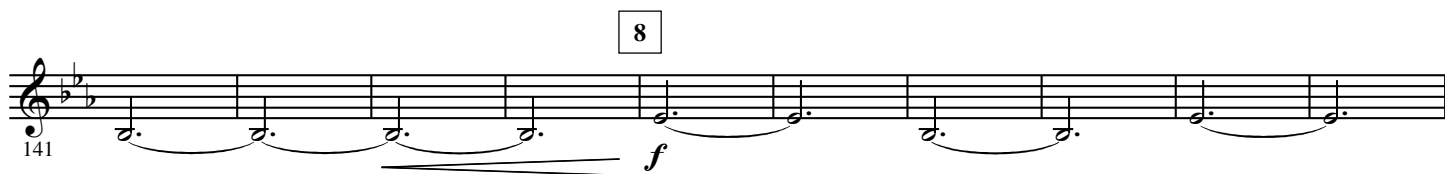
112

*pp*

7

121

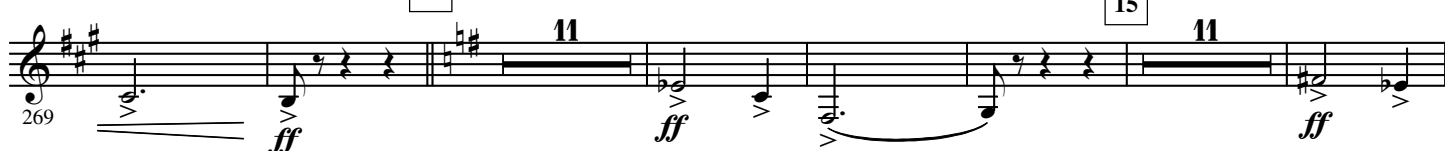
*cresc.*



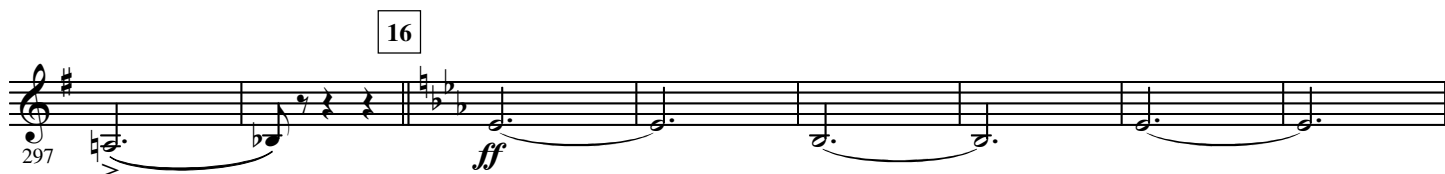
13



14



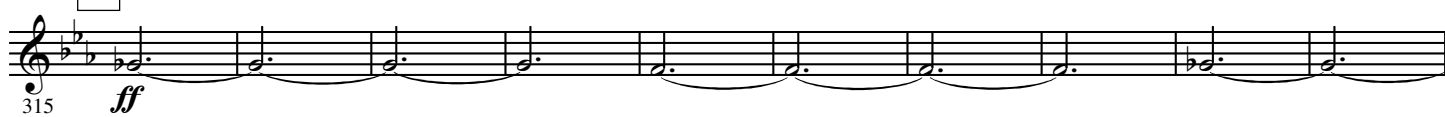
15



16



17



18



19

352

*pp*

360

369

*cresc.*

*f marc.*

*ff*

20

377

*mf*

*più f*

386

*marc.*

21

394

*fff*

402

*f*

22

419

*cresc.*

*fff*

428

437