

Ouverture pathétique

E♭ Horn 2

Dmitri KABALEVSKY Op. 64

Arr. José SCHYNS

Allegro molto e appassionata $\text{♩} = 108 - 112$

1 *ff marc.*

9 *p*

26 *p cresc.* *f*

35 *mf*

44

53 *p cresc.* *f* *ff*

63

72

81 *ff* *ff*

95 *ff*

1 5 5

2 3

4 7

5 7

© see full score

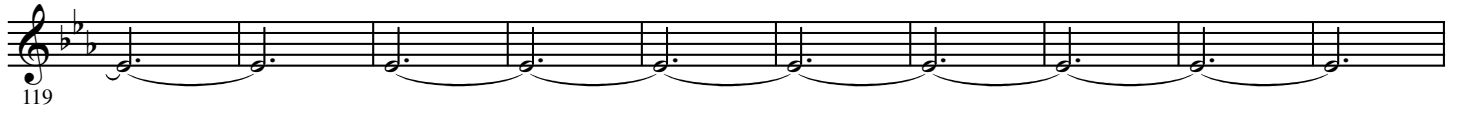
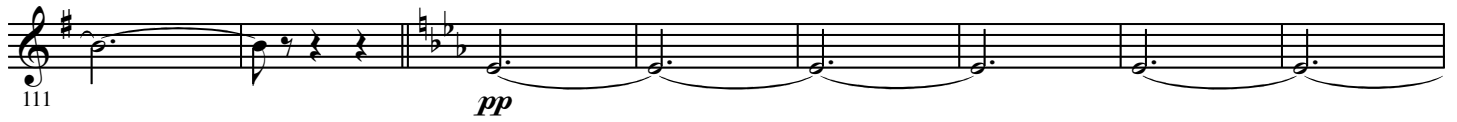
Authorized edition: HAFABRA Music - Louis MARTINUS

www.hafabramusic.com

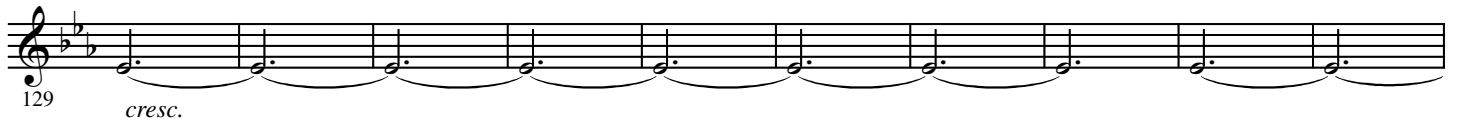
info@hafabramusic.com

All rights reserved
for all countries

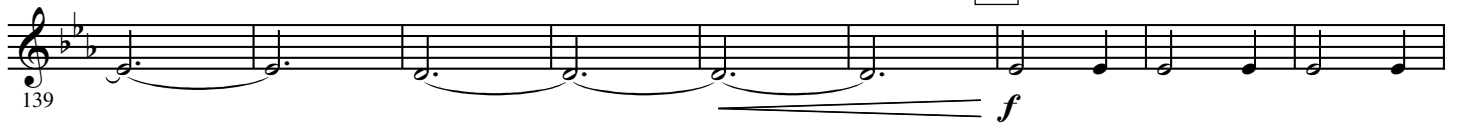
6



7



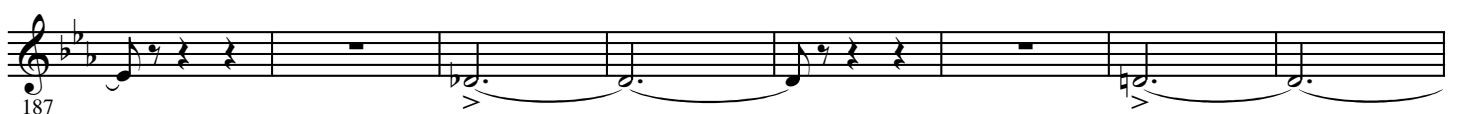
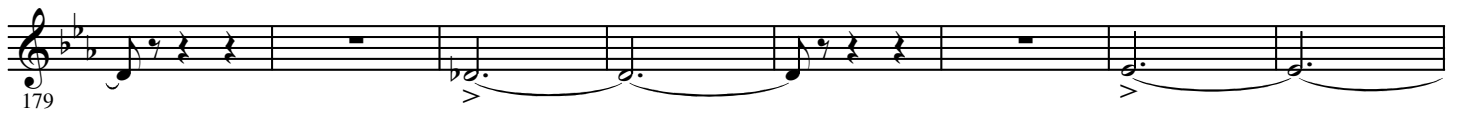
8



9

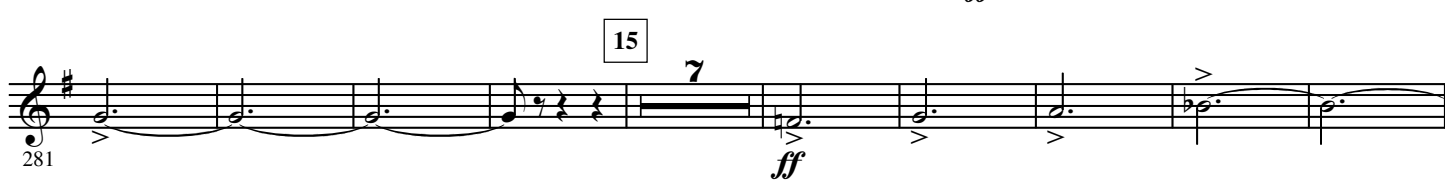
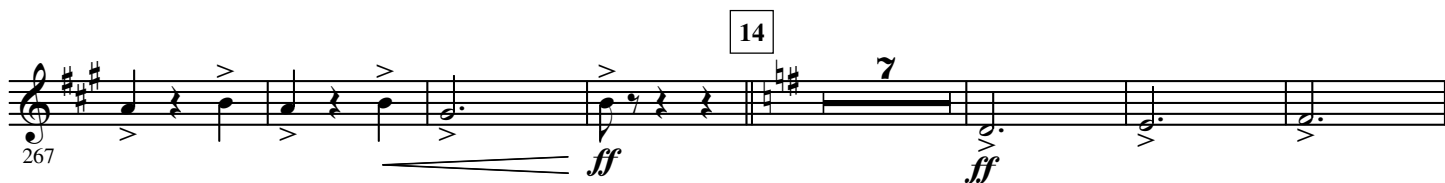
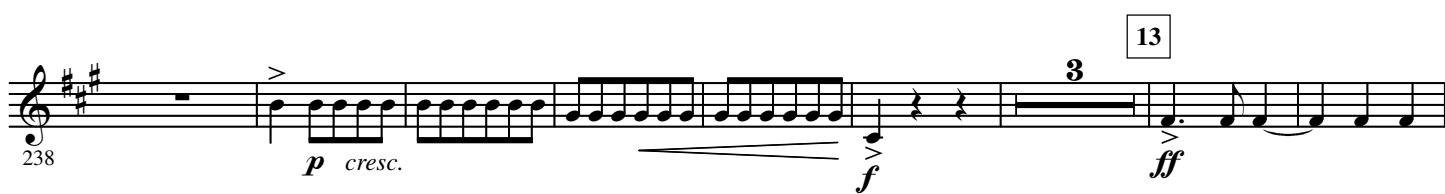
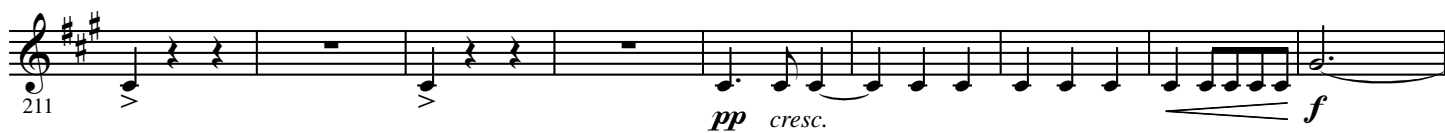


10



11





323

18

331

ff

341

The first staff of music, measures 341-344. It begins with a treble clef, a key signature of two flats (B-flat and E-flat), and a common time signature. The melody starts with a quarter note G4, followed by two eighth notes A4 and B4, then a quarter rest. Measure 342 contains a whole rest. Measure 343 begins with a half note G4, followed by a half note F4, then a quarter note G4, followed by two eighth notes A4 and B4, then a quarter rest. Measure 344 begins with a half note G4, followed by a half note F4, then a quarter note G4, followed by two eighth notes A4 and B4, then a quarter rest. The staff ends with a double bar line.

351

19

5

5

p

368 *pp* *cresc.* *f*

20

377 *mf* *più f*

385 

394 21

fff

428

437

437