

# ESPAÑA

## 3rd E $\flat$ Horn

Emmanuel CHABRIER

Arr. José SCHYNS

**Allegro con fuoco**

4 *f* *mf* 3

14 *sfz* *sfz* *mf* *f* *ff*

23 **A** 31

61 **B** *ff*

69

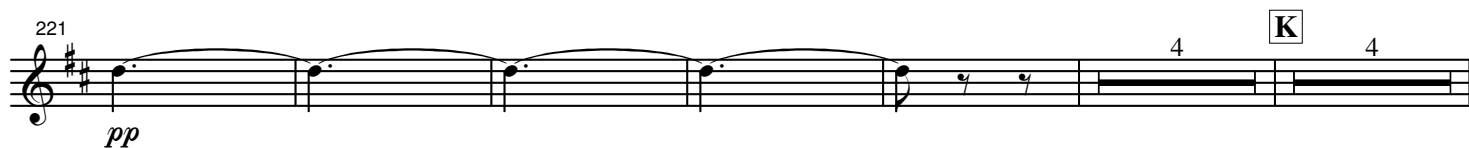
78 **C** 7 *ff* 3

92 **D** 4 *ff* *sfz* 4

106 *ff* *sfz* *mf* *sfz*

114 **E** *p*

124 **F** *p*



269 *f*

276 *ff* **M** 11

293 *pp* *sfz* *p* 8

306 *mf*

314 **N** 4 *ff* *sfz* 4 *ff*

327 *sfz* *mf* *sfz*

334 **P** 8 *p*

349 17 **Q** 3 *p* 2

375 *f* *ff*

382 *f*

Detailed description of the musical score: The score is written for a single melodic line in treble clef, key of D major (two sharps). It consists of nine staves of music. The first staff (269) begins with a forte (*f*) dynamic. The second staff (276) features a fortissimo (*ff*) dynamic and a marking 'M' above a double bar line. The third staff (293) includes piano (*pp*), sforzando (*sfz*), and piano (*p*) dynamics. The fourth staff (306) is marked mezzo-forte (*mf*). The fifth staff (314) contains markings 'N', fortissimo (*ff*), sforzando (*sfz*), and another fortissimo (*ff*). The sixth staff (327) includes sforzando (*sfz*), mezzo-forte (*mf*), and another sforzando (*sfz*). The seventh staff (334) is marked piano (*p*) and contains a marking 'P'. The eighth staff (349) includes a marking 'Q' and piano (*p*) dynamics. The ninth staff (375) features forte (*f*) and fortissimo (*ff*) dynamics. The final staff (382) ends with a forte (*f*) dynamic. The score includes various articulations such as slurs, accents, and dynamic markings like *sfz* and *ff*.

390

[illegible][illegible]

415

*p*

423

*mf*

441

*mf* *f* *mf* 4

451

*f* *ff*

458

4

*tr*

*tr*

*tr*

*tr*

*pp*

467

3

T

16

*f*

487

487 488 489 490 491 492 493 494

*f* *ff*

This musical staff contains measures 487 through 494. It begins with a treble clef and a key signature of two sharps (F# and C#). The first measure (487) starts with a half rest, followed by eighth notes in measures 488 and 489. A crescendo hairpin spans measures 489 and 490. Measure 490 begins with a half note G4 (F#4 in the key signature), which is sustained through measures 491 and 492. Measure 493 contains a half note A4, and measure 494 contains a half note B4. The dynamic markings *f* and *ff* are placed below measures 487 and 490, respectively.

495

495 496 497 498 499 500 501 502

*ff*

This musical staff contains measures 495 through 502. It begins with a treble clef and a key signature of two sharps. Measures 495 and 496 each contain a half note G4 (F#4), which are beamed together. Measures 497 and 498 each contain a half note A4 (G#4), which are also beamed together. Measure 499 begins with a half rest, followed by eighth notes in measures 500 and 501. Measure 502 contains a half note B4. The dynamic marking *ff* is placed below measure 499.

503

503 504 505 506 507 508 509 510

*ff*

This musical staff contains measures 503 through 510. It begins with a treble clef and a key signature of two sharps. Measures 503 and 504 each contain a half note G4 (F#4), which are beamed together. Measures 505 and 506 each contain a half note A4 (G#4), which are also beamed together. Measure 507 contains a half note B4. Measure 508 contains a sixteenth-note triplet of G4, A4, and B4. Measures 509 and 510 each contain a half rest. The dynamic marking *ff* is placed below measure 508.