

**B $\flat$  Bass**

# A World of Harmony

Jean-Pierre HAECK

**Maestoso**  $\text{♩} = 84$

1 *p*  $\text{f}$

8 *mf*  $\text{f}$

**A** **Allegro**  $\text{♩} = 120$

16 *mf*

22

27

**B**

33 *mf*

39

44

**C**

50  $\text{f}$

66

76

Musical notation for the bass line of 'The Rose Tree'. The key signature is one sharp (F#). The notation includes eighth and sixteenth notes, rests, and a double sharp (F##) indicating a key change or modulation. The measure numbers 76 and 77 are indicated below the staff.

83 **Rall.** E ♩ = 104 **Rall. one**

*p* *sf*

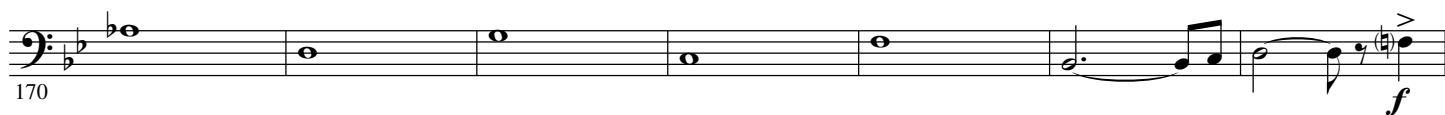
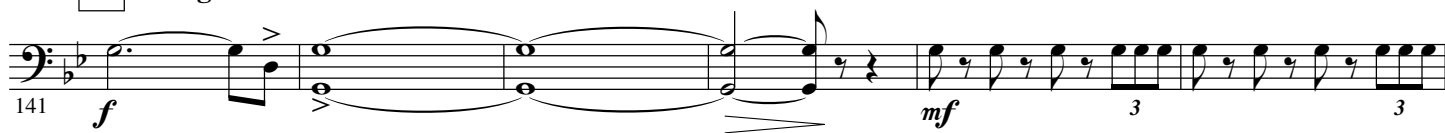
97 **All** **one** **Moderato** ♩ = 78 ***mf*** ***p***

104

[illegible]

129 *mf* **Poco più mosso** **Rall.**

3.

- B $\flat$  Bass -H Allegro  $\text{♩} = 120$ J

[illegible]

192

*mf*

3

3

3

3

K

197

3

3

*mf*

3

**Rall.**

202

**L** **Maestoso** ♩ = 84 **Allegro** ♩ = 126

207 *f*

The musical score for the bass line of 'The Rose Tree' is written on a single staff. It begins with a bass clef and a key signature of one flat (B-flat). The melody consists of a series of eighth notes, starting on G2 and ascending stepwise to G3. The notes are: G2, A2, Bb2, C3, D3, E3, F3, G3. The melody is marked with a forte (*f*) dynamic. The score includes a repeat sign after the first four notes and a final measure with a whole rest. The tempo is marked '213' and the performance instruction is 'p' (piano).

[illegible]